

Historic, archived document

Do not assume content reflects current scientific knowledge, policies, or practices.

62:67
1918

MISS ELLA V. BAINES

The Woman Florist
Springfield, Ohio



SPRINGFIELD, OHIO,
—THE—
FLORAL CENTER
OF THE WORLD.
20 MILLION PLANTS SOLD
EACH YEAR
EVEN—MILION
OF WHICH ARE ROSES.



The Wonderful New Rose
HOOSIER BEAUTY

See First Page For Description and Price

CHAMPION

MATCHLESS

SENSATION

GOOD CHEER

SWEET CLOVE SCENTED
GARDEN SET OF CARNATIONS

See First Page for Description & Prices

THREE BEST HARDY PHLOX

See First Page for Description & Prices.

The Wonderful New Rose Hoosier Beauty

SEE FRONT COVER FOR THIS ROSE IN COLORS

This is the most wonderful of all Red Roses. It is as fragrant as Richmond; in color glowing velvety crimson-scarlet with shades of garnet. This Rose will make its mark as a garden variety. None better. **25 cents; three for 60 cents; two-year plants, 60 cents; two for \$1.00.**

Baines Sweet Clove Scented Garden Set of Carnations

SEE OPPOSITE PAGE FOR THESE CARNATIONS IN COLOR

No. 1 SENSATION—Certainly a grand pink Carnation ever seen, and at the same time the most abundant bloomer. Brilliant dark red, shaded with richest maroon, fringed petals, nearly every flower being on a long stem. This variety surpasses in richness of color the most perfect Jacqueminot Roses. **10 cents.**

No. 2 CHAMPION—This is by far the darkest Carnation ever seen, and at the same time the most abundant bloomer. Brilliant dark red, shaded with richest maroon, fringed petals, nearly every flower being on a long stem. This variety surpasses in richness of color the most perfect Jacqueminot Roses. **10 cents.**

No. 3 GOOD CHEER—One of the most fragrant Carnations we have seen. Color a clear, bright, glowing scarlet; a most continuous bloomer and distinct in color from any other sort offered. Greatly admired by all who have seen it growing here. **10 cents.**

No. 4 MATCHLESS—Largest flowers of the purest immaculate white; large sized blooms. Valuable for garden planting and for pot culture. Very sweetly scented with that delightful old-fashioned clove fragrance. **10 cents.**

Hardy Phlox

SEE OPPOSITE PAGE FOR THESE PHLOX IN COLORS

No. 1 BRIDESMAID—Pure white, clear carmine eye; blooms in large, round heads; attractive. **10 cents.**

No. 2 PANTHEON—Large, clear, deep, bright pink with faint halo; a charming variety. **10 cents.**

No. 3 SIEBOLD—Bright vermilion-red overlaid with orange-scarlet, crimson-red eye; will please everybody. **10 cents.**

The Three Hardy Phlox and the Four Clove Scented Carnations costing 70 cents for only 60 cents.

Baines Garden Set of Gladioli

SEE THIRD PAGE OF COVER FOR THESE GLADIOLI IN COLORS

AMERICA—The flowers are of immense size and of wax-like texture; beautiful lavender-pink. **6 cts.**

ANNIE WIGMAN—Pale cream color with dark blotch; superb. **6 cents.**

AUGUSTA—A beautiful white variety with lavender anthers; opens delicate pink. **6 cents.**

BARON JOSEF HULOT—A deep violet-blue with well opened flowers. Extra. **6 cents.**

MRS. FRANCES KING—A most beautiful "Besnard shade" of flame pink; a magnificent variety. (The border shown on third page of cover is this choice variety.) **6 cents.**

PINK BEAUTY—Rosy-pink with dark blotch; earliest of all Gladioli to bloom. **6 cents.**

SPECIAL—The Six Gladioli as named for 30 cents.

Ten Giant Spencer Sweet Peas

SEE FOURTH COVER PAGE FOR THESE SWEET PEAS IN COLOR

There are no Sweet Peas to compare with the "Giant Spencers." Try them and be pleased. **10 cents a package, or the ten sorts for 75 cents.**

Bargain Offer No. 2 The Hoosier Beauty Rose, the Four Clove Scented Carnations, the Three Hardy Phlox, the Six Garden Gladioli, the ten varieties of "Giant Spencer" Sweet Peas, costing \$2.31, sent for only \$1.75. This is a Great Bargain.

IF YOU WISH QUESTIONS ANSWERED

As to the Growing and Care of Plants, Etc., enclose 10 cents in coin or stamps to cover cost of same.

WHAT OTHERS SAY

State School for Blind,
Bathgate, N. Dak., Sept. 22, 1917.

Dear Madam:—I have ordered from you for several years and have had splendid success.

MRS. B. P. C.

Mound Valley, Kan., Sept. 11, 1917.

I have ordered from you before and have always had such good plants and never lose a single plant. They have such good strong roots. They are in bloom now.

AGNES S.

Pouch Cove, St. John's East, Newfoundland.
Miss Ella V. Baines.

I think it is due to you to say that of all plants purchased by me during the past twenty-five years, none were equal to yours.

MRS. E. G. B.

Robinson, Ill., June 4, 1917.

Ella V. Baines.

Dear Madam:—Am well pleased with the strong two-year plants you shipped me this spring. Have not lost one out of the hundred or more you sent me. I have 250 to 300 Roses, and they have mostly come from you. I wish to thank you for the fine plants sent me in my last order.

E. E. G.

How to Get Your Plants FREE

Make Up Club Orders Among Your Friends and Secure Your Own Plants Free

MAIL CLUBBING RATES

For every dollar you send us to go by mail select 10 cents extra for your trouble—that is, any person sending five dollars select 50 cents extra, and so on.

EXPRESS CLUBBING RATES

For every dollar you send us to go by express select 25 cents extra for your trouble in getting up the order—that is, any person sending ten dollars select \$2.50 extra, and so on.

Remember A Greenhouse at Your Door

We guarantee all plants to reach you safely, by mail, to any postoffice in the United States, at any time of the year.

We Pay the Postage

DO NOT Include Collections or Special Offers

in making up your Clubbing Rates, as the Clubbing Rates here offered apply only to price per single plant, bulb, etc.

Individual Orders Allowed the same discounts as Club Orders. Remember that the premiums or discount must be selected and sent with your order. We cannot send them at separate times unless you add 10 cents to each dollar for postage.

Our List of 50 Cent Bargain Sets

No two alike in these Sets. Do not include these Sets in your order when you select Clubbing Rates. They are net.

	Price		Price
SET 1—Six ever-blooming Roses, six distinct colors.....	50c	SET 17—Six Vines and Plants, suitable for vases and baskets	50c
SET 2—Four Hardy Hybrid Perpetual Roses, four colors.	50c	SET 18—Five new dwarf ever-blooming French Cannas; a great bargain	50c
SET 3—Five new and rare Roses, all distinct.....	50c	SET 19—Six fragrant monthly Carnation Pinks, all colors	50c
SET 4—Two two-year-old Roses, distinct.....	50c	SET 20—Five choice Hibiscus, with their immense, gorgeous colored flowers.....	50c
SET 5—Three ever-blooming, one Polyantha, one Climbing and one Hybrid Perpetual Rose, all fine plants..	50c	SET 21—Four fine hardy Shrubs, all entirely hardy and a splendid collection	50c
SET 6—Five beautiful Roses for winter blooming in the house	50c	SET 22—Six assorted flowering plants, for pot culture....	50c
SET 7—Four elegant Roses, suitable for cemetery planting	50c	SET 23—Twelve choicest, large flowered Pansy plants; will make a fine display.....	50c
SET 8—Five prize winning Chrysanthemums, all different	50c	SET 24—Twelve Pearl Tuberoses Bulbs, bearing the most fragrant of flowers.....	50c
SET 9—Three Dahlias, all different colors.....	50c	SET 25—Fifteen beautiful flowering Gladiolus bulbs.....	50c
SET 10—Three Peonies, Red, White and Pink.....	50c	SET 26—Twelve popular varieties of Flower Seeds. Quite a number of our customers plant only Roses and other plants in their gardens and neglect to use any Flower Seeds. To induce everyone to plant at least a few, we make the above liberal offer of 12 varieties, embracing one packet of each.....	50c
SET 11—Five elegant flowering Geraniums, all colors.....	50c		
SET 12—Four Ferns, all different.....	50c		
SET 13—Six choice flowering Hardy Phlox.....	50c		
SET 14—Ten magnificent Coleus of brightest colors.....	50c		
SET 15—Five lovely flowering Begonias; grand collection.	50c		
SET 16—Twelve pips of the exquisite Lily of the Valley..	50c		

THE CREAM OF THE NEW ROSES

We here offer what is good in the new Tea and Hybrid Tea Roses. To have what is good you must try these Roses. They are the best that England, France, Luxembourg, Germany, Ireland, Italy, Holland and America can produce.

ADMIRAL WARD (H. T.)—Very large, full, globular flowers, freely and continuously produced. Color deep velvety crimson-red, shaded fiery-red. A grand garden Rose. **25 cents; two-year plants, 50c cents.**

AUGUSTUS HARTMANN (H. T.)—Brilliant geranium-red flushed with orange; flowers of large size and beautifully formed. The color is very striking and distinct. It obtained three silver medals in 1913 as "the best bloom in the show." Very fine. **25 cents; two-year plants, 50 cents.**

AUTUMN TINTS (H. T.)—Coppery-red shaded with orange and salmon; flowers produced in great profusion. An exceedingly attractive garden Rose. Similar in color to Mme. Edward Herriott. Very lovely. **25 cents; two-year plants, 50 cents.**

BARON PALM (H. T.)—Pure velvety red, flushed deep yellowish-red and vermillion; large, full, and of good substance; fine both for garden culture and for cut flowers. **25 cents; two-year plants, 50 cents.**

BRILLIANT (H. T.)—Flowers large and full and produced continuously throughout the season in endless profusion. Color the most intense scarlet, the brightest color yet achieved in Roses, the fiery brilliance of which is quite startling. The most brilliant bedding Rose in existence. Gold medal, N. R. S. **25 cents; two-year plants, 50 cents.**

CECILE CUSTERS (H. T.)—Inside of petals lilac-rose, reverse deep rose-pink; large flower carried on long stems; growth vigorous and very floriferous. Extra. **25 cents; two-year-old plants, 50 cents.**

CHAMP WEILAND (H. T.)—This is the new Killarney; said to be a great improvement. **25 cents; two-year plants, 50 cents.**

CHEERFUL (H. T.)—Pure orange-flame, the flame tints overspreading the petals, giving it a wonderful and pleasing effect. Together with the distinct orange-yellow base, creates a combination of color hitherto unknown in Roses. The blooms are very large and full, of perfect shape and form, with enormous petals. It flowers freely and continuously all season. Superb. **25 cents; two-year plants, 50 cents.**

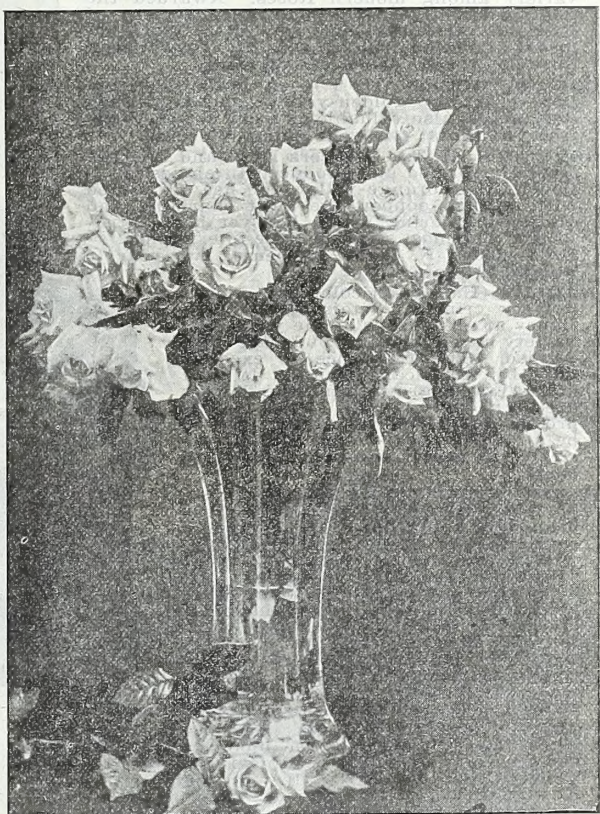
COLLEEN (H. T.)—Brilliant rose, shaded rose-pink with deeper rose-crimson veneering and distinct creamy-yellow ground, never fading until the petals drop. The flower is quite full, with enormous petals and high pointed center, forming the noblest and most remarkable flower among Roses. Very free-blooming and smooth. Gold medal Rose of the National Rose Society of England, 1913. **25 cents; two-year plants, 50 cts.**

COUNTESS CLANWILLIAM (H. T.)—Flowers very large and full, produced in endless abundance; buds long and pointed, opening to large, full, high centered flowers of great beauty and refinement. Color delicate peach-pink at the base of the petals, which are flamed and heavily edged with deep cherry-red, a beautiful contrast of color. A charming Rose. Gold medal, N. R. S. **25 cents; two-year, 50 cents.**

CRIMSON QUEEN (H. T.)—A very strong, upright grower, flower large and full. Color a rich bright velvety crimson. A grand garden Rose, as it is always in bloom. **25 cents; two-year plants, 50 cents.**

EDGAR M. BURNETT (H. T.)—Very large, full flowers of fine shape and form, with large flesh petals tinted rose. Said to be a great improvement on La France, and may be regarded as an advance on the type of Lady Alice Stanley; undoubtedly the sweetest scented Rose in existence. As a garden Rose unequalled. **25 cents; two-year plants, 50 cents.**

ETINCELANTE (H. T.)—Bright brilliant red, shaded with purple, large, full and of fine form, opening into an enormous bouquet of fragrance; bud elongated, of brilliant velvety crimson color, in flower. Extra fine. **35 cents; two-year plants, 70 cents.**



Autumn Tints.

FREIFRAU VONDER GOLTZ (H. T.)—Rosy-salmon, large, full and fragrant. **35 cents; two-year plants, 60 cents.**

FLORENCE FORRESTER (H. T.)—Clear snow-white with a lemon tinge; as the flowers age they become a pure white; the blooms are even larger than Paul Neyron. Its habit is absolutely perfect, and the freedom with which it flowers is marvelous. We consider this Rose the grandest of all whites for bedding. For size and substance has no equal among Hybrid Teas. Is very sweetly perfumed. Gold medal, National Rose Society. **25 cents; two-year plants, 50 cents.**

FRANCIS SCOTT KEY (H. T.)—It is very fitting that such a fine new Rose should be honored with the name of the author of the "Star Spangled Banner," and also that it should hail from Baltimore, one of whose forts was being assailed when the inspiration came to the author to write our national anthem. The flowers are from large to very large, with sixty or more petals opening to a high center. The color is a magnificent deep red rose. Wherever it has been staged this Rose has swept all competitors from the boards and secured every prize it has entered for. Grand for the garden. **25 cents; two-year plants, 50 cents.**

G. AMEEDEE HAMMOND (H. T.)—The color is cadmium or deep apricot egg yolk, shading off to fawn or delicate buff. Blooms large, full, perfectly formed; very floriferous and very fragrant. A great acquisition and a Rose we set great store on. **35 cents; two-year plants, 60 cents.**

THE CREAM OF THE NEW ROSES—Continued.

GOLDEN EMBLEM (H. T.)—It is so perpetual flowering that as a garden and bedding Rose it is without a rival. At its best it surpasses Marechal Niel in shape and formation, and with its wonderful coloring is a most wonderful Rose. The coloring is yellow cadmium toning to sunflower-yellow. Altogether the most striking as well as the most remarkable variety among modern Roses. Awarded the gold medal of the National Rose Society of England, also the American Rose Society's medal at Philadelphia, April, 1917, for the best Rose not yet in commerce. **50 cents.**

GOLDEN MEYER (H. T.)—A most charming Rose of a deep golden-yellow. A fine garden Rose and is also valuable as a cut flower. Very free. **35 cents; two-year plants, 50 cents.**

GORGEOUS (H. T.)—Flowers large and full, exquisitely formed and produced in endless profusion. Deep orange-yellow and heavily veined with reddish copper, the most charming and gorgeous coloring which has yet been introduced. The most striking Rose in existence. Gold medal, N. R. S. **35 cents; two-year plants, 50 cents.**

HADLEY (H. T.)—In color it is a deep velvety crimson, retaining its brilliancy at all seasons of the year. The variety is double and buds are well formed. The fragrance is excelled only by American Beauty. It is a strong, rapid grower, and the flowers are borne on long, stiff stems. It has proven itself under thorough trial to be an all-the-year-round forcing variety. **25 cents; two-year plants, 50 cents.**

HARRY KIRK (T.)—A splendid Rose, of most robust growth, with free-branching habit, flowering freely and continuously; the blooms are large, with large, smooth petals of great substance; the form is perfect, the buds long and elegant. Color, deep sulphur-yellow, passing to a lighter shade at the edges of the petals. Awarded a gold medal by the National Rose Society of England. This Rose is difficult to propagate, and will always, for this reason, remain high in price, although when once rooted and established, is a good grower. **35 cents; two-year plants, 75 cents.**

HELEN TAFT (H. T.)—A rich cerise-pink. Flower very large. A free bloomer and will become as famous as a bedding Rose as is the variety President Taft. Growth very strong. Keep your eye on this variety. **20 cents; two-year plants, 40 cents.**

HERZOG JOHANN ALBRECHT (H. T.)—Coppery-orange on a yellow ground, outer petals changing to clear salmon-rose; large, very full, of fine form, fragrant. Altogether a desirable Rose.

H. F. EILERS—Outer petals carmine-rose; center carmine and slate-blue-red. Buds very long and pointed; flowers large and full with high center.

H. V. MACHIN (H. T.)—A dazzling Rose of gigantic size. Its intensely black grained scarlet-crimson blooms we consider unique amongst all Roses. Awarded gold medal, N. R. S., and several other medals for best bloom. **25c; two-year plants, 50c.**

HOOSIER BEAUTY (H. T.)—New red Rose. Texture like velvet, glowing crimson-scarlet, with darker shadings. **25 cents; two-year plants, 60 cts.**

IMOGEN (H. T.)—Orange-yellow in center, shading towards the edge of petals to pale yellow and creamy-white. A great acquisition to Roses of its color. **35 cents; two year plants, 60 cents.**

JOSEPHINE (H. T.)—Rosy-flesh, base of petals salmon-yellow, large and full, of fine shape; fine both for exhibition and decorative purposes. **25 cents; two-year plants, 50 cents.**

KILLARNEY BRILLIANT—The introducers are to be congratulated sixteen years after the advent of Killarney in giving us this distinct novelty which is undoubtedly the best of the Killarney type. Killarney Brilliant has the same habit of growth and the same freedom of bloom as its parent, while the flower is more double. The color is very brilliant pink and varies like Killarney. In the garden in bright weather is clear pink, and in dull weather almost a crimson. Extra. **20 cents; two-year plants, 40 cents.**



Francis Scott Key. (See description on page 3.)

LADY BOWATER (H. T.)—Creamy-white suffused pale apricot; blooms very large, of conical form, and carried erect. Extra fine. **50 cents; two-year plants, \$1.00.**

LADY GREENALL (H. T.)—Intense saffron-orange, heavily zoned and overspread on deep creamy-white, reflex of petals faintly suffused delicate shell-pink; a truly magnificent Rose. **20 cents; two-year plants, 50 cents.**

LADY PLYMOUTH (Tea)—The color is a pearly, delicate but deep ivory-cream, faintly flushed, giving it a most piquant finish that is difficult to describe. Awarded gold medal National Rose Society of England, and silver medal at Crystal Palace Show, London. **35 cents; two-year plants, 60 cents.**

LOS ANGELES (H. T.)—Los Angeles is, by all odds, one of the finest Roses ever introduced. The growth is very vigorous, and produces a continuous succession of long-stemmed flowers of a luminous flame-pink toned with coral and shaded with translucent gold at the base of the petals. In richness of fragrance it equals in intensity the finest Marechal Niel. The buds are long and pointed and expand into a flower of mammoth proportions, while the beauty of form and ever increasing wealth of color is maintained from the incipient bud until the last petal drops. **35 cents; two-year plants, 60 cents.**

LUCIEN CHAURE (H. T.)—Flesh illuminated with clear rosy-cream; very large, of regular form; free flowering. **25 cents; two-year plants, 50 cents.**

THE CREAM OF THE NEW ROSES—Continued.

MADAME BARDOU JOB (H. T.)—Chrome-yellow and canary citron-yellow, large, full and cupped form. Very free flowering and very distinct. **25 cents; two-year plants, 50 cents.**

MADAME THEODORE DELACOURT (H. T.)—Reddish-salmon shaded clear yellow; large flowers of globular form; a rare color. **25 cents; two-year plants, 50 cents.**

MARGARET DICKSON HAMILL (H. T.)—A magnificent Rose. Its delicate solid maize-straw color with delicate carmine on back of petals make it an outstanding Rose. Gold medal, N. R. S. **35 cents; two-year plants, 50 cents.**

MILDRED GRANT (H. T.)—Ivory-white, with an occasional flush of pale peach. High pointed center, with unusually large and massive petals, opening to perfectly formed flowers of enormous size and substance. Awarded the gold medal of N. R. S. We are the only firm in the United States offering this Rose on its own roots in young plants. It is a grand Rose. **50 cents.**

MRS. ARCHIE GRAY (H. T.)—Flowers large and exquisitely formed and borne in great profusion. Buds long and pointed. Color deep creamy-yellow opening to clear light canary-yellow. Gold medal, N. R. S. **25 cents; two-year plants, 50 cents.**

MRS. CHARLES RUSSELL (H. T.)—This wonderful new American Rose has taken the country by storm. No other forcing Rose except "American Beauty" can compete with it when it comes to counting points. Stems three feet long, stiff and surmounted by grand rosy-pink blooms of the largest size and build. **35 cents; two-year plants, 60 cents.**

MRS. CAMPBELL HALL (Tea)—Delicate creamy-buff, edged or suffused rosy-carmine. The center of the bloom is warm cerise cora fawn. Very deliciously fragrant. Awarded gold medal, N. R. S. **25 cents; two-year plants 50 cents.**

MRS. FRANKLIN DENNISON (H. T.)—Very large, full, well formed flowers. Color porcelain-white, veined primrose-yellow, deepening to ochre at the base of the petals. Strong, vigorous grower, producing its immense flowers in the greatest profusion. **25 cents; two-year plants, 50 cents.**

MRS. FREDERICK W. VANDERBILT (H. T.)—Color, deep orange-red, shaded bronzy apricot-red, quite distinct from other Roses in cultivation. A marvelously attractive variety. The flower is absolutely perfect in shape and form, with petals of wonderful depth and substance, blooming freely throughout the entire season; fine garden Rose. This Rose is regarded by the Rev. Joseph Pemberton as the finest and most useful decorative Rose of the year. When known, this Rose is bound to take the very first place among Roses. Very fragrant. Gold medal, N. R. S. **25 cents; two-year plants, 50 cents.**

MRS. GEORGE GORDON (H. T.)—Produces its flowers in the greatest profusion. Very large and full. Exquisitely formed with high pointed center. Bright rosy-pink, flushed silvery-pink at edges of petals, base of petals yellowish-pink. Extra. **25 cents; two-year plants, 50 cents.**

MRS. GEORGE NORWOOD (H. T.)—Bright rich pink, beautifully veined with a tint of yellow at the base. Large flowers of splendid lasting qualities. Highly perfumed. **25 cents; two-year plants, 50 cents.**

MRS. HUGH DICKSON (H. T.)—A grand Rose for any purpose. Deep cream with a heavy suffusion of orange and apricot, delightful perfume, one of the most beautiful and useful Roses. S. G. medal, N. R. S. **35 cents; two-year plants, 60 cents.**

MRS. JAMES LYNAS (H. T.)—Flowers very large and full, produced freely and continuously. Color pearly-pink at the base of the petals, flushed delicate rose, rosy-peach at the edges and on the reverse of petals. One of the most valuable garden Roses of recent years. Par excellence. Gold medal, N. R. S. **25 cents; two-year plants, 50 cents.**

MRS. MACKELLAR (H. T.)—The glorious blooms make this an imposing Rose. A deep citron or delicate pure canary color. As the large blooms gracefully expand the guard petals charmingly reflex and become pearly primrose-white of great decorative beauty. Award of merit (unanimous), R. H. S., London. **25 cents; two-year plants, 50 cents.**

MRS. MOOREFIELD STOREY (H. T.)—Has a strong, upright growth, the wood being stout and smooth, with large, handsome foliage, practically proof against mildew and black spot. The flowers are freely produced, of good size and substance, opening readily. Color, shell-pink, deepening towards the center and tipped deep rose; of the same general type as Mrs. Charles Russell, while absolutely distinct. **25 cents; two-year plants, 50 cents.**

MRS. SARAH YEATS (H. T.)—The color is a new and brilliant red. The petals are very large for a Rose and of splendid texture. Mrs. Sarah Yeats is not an experimental Rose, but one that has been successfully produced under ordinary greenhouse conditions. Stems run eighteen to forty-two inches long without pinching. It holds up longer after being cut than any of the red Roses. **35 cents; two-year plants, 60 cents.**

MRS. S. T. WRIGHT (Tea)—A delightful Rose, a sport from that prime favorite, "Harry Kirk." The guard petals are delicate cadmium old gold; the center petals have a delicate and charming suffusion of delightful, pure rose-pink on cadmium orange-chrome. A very intense silk finished apricot. Has a deliciously pervading hybrid-persian perfume. **25 cents; two-year plants, 50 cents.**

NATIONAL EMBLEM (H. T.)—Dark crimson of perfect shape, habit and inflorescence; as a bedding, massing and cutting Rose it is unique. Buds long and pointed, opening to large, full, handsome flowers of great beauty, flowering freely and continuously. **25 cents; two-year plants, 50 cents.**



Ophelia. (See description on page 6.)

THE CREAM OF THE NEW ROSES—Concluded.

NERISSA (H. T.)—This Rose was given an award of merit from the Royal Horticultural Society of England. Why they did not give it a gold medal is beyond our ken. An enormously large, full flower, of fine shape, making a magnificent effect in the garden. Growth vigorous. This is a great Rose. **20 cents; two-year plants, 50 cents.**

OLD GOLD (H. T.)—Vivid reddish-orange with rich coppery-red and apricot shadings. A true old gold color which is a unique color amongst Roses. A continuous free bloomer. Very sweetly fragrant. Gold medal, National Rose Society. **25 cents; two-year plants, 50 cents.**

OPHELIA (H. T.)—This without question is the greatest all-round garden Rose of this century; a lovely salmon-flesh color overlaid with a blush tint. Don't by any means neglect to order this charming Rose. **25 cents; two-year plants, 50 cents.**

PINK OPHELIA (H. T.)—Here we have the long-sought-for ideal pink forcing Rose. It is identical with Ophelia, except that it is a beautiful, bright, clear pink. Everybody will want it. **35 cents; two-year plants, 60 cents.**

QUEEN MARY (H. T.)—A uniquely beautiful Rose which enthuses the hearts of all who see it and ever holds them in its lovely sway. Its pure, rich colorings, which are zoned deep, bright canary-yellow, on plenteous well-shaped petals which are craved with pure deep carmine. This extra touch of color gives a gloriously warm effect as the yellow and carmine do not commingle; the petals are arranged in tip-tilted globular formation. It is most floriferous, and fragrantly primrose-tea perfumed. Awarded silver cup Festival of the Empire, Crystal Palace, London, and silver gilt medal, N. R. S. **25 cents; two-year plants, 50 cents.**

RED LETTER DAY (H. T.)—An exceedingly beautiful Rose of infinite grace and charm. Its velvety, brilliant, glowing scarlet-crimson buds and fully opened cactus-like flowers never fade, as the reflex of the petals is satiny crimson-scarlet. Awarded S. G. medal, N. R. S. This is by far the best growing and freest blooming of all the Hybrid Tea Roses. Be sure and try it. **25 cents; two-year plants, 50 cents.**

RED RADIANCE (H. T.)—All who know that grand Rose Radiance will welcome this red form of that great favorite. Radiance is a Rose that does well everywhere, a fine grower and free bloomer, and no prettier pink Rose grown. Red Radiance is its exact counterpart except that the color is a rich deep red. **25 cents; two-year plants, 50 cts.**

ROSITA MAURI (H. T.)—Pure deep rose-pink, large, full, sweetly scented. Elongated bud. Extra. **25 cents; two-year plants, 50 cents.**

SALLIE (H. T.)—The flowers are large and full, outer petals creamy-flesh, gradually deepening towards the center of the bloom, with splashes of rich yolk or egg color. Awarded first prize at the International Show, Chelsea. **25 cents; two-year plants, 50 cents.**

SOUVENIR OF HENRY GRAHAM (H. T.)—A delightful imposing house Rose, faintly or charmingly blushed carmine on pearly-cream or delicate buff-white; deliciously and strongly tea scented. A very profuse bloomer. Its lovely colorings and size lend it much merit. **35 cents; two-year plants, 60 cents.**

TOTALE GELOS (H. T.)—A very vigorous grower of erect branching habit. Long bud borne on stout stem; large, full, globular flower, flesh-white color shaded with chrome-yellow in the center at the autumn blooming. **25 cents; two-year plants, 50 cents.**

WALTHAM SCARLET (H. T.)—Crimson-scarlet, single, very large for a single Rose, and produced with great freedom. Forms handsome bushes. **35 cents; two-year plants, 60 cents.**

WARRIOR (H. T.)—Buds blood red; when fully expanded, vivid scarlet. **25 cents; two-year plants, 50 cents.**

WHITE SHAWYER (H. T.)—This is a sport from that grand forcing Rose, Mrs. George Shawyer, and like its parent is a glorious forcer. Indeed, some growers claim that it will supersede all the white forcing Roses. Snow-white, of the largest size, and a good keeper. It is a good garden Rose, being a strong, vigorous grower and free bloomer. Don't forget White Shawyer when making up your planting list. **35 cents; two-year plants, 50 cents.**

The "Excelsior" List of Ever-Blooming Roses

New and Choice for Outdoor Planting or House Culture

Price, 12 cents each; any five of your own selection for 50 cents; any twelve for \$1.00. If you leave the selection of the varieties to us, we will send six for 50 cents, or thirteen for \$1.00. Large-two-year-old Roses from this list, 35 cents each, or four for \$1.10.

For general planting, more especially in open ground, this class excels all others. One-year-old plants, such as we send by mail, bloom the first and each succeeding year from early spring until severe frosts. Two-year-old plants, of course, yield a greater profusion of flowers, owing to their size. The flowers are noted for their exquisite coloring and delightful fragrance; hardy everywhere in open ground with protection of litter, leaves, evergreen boughs or similar materials. Plant liberally of one-year-old Roses; the harvest of bloom they give the first year compensates for the trifling outlay. Anyone can succeed with them.

"EXCELSIOR" LIST OF ROSES OF SPECIAL MERIT

In Ordering Say "From 'Excelsior' List"

AGRIPPINA—Bright red; very free bloomer.

ALEXANDER HILL GRAY—Largest pure yellow; extra.

ANTOINE VERDIER—Bright glowing pink; very free bloomer.

ARCHDUKE CHARLES—Deep carmine, reverse silvery-pink.

AURORA—Bright pink; very double and sweet; fine garden Rose.

BEAUTY OF STAPLEFORD—Bright, rich rosy-crimson.

BETTY—Coppery-rose; flushed golden-yellow; glorious form.

BLUMENSCHMIDT—Rich lemon-yellow, often tinged pink.

BRITISH QUEEN—Blush, changing to pure white.

BURBANK—Bright pink; a grand bedder; always in bloom.

CARDINAL—Rich, cardinal-red; full and very free.

CATHERINE MERMET—Color a clear rosy-pink; large and fine.

CHAMPION OF THE WORLD—Rich, deep, rosy-pink; extra fine.

CHATEAU DES CLOS VOUGEAT—Blackish-crimson; elegant.

CHERRY RIPE—A deep, rich cherry-red. A No. 1.

CHRISSE MACKELLAR—Crimson-carmine and orange-pink.

CLARA WATSON—Salmon-pink; a grand variety.

CLOTHILDE SOUPERT—Everybody's favorite light pink Rose.

COLONEL R. S. WILLIAMSON—Satiny-white, with deep blush center.

THE "EXCELSIOR" LIST OF EVER-BLOOMING ROSES—Continued.

COQUETTE DE LYON (Yellow Hermosa)—Pure light yellow.

CORNELIA COOK—The old favorite white Rose; none better.

COUNTESS OF DERBY—Center salmon, shading to delicate pink.

COUNTESS OF GOSFORD—Clear salmon-pink and saffron-yellow.

DEAN HOLE—Light carmine, shaded salmon; extra fine.

DEVONIENSIS—Magnolia fragrance; a delicate creamy-white.

DORA—Peach blossom color; glorious.

DORA HANSEN—Satiny salmon-rose. Extra.

DOROTHY PAGE ROBERTS—Coppery-pink and apricot.

DOUBLE PINK KILLARNEY—Same as Killarney, only more petals.

DOUBLE WHITE KILLARNEY—This Rose is more double than White Killarney.

DR. GRILL—Coppery nasturtium-yellow, tinged with red.

DUCHESS DE BRABANT—Bright salmon-pink; an old favorite.

DUCHESS OF ALBANY (Red La France)—A superb Rose.

DUCHESS OF WELLINGTON—Intense saffron-yellow; stained red.

ECARLATE—The finest red bedding Rose to date.

EDITH PART—Rich red suffused deep salmon.

EDWARD MAWLEY—The finest of all dark crimson Roses.

EMPRESS EUGENIE—Deep, rich pink; very double; hardy.

EUGENE BOULLET—Deep crimson and carmine.

EUGENE E. MARLIT—Rich bright carmine with scarlet tones.

FARBENKONIGIN (Queen of Colors)—Rosy-carmine.

FERNIEHURST—Beautiful fawn and coppery-pink.

FLORENCE HASWELL VEITCH—Brilliant scarlet shaded black.

FLORENCE PEMBERTON—Creamy-white, flushed and shaded.

FRANCES CHARTERIS SETON—A magnificent red Rose.

FRAU MARGRETHE MOLLER—Dark rose, lighter on edge of petals; very large, very full.

FRAU MATH. NOEHL—Lemon-yellow; large, full, fine form; fragrant.

FREDA—A beautiful old-rose color. Grand.

FRIEHRER VON MARSCHALL—A grand, large, bright carmine-rose.

FRIEDRICHSRUHE—Deep blood-red; fine odor.

F. R. PATZER—Creamy-buff, reverse delicate pink; extra fine.

GENERAL McARTHUR—A superb, deep, rich red Rose; new.

GENERAL ROBT. E. LEE—Orange-yellow, shaded white; free.

GENERAL SUPERIOR ARNOLD JANSSEN—Glowing carmine. Extra.

GENERAL TARTAS—Color rich, deep rose; very fine.

GOLDEN GATE—White; most beautifully tinged pink.

GROSSHERZOGIN ALEXANDRIA—Clear canary-yellow; fine.

GROSSHERZOGIN FRIEDRICH—Bright rosy-vermilion; extra.

GRUSS AN TEPLITZ—Brightest red of all Roses; extra.

HELENE WATTINE—White with lemon-yellow center.

HERMOSA—Beautiful bright pink flowers; old favorite.

HERZOGIN MARIE ANTOINETTE—Pure orange or old gold.

HUGO ROLLER—Rich lemon-yellow, suffused crimson.

IRISH FIREFLAME—Old gold or coppery-yellow.

IVORY—Pure snow-white; very pretty bud.

JOHANNES WESELHOFT—A grand yellow Rose.

JONKHEER J. L. MOCK—Clear, imperial-pink; superb.

JOSEPH HILL—Salmon-pink shaded with yellow.

KILLARNEY—Clear rich deep shell-pink; a great beauty.

KILLARNEY QUEEN—A cerise-pink; has no equal.

LA DETROIT—Shell-pink, shading to rose; elegant.

LADY ALICE STANLEY—Bright rosy-flesh; reverse deep coral-red.

LADY ASHTOWN—Deep rose, shading to silvery-pink.

LADY BATTERSEA—Long pointed buds of richest red; elegant.

LADY DE BATH—Creamy-white and golden-yellow; extra.

LADY DUNLEATH—Deep ivory and golden-yellow.

LADY HILLINGDON—Deep golden-yellow; superb.

LADY KATHERINE ROSE—A lovely shade of bright pink.

LADY MARY CORRY—Deep yellow; distinct and fine.

LADY MARY WARD—Orange with metallic flush.

LADY PIRRIE—Reddish-salmon and apricot; fancy.

LADY ROBERTS—Rich apricot, base of petals coppery-yellow.

LADY URSULA—Flesh-pink; large, full and perfectly formed.

LA TOSCA—Soft pink, tinted rosy-white; extra.

LAURENT CARLE—Deep rosy-carmine; extra fine.

LE PACTOLE—Pale sulphur-yellow; free.

LE PROGRES—Nankeen-yellow, golden-yellow buds.

LOUIS PHILIPPE—Dark crimson-maroon; good bedder.

MABEL DREW—Deep cream and canary-yellow.

MADAME ABEL CHATENAY—Rosy-pink, with lighter shadings.

MADAME CAMILLE—A remarkable shade of salmon; large.

MADAME CAROLINE TESTOUT—A grand bright pink; extra large.

MADAME CHARLES LUTAUD—Rich chrome-yellow.

MADAME CONSTANT SOUPERT—Deep yellow, shaded peach.

MADAME DE VATRY (Creole Beauty)—A fine red.

MADAME DE WATTEVILLE—Rosy-blush, bordered crimson.

MADAME EDMOND ROSTAND—Clear pink, orange center.

MADAME HOSTE—Pale lemon-yellow, deeper center.

MADAME JENNY GILLEMOT—Saffron-yellow, opening pale yellow.

MADAME JOSEPH SCHWARTZ—White, delicately tinged pink.

MADAME JULES BOCHE—White, suffused salmon-pink.

MADAME JULES GROLEZ—Rose and satiny-pink; extra.

MADAME LEON PAIN—Silvery-salmon; center yellowish-orange.

MADAME LOMBARD—Rosy-red, with silvery reflex; extra fine.

MADAME LUCIEN BALTET—Rosy-flesh, shaded yellow.

MADAME MELANIE SOUPERT—Saffron-yellow, suffused carmine.

MADAME PAUL EULER—The famous pink Prima Donna Rose.

MADAME PERNET DUCHER—Called the yellow President Carnot.

MADAME RAVARY—Beautiful golden-yellow.

MADAME SCHWALLER—Deep pink; deliciously fragrant; hardy.

MADAME SEGOND WEBER—A beautiful grand deep pink.

MADAME VALIERE BEAUMEZ—Cream, yellow and orange color.

MADAME WELCHE—Amber-yellow, flushed with crimson.

THE "EXCELSIOR" LIST OF EVER-BLOOMING ROSES—Concluded.

- MADemoiselle BLANCHE MARTIGNOT**—Beautiful peach-pink.
- MADemoiselle CECILE BERTHOD**—Deep rich golden-yellow.
- MADemoiselle FRANZISCA KRUGER**—Deep coppery-yellow.
- MADemoiselle HELENE CAMBIER**—Coppery-yellow; deep center.
- MADISON**—Pure white, exquisite.
- MAGNAFRANO**—Magnificent buds of crimson-scarlet.
- MAGNOLIA**—Deep orange-yellow and lemon, shaded white.
- MAMAN LYLY**—Delicate rosy-flesh; very fine.
- MARCELLA**—Buds buff; flowers salmon-flesh.
- MARGARET**—Clear, delicate soft pink color. Extra.
- MARGUERITE MONTAVON**—Bright china rose; free bloomer.
- MARIE ADELAIDE (Grand Duchess of Luxembourg)**—Deep orange-yellow. Extra.
- MARIE DELESALLE**—Color bright deep cerise. Glorious.
- MARIE GUILLOT**—The old standby for a pure white Rose.
- MARIE VAN HOUTTE**—Straw-yellow flushed with crimson.
- MARY COUNTESS OF ILCHESTER**—Color warm crimson-carmine.
- MELODY**—Color pure deep saffron-yellow. Extra.
- METEOR**—A grand rich dark crimson; superfine.
- MISS ALICE DE ROTHSCHILD**—Rich deep citron-yellow.
- MISS CYNTHIA FORDE**—Deep brilliant rose-pink.
- MOLLY SHARMAN CRAWFORD**—Pure dazzling white.
- MONSIEUR R. ARNAUD**—Deep pink shaded yellow and crab-red.
- MOSELLA**—Center chrome-yellow; edges creamy-white.
- MRS. AARON WARD**—Golden-orange, distinct and beautiful.
- MRS. ANDREW CARNEGIE**—Pale lemon-yellow shaded white.
- MRS. ARTHUR E. COXHEAD**—Claret-red, shaded vermilion.
- MRS. A. R. WADDELL**—Clear deep salmon.
- MRS. BENJAMIN R. CANT**—Deep, dark carmine; extra.
- MRS. CHARLES E. PEARSON**—A glorious orange-yellow.
- MRS. CORNWALLIS WEST**—A clear shell-pink; beautiful.
- MRS. DAVID JARDINE**—Bright rosy-pink, shaded salmon.
- MRS. DEGRAW**—Bright coral-pink; fine bedder.
- MRS. EDWARD ALFORD**—Silvery-pink; beautiful.
- MRS. FOLEY HOBBS**—Ivory-white, tinged delicate pink.
- MRS. FRANK BRAY**—Deep rich coppery-ecru.
- MRS. FREDERICK W. VANDERBILT**—Deep orange-red. Gold medal.
- MRS. GEORGE SHAWYER**—Bright peach-pink; superb.
- MRS. HERBERT STEVENS**—White, with fawn shading.
- MRS. MUIR MACKEAN**—Bright carmine-crimson.
- MRS. R. D. McCLURE**—Brilliant glistening salmon-pink.
- MRS. ROBERT GARRETT**—A grand deep pink with long bud.
- MRS. T. HILLAS**—Deep chrome-yellow.
- MRS. WALTER EASLEA**—Glowing crimson-carmine.
- MRS. WALTER E. MARTIN**—Clear bright pink and blush-white.
- MY MARYLAND**—Clear, glowing pink; extra.
- NATALIE BOTTNER**—Delicate creamy-yellow.
- NIPHETOS**—Pure white; very long bud.
- OLIVIA**—Bright red; a grand garden Rose.
- OPHELIA**—Salmon-flesh; a grand Rose.
- OTHELLO**—Deep blackish-crimson; maroon shades
- PEERLESS**—Pure white, with pale flesh center.
- PERLE DES JARDINS**—Clear golden-yellow; very rich.
- PERLE VON GODESBERG**—Pure white, yellow center.
- PHARISAER**—Rosy-white, shaded salmon; fine.
- PIERRE GUILLOT**—Enormous, rich crimson blooms; none finer.
- PRESIDENT TAFT**—Shining, intense deep pink.
- PRIMROSE**—Yellow with apricot shadings.
- PRINCE DE BULGARIA**—Coppery-yellow, golden center; extra.
- PRINCE E. C. d'ARENBERG**—Clear lively red; extra.
- PRINCESS SAGAN**—The color is a rich velvety crimson; free.
- PRINCIPAL A. H. PIRRIE**—Silvery-pink with salmon tints.
- QUEEN BEATRICE**—The finest of bright pink Roses.
- QUEEN MARY**—Canary-yellow, crayoned carmine.
- QUEEN OF SPAIN**—Delicate flesh, deeper center. Extra.
- RADIANCE**—A brilliant rosy-carmine. Extra.
- RAGGED ROBIN**—So called in California; light red, very sweet.
- RAINBOW**—Blotched and streaked pink and crimson.
- RECUERDO DE ANTONIO PELUFFO**—Salmon-white, with edging of yellow; extra fine.
- RENA ROBBINS**—Clear yellow, changing to white, with a golden-yellow head. Beautiful.
- RHEA REID**—Richest deep crimson; fine for garden.
- RICHMOND**—Pure bright scarlet-red.
- ROBIN HOOD**—A glorious scarlet-red rose; superb.
- ROSE GUBERT**—Canary-yellow, deepening at the center.
- ROSEMARY**—A beautiful Rose of shining silvery-pink.
- SENATEUR MASCURAND**—Deep orange-yellow.
- SNOWFLAKE**—Snow-white; most profuse bloomer of all Roses.
- SOMBREUIL**—Pure white, tinged delicate pink; hardy.
- SOUV. DE LA MALMAISON**—Creamy-flesh, rose center.
- SOUV. DE PIERRE NOTTING**—Orange-yellow, bordered carmine.
- SOUV. d'UN AMI**—Bright pink, large and fine.
- SUNBURST**—The magnificent giant yellow Rose.
- SUNRISE**—A combination of yellow and red; very pretty.
- SUNSET**—Has the tints of a lovely golden sunset.
- THE QUEEN**—Beautiful, large, pure white flowers; extra.
- TRIUMPH DE PERNET PERE**—Magenta-red and rich crimson.
- UNCLE JOHN**—A grand, bright pink Rose, of largest size.
- VERNA MACKAY**—Sulphur-buff, shades of ivory.
- VISCOUNTESS FOLKSTONE**—Pure white, faintly tinted fawn.
- WELLESLEY**—Beautiful self-pink, very bright in color.
- W. E. LIPPIATT**—Brilliant velvety crimson and maroon.
- WHITE BOUGERE**—Pure immaculate white; extra.
- WHITE KILLARNEY**—Pure snow-white; extra.
- WHITE LA FRANCE**—Pure white, with shadings of fawn.
- WHITE MALMAISON**—Pure white, shaded lemon-yellow.
- WHITE TESTOUT**—Color pure white; large and fine.
- WILLIAM NOTTING**—Deep coral-pink; a grand Rose.
- WILLIAM SHEAN**—Purest pink; a gold medal Rose.
- WINNIE DAVIS**—Apricot-pink; most beautiful.
- YELLOW MAMAN COCHET**—Golden-yellow, flushed crimson.
- YVONNE VACHEROT**—Porcelain-white, retouched with red.

Climbing Tea and Noisette Roses

This class includes some of our most beautiful and valuable Roses. They are unusually free and continuous bloomers, producing flowers of rare and striking beauty. As they are all climbers, they should be placed near porches, pillars or trellises, where they have support. They are hardy in the South.

Price 12 cents each; any five for 50 cents. Price of large two-year-old plants of Climbing Roses named below, 40 cents each; three for \$1.00.

- CLIMBING BELLE SIEBRECHT**—Rich shell-pink; incessant bloomer.
- CLIMBING BRIDESMAID**—Clear rose-pink with crimson shadings.
- CLIMBING CLOTHILDE SOUPERT**—Ivory-white; center deep silvery-rose.
- CLIMBING DEVONIENSIS**—The Climbing Magnolia Rose; bluish-white.
- CLIMBING GRUSS AN TEPLITZ**—Deepest bright scarlet.
- CLIMBING KAISERIN AUGUSTA VICTORIA**—Ivory-white; elegant.
- CLIMBING KILLARNEY**—Long pointed buds of clear Killarney-pink.
- CLIMBING LIBERTY**—Brilliant velvety crimson.
- CLIMBING MME. C. TESTOUT**—Clear shell-pink, edged silvery-rose.
- CLIMBING MME. C. BRUNNER**—Rosy-pink on creamy-white ground.
- CLIMBING METEOR**—The acme of all red climbing Roses.
- CLIMBING PAPA GONTIER**—Bright coral-red; very fine.
- CLIMBING PAUL NEYRON (Madame Wagram)**—Clear satiny-rose.
- CLIMBING PERLE DES JARDINS**—Deep golden-yellow.
- CLIMBING SOUV. DE LA MALMAISON**—Creamy-flesh; peach-pink center.
- CLIMBING SOUV. OF WOOTTON**—Deep velvety crimson in clusters.
- CLOTH OF GOLD (Chromatella)**—A clear golden-yellow.
- DUCHESS DE AUERSTADT**—Color vivid nankeen-yellow. A fine climbing Tea Rose, and one that is very popular on the Pacific Coast.
- ELIE BEAUVILLAIN**—Salmon-fawn color; very elegant.
- FORTUNE'S DOUBLE YELLOW**—Known in California as the San Rafael Rose.
- FRANCES E. WILLARD**—A pure snow-white Rose; none better.
- GAINSBOROUGH**—White, delicately tinted flesh; extra.

- GLOIRE DE DIJON**—The old standby pink.
- JAMES SPRUNT**—Deep velvety crimson; very double.
- LAMARQUE**—Pure white; very double; an old standby.
- MADAME JULES GRAVEREAUX**—Deep yellow and rosy-peach.
- MARECHAL NIEL**—Magnificent golden-yellow. We have extra strong plants of Marechal Niel at **\$1.00 and \$1.50 each.**
- PILLAR OF GOLD (E. Veyrat Hermanos)**—Apricot and golden-yellow.
- REINE MARIE HENRIETTE**—Pure cherry-red; sweet scented.
- REVE d'OR (Golden Chain or Climbing Safrano)**—Orange-yellow.
- RUTH VESTAL (Climbing Bride)**—Pure white; extra.
- SOLFATARE**—Clear sulphur-yellow; large, full, double.
- W. A. RICHARDSON**—Orange-yellow; center copper-yellow.
- ZELIA PRADEL (Estella Pradel)**—Lovely pure white flowers.

New Varieties of Tender Climbing Roses

All of these New Climbing Roses in two-year-old plants, 65 cents each.

- CLIMBING ETOILE DE FRANCE**—Dazzling velvety crimson. 20 cents.
- CLIMBING HELEN GOULD**—Richest watermelon-red. Very free. Grand. 15 cents.
- CLIMBING RICHMOND**—In all respects excepting growth identical with the normal type from which it originated. Pure rich scarlet flowers. 25 cents.
- CLIMBING WHITE MAMAN COCHET**—This is a climbing form of White Cochet. Same flowers, same color; nothing beats it. 15 cents.
- CLIMBING SUNBURST**—Grand yellow. 35 cents.
- DANAE**—Golden-yellow in clusters. 25 cents.

Polyantha, or Baby Rambler Roses

A class of miniature Roses derived from the Climbing Polyantha. They are of dwarf habit and bloom so freely as to cover the entire plant with bloom all through summer and fall. The plants are splendid for bedding, or as edgings for borders they are hardy. Let us tell you something about these miniature Roses. While Europe has appreciated these Roses for years, America is just beginning to wake up to the fact that they have come to stay. They are useful, either pot grown or for bedding purposes or for hedge effect.

Price, 12 cents each; five for 50 cents; two-year plants, 40 cents each; three for \$1.00.

- ANNA MULLER**—The pink Baby Rambler; always in bloom.
- BABY RAMBLER**—Completely hides itself all summer; bright red.
- CATHERINE ZEIMET**—The White Baby Rambler; extra.
- ELLEN POULSON**—Dark brilliant pink; fragrant; fine.
- ERNA TESCHENDORFF**—Deep crimson flushed with carmine; very dark.
- JESSIE**—Bright cherry-crimson. Superb.
- LE PONCHEAU**—Dark red in large clusters.
- MADMOISELLE CECILE BRUNNER**—This is the popular Baby Pink Rose. In the past year or two this Rose has fairly jumped into popularity. It always was a popular outdoor Rose on the Pacific Coast, but recently even in the effete East and everywhere in America they are planting it simply by thousands for cut flowers. It has become quite the rage. It makes a handsome

- miniature Rose, coming in sprays of three to five buds, and combines in beautiful effect with so many other flowers in all kinds of floral work. It is a very prolific bloomer and if carefully protected in the winter should be a money maker, both outdoors and under glass. The bud and flower are both handsome. Color blush, shaded light salmon-pink; distinct and desirable.
- MARIE PAVIE**—Elegant white flushed with pink.
- MRS. WM. H. CUTBUSH**—Flowers the delicate pink of Dorothy Perkins.
- PAQUERETTE**—Pure white; perfectly double.
- PERLE d'OR**—Coppery-orange, changing to fawn.
- PRIMULA**—The finest of all pink Polyanthas.
- PRINCESS MARIE ADELAIDE**—Completely hides itself with its beautiful deep pink flowers.
- SCHNEEWITCHEN**—This is the famous "Snow-White." A profuse bloomer; pure white, in clusters,

New Polyantha, or Baby Rambler Roses

BABY FARBENKONIGIN—This is a new baby Rose bearing flowers that in color are same as Farbenkonigin or Queen of Colors. Clear pink. 15 cents.

BABY TAUSENDSCHOEN—Its flowers are large, so much like Tausendschoen that it has been rechristened "Baby Tausendschoen." It is a bush form of the "Climbing Tausendschoen," or "Thousand Beauties," having all the charm in the variable coloring in its flowers that its parent has, being firm white, delicately flushed pink, changing to deep rosy-carmine. This is a splendid Rose. Try it. 15 cents; two-year plants, 40 cents.

DEWDROP—Cherry-red; lasts a long time, grows easy. A very double Rose. 15 cents.

EUGENIE LAMESCH—Orange-yellow, passing to clear yellow, shaded rose; produced in large clusters. Fine. 15 cents.

GEORGE ELGER—A lovely little golden-yellow Polyantha Rose, with a good admixture of Tea blood; like all of its class, it is free in growth, free in bloom, with small, glossy foliage produced in profusion. The dainty little pointed yellow buds open into pretty little symmetrical Roses. Will prove a very popular corsage variety; is grown in quantity now for this purpose. 15 cents; two-year plants, 40 cents.

MAMAN TURBAT—Branching growth, large, full flowers, produced in large panicles of twenty to thirty flowers. Color clear peach-pink, one of the best in this section. 15 cents.

ORLEANS—The showiest and prettiest of all the Baby Ramblers. This charming and dainty Rose is of beautiful rounded habit and is a huge bouquet of deep cerise or Geranium-pink, with distinct showy center of pure white; florets not crowded, but of beautiful arrangement, making as a whole a charming combination that cannot be beaten. The color is irresistible. The plant grows like a weed and the flowers are nearly "immortelle" in their lasting qualities. We believe that they will outlast almost any other Rose in existence with their stiff paper-like texture. This pretty Rose has taken Europe by storm and is making a sensation in this country. Awarded gold medal. 15 cents; two-year plants, 40 cents.

TIP TOP ("Baby Doll")—This delightful little "Sweetheart" Rose is a wonder. The color is absolutely new, and quite startling in its brilliancy, golden-yellow tipped with clear, bright cerise. The foliage is narrow, long and sharply pointed, a deep glossy green—a very beautiful setting for the lovely little doll-roses, a bench of "Baby Doll" being an even parterre of delicious color. 25 cents.

"Famous" Rose Collection for Garden Planting

We guarantee that no better Twelve Roses for the garden were ever offered than this "Famous" Collection. Try them. Price, 12 cents each; any five for 50 cents; the entire twelve for \$1.00; two-year-old plants, 35 cents each; any five for \$1.50; the entire twelve for \$3.00.

ANTOINE RIVOIRE—This is the famous Mrs. Taft Rose of the fashionable Eastern markets. This Rose is in a class by itself; no Rose ever produced has such substance of petal; color creamy-white with rainbow tints; a beauty and a wonder.

BESSIE BROWN—A Rose of transcendent beauty; of the largest size; color pearl-white with a delicate tinge of fawn.

ETOILE DE FRANCE—For the best red garden Rose it lies between this one, Rhead Reid and Helen Gould. Some say one and some say the other.

ETOILE DE LYON—Still the best large golden-yellow Rose.

HELEN GOOD (The Beauty Cochet)—What the introducers say: "This is a true Cochet Rose, and after two years' trial in the garden we pronounce it as good if not better than any Rose for the garden ever sent out. We bought the entire stock of this Rose, paying \$1,000 for two plants, this being by far the highest recorded price ever paid for any Rose. The color is a delicate yellow, suffused with pink, each petal edged deeper, very chaste and beautiful. The color, with its immense size and exquisite form, makes it without question the greatest Tea Rose ever introduced, and we are proud to have brought it out."

HELEN GOULD—A rich red Rose that is a great bloomer; the shade of red has been described best as a watermelon-red; elegant.

KAISERIN AUGUSTA VICTORIA—A grand white garden Rose that has stood the test of time. Full and double; fine buds and flowers.

LA FRANCE—This is claimed by many to be the queen of all the Roses; bright silvery-pink.

MAMAN COCHET (The Queen of all Garden Roses)—Such beauty and exquisite form as is possessed by this variety is well-nigh marvelous, and cannot be seen in any other Rose we know of. The buds are beautiful, large, full and firm and elegantly pointed; as they expand they show great depth and richness, sometimes measuring two and a half inches from base to tip. Flowers superb when open, extra large, perfectly double and of splendid substance. Small pot plants will in the open ground quickly make large, strong bushes and produce, on long, stiff stems, great numbers of perfect flowers that are enchanting in fragrance and delicate brightness. The color is rich, clear pink, changing to a silvery-rose. As we see it, one good Rose like any of the Cochet Roses is worth a whole collection of poor ones.

SOUVENIR DE PRES. CARNOT—A grand Rose of the largest size; the color a delicate fawn or salmon; extra fine.

WHITE MAMAN COCHET (No Finer Rose Than This)—This Rose attracted our attention from the very first time we ever saw it in flower. It is of the largest size, and as you will notice, the flower is built up, or rounded, and very double. The color is a pure snow-white. Sometimes outdoors it is tinged pink, which only adds to its great beauty. No Rose surpasses it in vigorous growth and in the immense size of its buds and flowers—indeed, nothing in the Tea family approaches it in size. Deliciously fragrant.

WM. R. SMITH—This Rose has several names, such as Charles Dinger, Jeannette Heller, Maiden's Blush, etc. Color delicate blush. It has no superior as a garden Rose.

"Home" Collection of Ever-Blooming Roses—all Best Kinds

Price for Collection of Choice "Home" Roses, only 60 cents.

We have made a selection of the very best Roses for winter blooming, embracing a wide range of color. We can recommend this collection to all who desire to grow Roses in the house during winter. Equally good for planting in the garden.

SAFRANO—The old standby for a winter bloomer; lovely saffron-colored buds of the most delicious fragrance.

PAPA GONTIER—Deep red; very free and sweet.

BRIDESMAID—This is a fit companion for the Bride. It is also planted by the millions for winter blooming. The best deep pink Rose for this purpose.

REMEMBER, THIS ENTIRE COLLECTION OF SIX "HOME" ROSES FOR ONLY 60 CENTS; PER SINGLE PLANT, 12c. THESE SIX "HOME" ROSES IN TWO-YEAR SIZE FOR ONLY \$1.50, OR 30c EACH.

BON SILENE—Deep rose, illumined with bright red; a grand winter bloomer; very sweet.

THE BRIDE—Best winter blooming white Rose; planted by the millions by growers of cut flowers; none finer.

ISABELLA SPRUNT—Flowers freely during the winter; flowers of the richest yellow color.

"Giant" Collection of Two-Year-Old Roses FOR IMMEDIATE EFFECT

These large Roses have become so popular among our customers that we devote a great deal of room to them, growing them in constantly increasing number. This fall we have a heavy stock and offer many thousand bushes at the very low figures given. We can usually furnish all the varieties enumerated in the catalogue. These bushes are two years old, strong and healthy. They make, of course, more of an appearance from the first than does the smaller stock, having practically a year the advantage in all respects—an advantage for which we find many persons willing to incur the additional expense. We advise all of our friends to order at least a part of their Roses in this large two-year-old size. Plant them this fall.

GIANT COLLECTION—Four two-year-old Ever-Blooming Tea Roses, our selection, sent by mail, all different colors, for \$1.00.

The Newer and More Scarce Hybrid Roses

Price, 20 cents each, except where noted. Two-year size, 50 cents each, except where noted. These Roses are hardy and suitable for planting in cold climates. All are extremely fragrant.

AMERICAN BEAUTY—Color red, with touches of crimson, and intensely fragrant. No Rose has a sweeter or more penetrating fragrance than American Beauty. A most beautiful Rose and a great favorite. **25 cents; two-year plants, 60 cts.**

BARONESS ROTHSCHILD—Clear bright pink; large; superb form. **25 cents; no two-year plants.**

DUCHESS OF SUTHERLAND—Delicate warm rose-pink, with lemon-yellow shadings on the white base. Large and massive. **25 cents; two-year plants, 50 cents.**

FRAU KARL DRUSCHKI—Best white Rose of all Roses.

GEORGE DICKSON—Velvety black scarlet-crimson, with brilliant scarlet reflexed tips, with heavy and unique pure crimson-maroon veining on the reverse; **35 cents; no two-year plants.**

HEINRICH MUNCH—Soft pink; very large and full. This is the Rose that beat all comers at the Boskoop Show. **25 cents; two-year plants, 60 cents.**

HIS MAJESTY (The King of Roses)—Dark, deep crimson; superb. Mr. Crowell, the noted rosarian, says the best of all red Roses.

HUGH DICKSON—Intense velvety crimson, shaded scarlet.

J. B. CLARK—An intense deep scarlet, shaded black.

KING GEORGE V—Color rich blackish-crimson, flushed deep velvety crimson. **35 cents; two-year plants, 60 cents.**

LUDWIG MOLLER—This is the wonderful Yellow Druschki. It has all the good qualities of Frau Karl Druschki. Vigorous grower, free bloomer, and has deep golden-yellow flowers. A great beauty. **\$1.00 each; no two-year plants.**

MARGARET DICKSON—Pure waxy-white, of largest size.

MRS. JOHN LAING—Of immense size; bright shell-pink.

MRS. R. G. SHARMAN CRAWFORD—Deep rosy-pink; superb.

NOVA ZEMBLA—The pure white Conrad F. Meyer.

PINK FRAU KARL DRUSCHKI, or GEORGE AHRENS—This is a wonderful new Rose, just as fine in its way as a pink Rose as Frau Karl Druschki is as a white Rose. Extra fine; brilliant clear pink. **25 cents; two-year plants, 60c.**

Standard Varieties of Hybrid Perpetual Roses HARDY EVERYWHERE

Price, 15 cents each; four for 50 cents; nine for \$1.00. Two-year size, 40 cents; three for \$1.00.

ALFRED COLOMB—Bright red; globular; free.

ANNE DE DIESBACH (Glory of Paris)—A lovely carmine-rose.

BARON DE BONSTETTIN—Rich, dark velvety maroon.

BLACK PRINCE—A rich, brilliant dark crimson.

BOULE DE NEIGE (Ball of Snow)—Pure white; fine.

CAPTAIN CHRISTY—Lovely peach-pink, deepening to rosy-crimson.

CAPT. HAYWARD—Deep glowing crimson; none better.

CHAS. LEFEBVRE—Velvety crimson and darkest maroon.

CLIO—Delicate flesh, with center of rosy-pink.

CONRAD F. MEYER—Clear flesh-pink; four inches across.

COQUETTE DES ALPES—Pure white; very full; free; fragrant.

DUC DE ROHAN—Clear, dazzling bright red; extra.

DUKE OF EDINBURG—Richest bright red.

EARL OF DUFERIN—Grand deep rich red Rose; fragrant.

EUGENE FURST—Deep red shaded crimson; extra fine.

FRANCOIS LEVET—China-pink; delicately shaded carmine.

GENERAL JACQUEMINOT—Known as "General Jack;" shining crimson.

GLOIRE DE L'EXPO. DE BRUXELLES—Bright crimson; velvety texture.

GLOIRE DE MARGOTTIN—Clear, dazzling red; fragrant.

GLOIRE LYONNAISE—Pale shade of chamois or salmon-yellow.

GUSTAVE PIGANEAU—Carmine-lake; very large.

JOHN HOPPER—Color brilliant deep rose, shaded scarlet.

JUBILEE—Deep crimson-red and velvety maroon.

LOUIS VAN HOUTTE—Rich crimson, heavily shaded maroon.

MADAME CHAS. WOOD—Bright, rich cherry-red; a free bloomer.

MADAME MASSON—Color bright, rich crimson; a gem.

MADAME PLANTIER—This is the ironclad white cemetery Rose.

MAGNA CHARTA—Bright, clear, deep pink, flushed rose.

MARIE BAUMANN—One of the very best red Roses.

MARSHALL P. WILDER—Scarlet-crimson, richly shaded maroon.

PAUL NEYRON—Lovely deep rose or bright pink; large.

PRINCE CAMILLE DE ROHAN—Deep, rich, velvety crimson.

ULRICH BRUNNER—Glowing crimson flamed with scarlet.

VICK'S CAPRICE—Satiny-pink striped white and carmine.

Hardy Climbing Roses, Including Ramblers

Price, 15 cents each; any four for 50 cents. Two-year-old plants, 40 cents; three for \$1.00.

AVIATEUR BLERIOT—Saffron-yellow, golden center.

BALTIMORE BELLE—Blush white, in large clusters.

CLIMBING BABY RAMBLER—Bright red; blooms all the time.

CRIMSON RAMBLER—The flowers are in huge red panicles.

DR. W. VAN FLEET—Delicate shade of flesh-pink.

DOROTHY PERKINS—A beautiful shell-pink; full and double.

EMPRESS OF CHINA—Bright pink, in large clusters.

FLOWER OF FAIRFIELD—The everblooming Crimson Rambler.

GRAF ZEPPELIN—Coral-red; abundant bloomer.

HIAWATHA—Brilliant ruby-carmine with clear white eye.

LADY GAY—Very double, deep pink, in large clusters.

MADAME ALFRED CARRIERE—Pure white suffused with yellow at base of petals.

MARY WASHINGTON—Pure white; perfectly double; fine.

PHILADELPHIA RAMBLER—Clusters of darkest crimson.

PRAIRIE QUEEN—The old standby red climber.

RUSSELL'S COTTAGE—Dark red; double and full.

SEVEN SISTERS—Variable crimson to white; in clusters.

TENNESSEE BELLE—A bright rose-colored flower.

TRIER—Creamy-white, producing large clusters.

WHITE DOROTHY PERKINS—Pure white, in immense clusters.

YELLOW RAMBLER (Aglia)—Light lemon-yellow.

The New Hardy Climbing Roses

AMERICAN PILLAR—A single flowering variety of great beauty, which appeals to everyone. The flowers are of enormous size, three to four inches across, of a lovely shade of apple-blossom pink, with a clear white eye and clusters of yellow stamens. These flowers are borne in immense bunches. They last in perfection a long time, and are followed by brilliant red hips of berries, which are carried late into the winter; and as the plant frequently retains its lovely green foliage until the end of November, it forms a beautiful decorative subject throughout the autumn months. **20 cents; two-year plants, 50 cents.**

BRAISWICK CHARM—For arches, pergolas, or for screens this variety is undoubtedly foremost. Deep orange-yellow bud shading almost to white on the outer petals as the flower expands. The nearest approach to the perpetual flowering *Wichuraiana*. **35 cents.**

CHRISTINE WRIGHT, or PINK CLIMBING AMERICAN BEAUTY—This is identical with the Red Climbing American Beauty described next below this variety; flowers four inches in diameter; color bright, clear pink; immense. Try it; a fine companion for Climbing American Beauty. **20 cents; two-year plants, 50 cents.**

CLIMBING AMERICAN BEAUTY—Color red, with touches of crimson, and intensely fragrant. **20 cents; two-year plants, 40 cents.**

GARDENIA (The Hardy Marechal Niel)—This grand Rose has proven itself hardy in Virginia and Tennessee. It is a deep golden-yellow of the largest size. **50 cents; two-year plants, \$1.00.**

GEISHA—Brilliant scarlet-crimson. The long shoots are completely covered with bloom the entire length. A wonderfully pretty Rose. **50 cents.**

LE MEXIQUE—Delicate silvery-rose, turning to rosy-white, reverse of petals light rose. Large for its class. Flowers full, opening well, produced in clusters. Continuous and perpetual flowering. **20 cents; two-year plants, 50 cents.**

ORIFLAME—Bright vivid rose, suffused with coppery-gold borne in bunches of numerous flowers with bold, fountain-like sprays. Extra. **50 cents.**

PINK TAUSENSCHOEN—All know that the only fault to find with Tausendschoen is that it at times is too light in color. Here we have in Pink Tausendschoen the ideal pink Climbing Rose. The color resembles the well known Ulrich Brunner Rose with its famous cherry-red color. **35 cents; two-year plants, 65 cents.**



"Thousand Beauties" (Tausendschoen). (See page 13.)

THE NEW HARDY CLIMBING ROSES—Concluded.

RED DOROTHY PERKINS, or EXCELSA—It is a good deal to claim for a Rose, but we are within bounds when we describe Excelsa as a brilliant Crimson Rambler flower on glossy, varnished Wichuraiana foliage. The defects of Crimson Rambler are its unsightly foliage in unseasonable weather, and its defoliation by insects; the infusion of Wichuraiana blood assures an ornamental climber which is nearly evergreen, and this will assure this lovely crimson-scarlet pillar Rose a place in every American garden, for it is quite hardy in addition to all its other fine points. The flowers are very double, produced in large trusses of thirty to forty, and almost every eye on a shoot produces large clusters of flowers. The color is intense crimson-maroon, the tips of the petals tinged with scarlet. The finest of all red climbing Roses. **20c; two-year plants, 40c.**

SHOWER OF GOLD—This variety produces masses of flowers in large clusters. The color is a deep golden-yellow, with orange shadings in the center. Enormous lateral branches are produced, which are densely clad with glossy green foliage that resists disease. This fills the "long felt want" for a hardy yellow climbing Rose. **25 cents; two-year plants, 50 cents.**

SILVER MOON—Flowers very large, four and one-half inches and over in diameter. Pure white in color; petals of great substance, beautifully cupped, forming a clematis-like flower. The large bunch of yellow stamens in the center adds to its attractiveness. These flowers are borne on strong stems twelve to eighteen inches long, and are delicately scented. The plant is a strong grower, with large, glossy, bronze-green foliage. **25 cents; two-year plants, 50 cents.**

SOURCE DE OR—A most beautiful variety. Large for its class. Full flowers. Color golden-yellow.

A great acquisition, producing large panicles of flowers. A decided beauty. **25 cents; two-year plants, 50 cents.**

SWEET LAVENDER—Bright pale mauve or lavender, with golden stamens. Most distinct. Dense, dark green foliage and many large bunches of flowers. Very vigorous. **25 cents; two-year plants, 50 cents.**

TAUSENDSCHOEN, or THOUSAND BEAUTIES—A climbing Rose that comes to us from Germany. The flowers upon first opening are the most delicate shade of pink ever seen in a Rose, might be described as a white delicately flushed pink, changing to rosy-carmine. It gets its name from its many flowers and the variation in coloring. This Rose is sweeping the country like a prairie fire. **20 cents; two-year plants, 50 cents.**

VEILCHENBLAU (The Wonderful New Blue Rose)—This is a Rambler, and will thrive anywhere, being perfectly hardy. It has created a great stir in the Rose world, for the talk of a Blue Rose has been going on since time immemorial. It first opens a pink color, quickly changing to a decided violet-blue. When the plant is in full bloom it presents a startling effect. **15 cents each; two for 25 cents; two-year plants, 40 cents.**

WICHMOSS, or "CLIMBING MOSS"—This is a wonderful break in Roses, being a cross between the "Wichuraiana" and "Moss Rose." It has retained the scandent habit of the "Wichuraiana," making long growths five to eight feet in length with the glazed resistant foliage, while the bud is heavily mossed in bright green and has the peculiar aromatic odor of the Moss family. The flowers are borne in clusters that are a daybreak-pink in color, opening into bloom that is a good semi-double in fullness. A climbing Moss is a wonder; hardy. **35 cents; two-year plants, 75 cents.**

Moss Roses

These are probably a sport of the Cabbage Rose. The origin of the double Moss Rose is left to conjecture. They have always been favorites, for what can be more elegant than the bud of the Moss Rose and more delicious than its fragrance. Perfectly hardy. **25 cents each; the four for 80 cents; two-year plants, 50 cents each, the four for \$1.50.**

ELIZABETH ROWE—This is an old favorite, with its large deep pink buds well mossed. A beauty.

HENRI MARTIN—Large, full flower of deep red; well mossed; fragrant.

MOUSSELINE—Pure white flower, buds heavily and beautifully mossed.

PRINCESS ADELAIDE—Deep blush-pink, with buds that are thoroughly mossed.

Pernetiana Roses or Austrian Briar

A new family of Roses; native of the south of Europe. The varieties we offer are new, and were introduced by the great French rosarian, Pernet Ducher, and Wm. Paul & Son, of England. They resist the coldest weather and produce flowers in the greatest abundance, with strange colors not to be found in any other section of Roses.

ARTHUR R. GOODWIN—This is a genuine "Pernetiana," and is perfectly hardy everywhere. The color is coppery orange-red, passing to salmon-pink as the flowers expand. A superb combination of color; flowers medium to large and full. Should prove a most valuable Rose. As this variety grows from cuttings, we offer it on its own roots. **25 cents; two-year plants, 60 cents.**

MADAME EDWARD HERRIOTT—"The Daily Mail Rose." Winner of the gold cup which was offered by the London Daily Mail, for the best new Rose, exhibited at the International Horticultural Exhibition, held in London, England, May, 1912 (this was the greatest horticultural exhibition ever held), and to be known as the Daily Mail Rose. In competition with the world's greatest rosarians this much coveted prize was awarded to M. Pernet Ducher for this wonderful novelty. It was again exhibited in London on May 1, 1913, at the exhibition of the National Rose Society of England, where it was awarded the Society's gold medal. M. Pernet Ducher describes its color as follows: "Buds coral-red, shaded with yellow at the base, the open flowers of medium size, semi-

double, are of a superb coral-red, shaded with yellow and bright rosy-scarlet passing to a shrimp-red." One of our American correspondents, a friend of the introducer, who had the pleasure of testing it in this country, says: "A wonderful Rose. The bud is long, slender and pointed, the color is like sunshine on a copper-red metal." **\$1.00 each; two-year plants, \$2.00 each.**

VISCOUNT ENFIELD—Coppery old rose, shaded with yellow. The inner petals are deeply tinted with carmine, while the center ones are sometimes striped with yellow. Flowers large, full, elongated; very floriferous. **25 cents; two-year plants, 60 cents.**

WILLOWMERE—Color rich shrimp-pink, shaded yellow in the center, and toning to carmine-pink towards the edges of the petals. Vigorous growth and erect, branching habit. Long, carmined, coral bud carried on long, stout flower stalks. Very large flowers, full, and of elongated cup shape. A superb Rose. **25 cents each; two-year plants, 60 cents.**

Rugosa Roses

The Rugosa Roses are natives of Japan, and are nearly all allied botanically to the microphylla Roses. They form sturdy, disease-resisting bushes, almost evergreen in the coldest climate. Fine for hedges. Hardy everywhere. **25 cents; two-year plants, 50 cents.**

MADAME GEORGES BRUANT—Paper-white, large, very free and distinct, flowering in clusters; most beautiful.

NEW CENTURY—A grand Rose that is entirely hardy, bearing beautiful silvery-pink flowers in clusters. This Rose is in bloom all the time. Extra fine for nurserymen.

SIR THOMAS LIPTON—The best pure white Rugosa Rose. Strong and vigorous; grows four feet high. Flowers perfectly double, pure snow-white. Fragrant; borne on long stems continuously throughout the season. Absolutely hardy everywhere. Splendid for hedging, cemetery and park work.

Miscellaneous Roses

AMOENA (The Pink Flowering Cherokee Rose)—This wonderfully beautiful Laevigata or Cherokee Rose was raised in California, and it will sweep the state like wildfire when it is once known. The flowers are the same as the white flowering Cherokee, except that the color is a glowing pink with golden-yellow center. Resembles huge apple blossoms. **15 cents; two-year-old, 50 cents.**

DOUBLE LAEVIGATA (or the Double Flowering Cherokee)—A beautiful hardy Rose, bearing double white flowers; very fine. The foliage of this Rose is very distinct. **10 cents each; two-year-old plants, 50 cents.**

LAEVIGATA (The Single White Cherokee Rose)—This is the famous Cherokee Rose so well known

in California. Large, pure white flowers with center filled with golden-yellow anthers. **10 cents; two-year-old plants, 50 cents.**

WICHURAIANA, or MEMORIAL ROSE (Dr. Wichura, of Japan, 1886)—It is difficult to conceive anything more appropriate, beautiful and enduring for covering graves and plots in cemeteries than the Hardy Memorial Rose. It creeps along the ground as closely as an Ivy. The flowers are produced in lavish profusion in July. They are single, pure white, with a golden-yellow disc, five to six inches in circumference. It is also immensely valuable as a climbing Rose, for covering arches, fences, etc. **10 cents each; two-year-old plants, 40 cents.**

SPLENDID PEONIES Hardy Everywhere

“Aristocrat of the Flowers”

Peonies for Pleasure



Monsieur Jules Elie.

This book of “Peonies for Pleasure” gives information on Peony history; soil and plants to use; how and when to plant; fertilizers and how to apply, and describes the most extensive planting of really valuable Peonies ever gathered together under the sun; describes the old and the new, as well as the plebeian and aristocrat of the Peony family. If you want information on the plant that stands next to the Rose in beauty, that is practically known to the amateur as simply a red, white and pink Peony, then send for “Peonies for Pleasure.”

The wonderful improvement made during recent years in these old-fashioned hardy plants has brought them into a renewed popularity. The gorgeous flowers, which rival the finest Roses in size, form and color, are produced in great abundance. After once being planted they require little care and attention, thrive anywhere, and are absolutely hardy even in the coldest climates; each year after planting they grow into greater value, producing more and more flowers. They are not troubled with insect pests. Try some of our fine Peonies and see what grand flowers they are.

Get it out of your head that there are only Red, White and Pink Peonies. To illustrate: At flowering time, people who visit our field will say, “I have Pink and White Peonies, I desire only Red ones,” but when they are shown the Pink and White they invariably exclaim, “How grand! I have none like them.” There is as much difference in Peonies as there is in Roses.

Size of Roots *The size of Roots offered in this Catalogue are divisions of two to five eyes. We cannot supply in any other sizes in the spring time. We would ask that our patrons order by number as well as by name to avoid mistake.*

Special Collection of Peonies

To those who do not care for the nomenclature of the Peony we have made up several collections which we here offer as an aid to making selections. Patrons will find these varieties embrace a wide range of color and form, and are exceptionally meritorious.

Collection A

This collection embraces the Peonies of merit that are a great bargain at the prices here quoted.

68—Achille	\$0.35
114—Agida35
2—Berlioz35
11—Canari35
34—Charlemagne35
41—Duchess de Nemours ..	.35
22—Duke of Wellington ..	.35
27—L'Ecletante35
275—L'Indispensable35
82—Louis Van Houtte35
31—Marie Lemoine35
40—Queen Victoria35

Total \$4.20

Any six of Collection A for \$1.90; the entire twelve, Collection A, costing \$4.20, for only \$3.50.

Collection B

This collection includes a list of choice varieties at popular prices; much lower in cost than you can buy elsewhere.

23—Auguste Lemonier	\$0.50
79—Edulis Superba50
30—Festiva Maxima50
28—Lady Leonora Bram-	
well50
135—Linne50
138—Madame Bucquet50
32—Madame Forel50
39—Marechal Valliant50
10—Marié Stuart50
35—Meissonier50
6—Monsieur Krelage50
50—Princess Beatrice50

Total \$6.00

Any six of Collection B for \$2.50; the entire twelve of Collection B for \$4.50.

Collection C

This collection covers the entire range of form and color in the Peony. We challenge comparison as to their great beauty and to the very low price at which we offer them.

12—Albert Crousse	\$0.75
102—Asa Gray75
132—Avalanche75
128—COURONNE D'OR75
93—Eugenie Verdier75
67—Golden Harvest75
46—Jenny Lind75
276—Marguerite Gerard75
246—Masterpiece75
48—Monsieur Jules Elie ..	.75
51—President Roosevelt ..	.75
181—Triomphe de Expositi-	
tion de Lille75

Total \$9.00

Any six of Collection C for \$4.00; the entire twelve of Collection C for \$7.50.

Seedling Peonies

You do not know what colored flowers you will get, but every one will be handsome; many of them will be single and resemble huge butterflies of white, red, pink, crimson, etc., while others will be double. Be sure and try some of these seedlings. Do not ask us to send any special color, as no one knows the color until they bloom. 30 cents; two for 50 cents; five for \$1.00.

Peonies to Color

Usually called Mixed Peonies, all Double Flowering

Our Peonies to color you will find unsurpassed. They are fine large flowers with rich colors; free bloomers. The roots we offer are strong. Be sure and try them. We have these Peonies in white, red, pink and rose at 30 cents; four for \$1.00.

A List of the Choicest Peonies

You may order by the number preceding the variety, or by name, or, better still, in ordering use both number and name. REMEMBER, for a more extended description of these Peonies write for our booklet, "Peonies for Pleasure."

- | | |
|---|---|
| <p>68—ACHILLE—Like a huge Enchantress Pink Carnation flower; exquisite. 35 cents.</p> <p>114—AGIDA—A grand bright showy red, very bright, gay and showy. 35 cents.</p> <p>12—ALBERT CROUSSE—Immense, very full convex bloom as perfect in outline and contour as a show Dahlia. An even delicate sea-shell pink. Superb. 75 cents.</p> <p>102—ASA GRAY—Large imbricated rose form bloom; guards salmon-flesh, center flesh-pink, dotted and flaked carmine; extra. 75 cents.</p> <p>23—AUGUSTE LEMONIER—Superb brilliant red, with velvety finish; fragrant. 50 cents.</p> <p>132—AVALANCHE—Opens like a rose bud; snow-white, with delicate penciling of carmine. 75 cents.</p> <p>2—BERLIOZ—Enormous, full globular imbricated bloom; bright currant-red; petals tipped silver. 35 cents.</p> <p>11—CANARI—Primary petals white flushed delicate pink, changing to pure white, with deep primrose-yellow center; richly fragrant. One of the freest blooming of all Peonies. 35 cents.</p> <p>34—CHARLEMAGNE—A Peony that has many admirers; blooms late. Color a delicate tint of lilac or heliotrope. Grand, 35 cents.</p> <p>128—COURONNE D'OR—This is the famous Crown of Gold. Very full, imbricated ball-shaped bloom. Solid and compactly built from edge to center. Color snow-white reflecting golden-yellow stamens that show through the petals when looking at the flower from the side. These stamens light up the whole flower with a glow that is simply indescribable and which suggests the name "Crown of Gold." Immense. 75 cents.</p> <p>41—DUCHESS DE NEMOURS—Superb cup-shaped; sulphur-white flowers, fading to pure white. In all Peonies there is nothing so exquisitely chaste and beautiful as this variety in the half-open bud state; excels as a cut flower. Don't omit it. 35 cents.</p> | <p>22—DUC DE WELLINGTON—Flowers of enormous size, really gigantic, pyramidal in shape; clear sulphur-white. 35 cents.</p> <p>79—EDULIS SUPERBA—This is called the Decoration Day Peony as it is always in full bloom in southern Ohio for May 30th. Clear, mauve-pink. 50 cents.</p> <p>93—EUGENIE VERDIER—The flowers are enormously large for a Peony. It opens a fresh delicate Hydrangea-pink, center flushed deeper; a great beauty. 75 cents.</p> <p>30—FESTIVA MAXIMA—This is not only the finest white in existence, but in most quarters it is regarded as the queen of all the Peonies. Mr. Harrison says: "This flower has reached the ultimate beyond which we cannot go." It combines enormous size with wondrous beauty, often seven to eight inches in diameter; color snow-white, flecked with an occasional clear purple spot on the edge of center petals; in addition, it is very fragrant; a glorious flower, impossible to describe; magnificent. 50 cents.</p> <p>67—GOLDEN HARVEST—It combines cream, gold, white, pink, salmon, peach and apricot, the total color effect of the flower being golden-pink. A most striking variety. 75 cents.</p> <p>46—JENNY LIND—Large bloom on long stems; tall grower; free bloomer; color light pink with silvery reflex with narrow white petals interspersed with the center petalage. A most striking variety and one that has many admirers. 75 cents.</p> <p>28—LADY LEONORA BRAMWELL—This is a charming, large, full and exceedingly fragrant flower of perfect symmetrical form. The color is delicate silvery-rose with lively pink center; petals tipped creamy-white with an occasional crimson fleck. In many localities is grown largely for cut flowers. 50 cents.</p> <p>27—L'ECLETANTE—Flowers double and full; color deep brilliant velvety crimson. Extra fine. 35 cents.</p> |
|---|---|

A LIST OF THE CHOICEST PEONIES—Concluded.

- 275—L'INDISPENSABLE**—It is a huge ball of delicate baby-pink. Has by far the most petals of any Peony in our collection. On the Pacific slope this is said to stand at the head of the list of all varieties. The past June it was as fine a Peony as any in our entire collection. **35 cents.**
- 135—LINNE**—Large, globular, compact bloom. Color Tyrian-rose; guards slightly flecked with crimson; quite floriferous. At a reception held in Springfield, a lot of Linne cut with three and a half foot stems placed in a vase four feet in height was more admired than any variety displayed, and there were some three thousand Peony blooms used. It is a wonder. **50 cents.**
- 82—LOUIS VAN HOUTE**—Very fine, shapely bloom; color bright violaceous red of dazzling effect. **35 cents.**
- 138—MADAME BUCQUET**—Color velvety crimson, almost black; very rich and magnificent. **50 cts.**
- 32—MADAME FOREL**—Enormous, very full double bloom; color glossy, deep pink with a silvery reflex; known as the "Princess of Pink Peonies," a title it well deserves and proudly carries. Almost as large as the famous Monsieur Jules Elie. Extra fine. **50 cents.**
- 39—MARECHAL VALLIANT**—Immense globes of clear red with shades of mauve. **50 cents.**
- 276—MARGUERITE GERARD**—Color delicate pink, changing as the flower ages to creamy-white; a sensational flower. **75 cents.**
- 31—MARIE LEMOINE**—The flowers are enormous and massive, often eight to ten inches across. Color ivory-white with occasional narrow carmine tracing on edge of some petals. A sort the Peony enthusiast raves over, and well he may. **35 cents.**
- 10—MARIE STUART**—The color is a delicate lavender flecked with cerise. Our field plot of Marie Stuart in bloom is surely "a carpet fit for the feet of angels to tread." **50 cents.**
- 246—MASTERPIECE**—Brilliant Tyrian-rose; free bloomer. A very distinct and beautiful variety. Fine, tall grower; fragrant. **75 cents.**
- 35—MEISSONIER**—Very brilliant crimson, called in the Chicago market the American Beauty Peony, as it resembles that Rose in color. **50 cents.**
- 48—MONSIEUR JULES ELIE**—This is the king of all Peonies, and is without question M. Crousse's masterpiece. Immense, globular, very full flowers. Color an ideal glossy lilac-pink, shading to deeper rose at the base, the entire flower overlaid with a sheen of silver that fairly shimmers in the sunlight. Monsieur Jules Elie is claimed by many to be the largest of all Peony flowers. On young, vigorous plants we have had flowers eight and nine inches through. In fact they are so large and handsome that but few can realize they are Peony blossoms on first seeing them. An unapproachable variety from any standpoint. When cut in the bud a good keeper, thus fine for cut flowers. Our planting comprises some twenty thousand plants of this grand Peony. Easily scores the six points of excellence. **75 cents.**
- 6—MONSIEUR KRELAGE**—Deep currant or solferino-red, with amaranthine center. The French hybridists evidently spilled their paint pot after producing this superb variety, as there is nothing in Peonies of its color. **50 cents.**



- 51—PRESIDENT ROOSEVELT**—It is a deep, rich, brilliant red in color, different from any red we know, and a grand Peony. **75 cents.**
- 50—PRINCESS BEATRICE**—Large, compact, high built crown. Guards delicate lilac-rose, collar creamy-white with shades of amber. Crown of brilliant sea-shell pink, the extreme center flecked crimson. A glorious flower, a very "splendor of fragrant loveliness;" free bloomer, fragrant. Unquestionably the best of all the tricolor Peonies. Simply exquisite. **50 cents.**
- 40—QUEEN VICTORIA**—The very best every day white. When cut a first rate keeper. Flower of good substance and color; very pretty in the bud state, when it has a faint blush tint; an old standby. **35 cents.**
- 181—TRIOMPHE DE EXPOSITION DE LILLE**—Large compact bloom of a fresh bright pink. Splashed with darker tints of violet-rose and with white reflex. This is one of our favorite Peonies. **75 cents.**

TREE PEONIES

This is a remarkable species, developed from Peony Mouton, a native of China and Japan. In habit of growth it is not unlike a deciduous shrub—the growths are short and stocky, the plant eventually attaining a height of four or more feet and of large circumference; the foliage is quite handsome, and the immense flowers, which usually appear some two weeks ahead of the herbaceous class, are most remarkable for their immense size and gorgeous colorings. Splendid for grouping or for specimen plants on lawns. While a hardy plant, it will be found desirable to give it some protection in very cold latitudes. All shoots springing from the base should be rubbed off. We offer any color desired, our choice of varieties only, at \$1.25 each.

OFFICINALIS SECTION

These are earlier bloomers than the Chinensis section. They are the old May-flowering Peonies of our mothers' gardens. Price, 50 cents each; the three for \$1.25.

OFFICINALIS RUBRA (Fl. Pl.)—The old-fashioned early deep crimson variety of our grandmothers' gardens.

OFFICINALIS ROSEA (Fl. Pl.)—Very large, well-formed bloom; color deep pink; very brilliant and effective.

OFFICINALIS ALBA (Mutabilis)—White, striped with pink.

Remember That so long as we can ship Peonies safely during the spring months we will do so; after it becomes too late we will file your order for them and ship in the fall time.

BEAUTIFUL HOUSE FERNS

To Cheer Your Home During Winter

There are no plants grown that are more desirable for the house than the following fine decorative Ferns. They are easily grown, free from insects and disease, and thrive well in the ordinary temperature of the living room. See that the plants have plenty of drainage and are kept well watered; never let dry out for any length of time. Every one of these Nephrolepis Ferns is entirely distinct in every way. That we are headquarters for Ferns is evidenced by the choice assortment that we offer. No other firm offers so many distinct and choice varieties. Try us for Ferns.

THE "WANNAMAHER FERN," *Nephrolepis John Wannamaker*—A new Fern of wonderful beauty. Long, narrow, gracefully drooping fronds. It is not so compact as Scholzei, and, therefore, is a very airy and graceful Fern, and very durable in the house. A rapid grower; quite distinct from other ferns. **Fine young plants, 25 cents; strong plants, 75 cents.**

THE "BIG FOUR FERN," *Nephrolepis Splendida*—This is the most wonderful Fern of them all; it originated with G. & R., and is now offered for the first time. It combines the good qualities of the four most popular sorts. It has the grace of a "Boston," the wavy effect of a "Roosevelt," the fluffy effect of an "Ostrich Plume," and the uniqueness of a "Fish Tail." Some fronds will be straight "Boston," others will be true "Roosevelt," in others the ends of the pinnae will be the feathery "Ostrich Plume," while in others the ends of the pinnae will be the genuine "Fish Tail." Then again some fronds will have in a marked degree all of these desirable traits, forming a combination without parallel among Ferns. It well deserves the name of "Big Four Fern." Everyone who sees it goes "daffy" about it. This is without question the most splendid of all the Nephrolepis. Be sure and try it. **Fine young plants, 15 cents; strong plants, 50 cents.**

THE "PHILADELPHIA LACE FERN," *Nephrolepis Elegantissima*—The small size pinnae, or leaflets, are subdivided into perfect miniature fronds; the side pinnae stand at right angles to the midrib of the fronds, on edge instead of flat, giving both sides of the main frond the same beautiful appearance. It is impossible to conceive of the beauty and grace of this wonderful Fern from description. **Fine young plants, 15 cents; strong plants, 50 cents.**



"Teddy Junior" Fern.

THE "TEDDY JUNIOR FERN," *Nephrolepis Teddy Junior*—"Teddy Junior," the Fern for every household. This grand Fern was introduced recently by G. & R. The fronds are broad and beautifully tapered from base to tip; they droop just enough to make a shapely, graceful plant, permitting it to finish with a fine full center and perfect symmetrical spread. The pinnae are distinctly undulated, giving the fronds an attractive wavy appearance, which adds materially to their charming decorative effect. "Teddy Junior" will produce about four times more fronds than any other Fern ever introduced, finishing with fifty to sixty fronds in a four-inch pot. **Fine young plants, 15 cents; strong plants, 50 cents.**



Fronds of the "Roosevelt Fern."

THE "ROOSEVELT FERN," *Nephrolepis Roosevelt*—It is our good fortune and great pleasure to offer this wonderful new Fern, having introduced it in 1910. In this short time it stands second in popularity of all the Ferns, and will soon be more popular than even the old favorite Boston Fern. In general characteristics it resembles the world-famous Boston Fern, but it will sweep that Fern from the boards for two reasons; it produces many more fronds than the Boston, thus making a bushier, handsomer plant; then the pinnae are beautifully undulated, giving the "Roosevelt" a pronounced wavy effect seen in no other Fern; as the plant ages this effect becomes quite distinct. A charming and most notable variety. **Fine young plants, 20 cents; strong plants, 65 cents.**

THE "GOLD MEDAL FERN," *Nephrolepis Piersonii*—This Fern received a gold medal from the Society of American Florists and Ornamental Horticulturists, and is the only gold medal ever awarded by them for any plant whatsoever. An entirely new form of the Boston Fern. The pinnae subdivide, making miniature fronds which are superimposed on the main fronds, looking as if two or even three were condensed into one, giving the plant a graceful, feathery and plummy effect. **Fine young plants, 15 cents; strong plants, 50 cents.**

THE "CRESTED FERN," *Nephrolepis Scholzei*—The fronds are crested and stand erect, with a graceful arch, forming a plant of ideal shape, and they never break down, giving the plant a ragged appearance, as is so often the case with other plumed forms; furthermore, the loose, elegant arrangement of the fronds, allowing a free circulation of air through the foliage, prevents the center of even the largest specimen from becoming defective or yellow. The smallest salable plants perfectly express the type, and in every size are models of beauty for table decorations. **Fine young plants 15 cents; large plants, 50 cents.**

THE "OSTRICH PLUME FERN," *Nephrolepis Whitmanii*—A great Fern. In fact, it is a plant that appeals to everyone, and on that account will prove a much more valuable and profitable plant than other Ferns of this class. Everyone who has seen it is charmed with it. As someone has expressed it, "There is nothing like the Ostrich Plume Fern in cultivation. In decorative effect it so far outdistances the original variety that there is positively no comparison to be made. We consider it the most valuable novelty that has been introduced in many, many years." It has taken gold medals wherever shown. **Fine young plants, 20 cents; strong plants, 65 cents.**

THE "NEWPORT FERN," *Nephrolepis Scottii*—Of much dwarfer and bushier growth than the Boston Fern. The fronds droop gracefully, and are not as long and heavy as the Boston. It is a rapid grower, and to see it in all stages of growth from a runner in the bench to a fourteen-inch pot specimen will convince you that it will be in great demand as a house Fern. This has always been a favorite variety. **Fine young plants, 15 cents; strong plants, 50 cents.**

THE "FLUFFY RUFFLES FERN," *Nephrolepis Superbissima*—This new Fern is quite different from all other Ferns. Its distinguishing characteristics are its dark green foliage, darker than any other Fern, its dense growth, much more compact, and its irregular shaped fronds, which give it the name of "Fluffy Ruffles Fern." The fronds are very heavily imbricated, the pinnae overlapping, and are so formed as to resemble miniature Ferns, giving it the appearance of a Fern within a Fern. The plant is very sturdy in its habit and the fronds firm and rigid, never break down, so that it will stand more knocking around than any other Fern. **Fine young plants, 25 cents; strong plants, 75 cents.**

THE "FISH TAIL FERN," *Nephrolepis Davalloides Furcans*—This is a grand Fern entirely distinct from any of the other varieties of *Nephrolepis*. Throughout the South and especially at New Orleans this Fern takes precedence over all others. The ends of the pinnae are so formed as to resemble a fish tail, giving the fronds a crested appearance, very effective. It grows into the most shapely plant of any of the *Nephrolepis*. Grand for house culture. **Fine young plants, 20 cents; strong plants, 65 cents.**

THE "BABY'S BREATH FERN," *Nephrolepis Goodii*—This has the finest foliage of all the Ferns. It is so delicate that a lady on seeing it exclaimed, "Call it the Baby's Breath Fern, as it is so dainty in texture that a baby's breath would set its fluffy foliage in motion." The fronds are very fine and filmy, on which account it has been called by some the Lace Fern. It is an improved variety and the best of its type. Nothing is daintier or more exquisite than well-grown specimens in any size. Our reputation for it that no Fern in existence can compare with "Baby's Breath" in fluffiness. **Fine young plants, 20 cents; strong plants, 65 cents.**

THE "BOSTON FERN," *Nephrolepis Bostoniensis*—In the vicinity of Boston, no other plant is so extensively used as this graceful *Nephrolepis*, which differs from the ordinary Sword Fern in having much longer fronds, which frequently attain a length of six feet. These arch and droop over very gracefully, on account of which it is frequently called the Fountain Fern. This drooping habit makes it an excellent plant to grow as a single specimen on a table or pedestal. This Fern should not be compared with the Ostrich Plume Fern, as they are of an entirely different growth; both have their place and both are beautiful and desirable. **Fine young plants, 20 cents; strong plants, 65 cents.**

THE "PARLOR FERN," *Nephrolepis Whitmanii Compacta*—This is a condensed form of the "Ostrich Plume" Fern, with valuable characteristics added which are not evident in the parent, the pinnae subdividing, making miniature fronds which are superimposed on the main fronds, looking as if two or more were condensed into one. Graceful beyond description. **Fine young plants, 15 cents; strong plants, 50 cents.**

THE "OLD ORIGINAL SWORD FERN," *Nephrolepis Exaltata*—This is the "old original Sword Fern," the "daddy" of them all, the one plant from which all the *Nephrolepis* we offer sprang. It is entirely different from any of its progeny, having narrow fronds that are long and of very erect growth. For this reason it is more largely used as a centerpiece in vases than are any of its descendants. **Fine young plants, 15 cents; strong plants, 50 cents.**

Special Offer: The Fifteen Beautiful Ferns as named, costing \$2.70, for \$2.25. The Fifteen Ferns in strong plants, costing \$8.75, for \$8.00.

Dwarf Ferns for Fern Dishes

We have selected a few of the hardiest and most satisfactory varieties for filling Fern dishes, than which there is no prettier table decoration for winter. **Price, 10 cents each, or we will send six distinct Dwarf Ferns for 50 cents. We have six other distinct Dwarf Ferns. We will send the twelve for 85 cents. These will make a fine full Fern dish for the table.**

ADIANTUM FORMOSUM—The popular Maiden Hair Fern; very beautiful and graceful.

ASPIDIUM TSUSSIMENSE—The most valuable for Fern dishes; of strong, but dwarf and graceful habit, of good color and of the best keeping qualities. A clean, good grower and very ornamental.

PTERIS ADANTOIDES—One of the finest Ferns. Has very decorative and handsome fronds.

CYRTOMIUM FALCATUM, or HOLLY FERN—A beautiful and rapidly growing Fern that succeeds exceedingly well, small plants making fine specimens in a short time. Fronds resemble branches of holly, from which it takes its name.

PTERIS CRETICA ALBO-LINEATA—A very pretty and useful variegated variety, with silver markings.

PTERIS WINSETTI—A beautiful low-growing Fern, suitable for table dishes.



Dwarf Ferns in Table Dish.

Hardy Perennial Phlox

This is one of the most easily grown hardy perennials, and the large number of beautiful varieties now offered make it especially desirable. These noble flowers are not only beautiful as individuals, but the cheerful appearance of our gardens during the summer and autumn months is much indebted to them. They succeed in any position or soil, and can be used to advantage either as single specimens in the mixed border or as large clumps or beds on the lawn. To produce the best results, however, they should have a rich, deep and rather moist soil, and let each clump have a space of from two to three feet in which to develop. They will continue to thrive for several years with little attention, as is attested by the fine clumps about old homesteads. The ease with which they are cultivated, their entire hardiness and the extended time of blooming, combined with the varied and beautiful coloring, make them especially valuable for garden planting. The Perennial Phlox usually commence to bloom in early summer, and are brilliant with color until after several frosts have come. They are admirably adapted for cemetery planting, also for a low hedge or screen to hide old fences and unsightly objects. Do not fail to plant Phlox in the fall, any time from September until the ground is frozen.

Price, 12c each; five for 50c. The entire set of Thirty Distinct Standard Varieties of Hardy Phlox for \$2.60.

STANDARD LIST OF PHLOX

ALCESTE—Deep violet, shading almost to blue.

ATHIS—Deep, clear salmon. Some claim this to be the showiest variety in cultivation.

BEAUTY—Delicate silvery-pink; a most beautiful sort.

BERANGER—Ground color white, delicately suffused with rosy-pink, and distinct eye of same color; exquisite.

BRIDESMAID—Pure white, clear carmine eye; blooms in large, round heads; attractive.

CONSUL H. FROST—Deep rose color; large white eye.

DANTON—Scarlet, pure red eye.

ECLAIREUR—Clear rosy-magenta with large lighter halo; large florets; magnificent bedder.

ESCLARMONDE—Clear rosy-lilac, deeper eye, exquisitely rayed and shaded.

GENERAL VON HEUTZE—Immense trusses of very large flowers; color of the most brilliant salmon-red, with white center; simply grand.

HENRY MARCEL—Dark violet-rose, white eye; distinct.

HENRY MURGER—Enormous pure white flowers, with very large, showy, deep carmine eye or center; fine florets and trusses; extra.

HERVOR—Carmine-rose with pure white center.

INDEPENDENCE—An excellent large-flowering early pure white; none better.

JEANNE d'ARC—Pure snow white, large panicles; very sweet.

KOSSUTH—Rich deep purple. Extra fine.

LA PERLE DU NORD—Pure white, large, deep, distinct red eye; extra fine.

LE MAHDI—Dark violet-purple.

LOTHAIR—Clear, even carmine, deep crimson eye.

MADAME PAUL DUTRE—Delicate lilac-rose reminding one of some of the beautiful soft pink Orchids.



Phlox planted in a hardy border.

MRS. JENKINS—A grand tall early white for massing.

PANTHEON—Large, clear, deep, bright pink with faint halo; a charming variety.

PEACHBLOW—Delicate peachblow-pink shading to almost white; large trusses; elegant.

PHARON—A beautiful lavender.

ROSENBERG—Bright reddish-violet with blood-red eye; large trusses and individual flower as large as a silver dollar.

RYNSTROM—Of a Paul Neyron pink color; excellent.

RICHARD WALLACE—Pure white, with violet-rose eye; large flowers in immense panicles. Too much cannot be said of this variety.

R. P. STRUTHERS—In our estimation the very best Phlox grown today—it has no faults. Color clear cherry-red, suffused with salmon shades; deep red eye; fine large truss. The color is so clear and clean that each individual floret stands out as distinct as a cameo.

SIEBOLD—Bright vermilion-red overlaid with orange-scarlet, crimson-red eye; will please everybody.

WIDAR—Violet-blue with pure white eye.

Recent Introductions and Those That Are Scarce

Some wonderful creations in these newest Phlox. They will certainly be a revelation to you. Price, 20 cents each. The entire Eleven Scarce Phlox for \$2.00.

ASIA—Lilac-rose with brilliant carmine eye.

B. COMTE—Brilliant French purple, with crimson-carmine shadings.

ELIZABETH CAMPBELL—Very bright salmon-pink, with lighter shadings and dark crimson eye. An entirely new and much wanted shade in Phlox.

GRUPPENKONIGIN—Pure flesh colored rose with carmine eye. Extra fine.

JULES CAMBON—Clear magenta with large distinct white star in center of each floret; superlatively rich and fine.

LE PROPHETE—Violet-blue, brown center.

MOZART—Deep carmine center shading to white at edge of flower.

MISS LINGARD—Pearly-white flower, with a very faint pink eye; very remarkable bloomer, producing two to three crops of flowers during the season. Indispensable as a cut flower for florists' use.

PROFESSOR VIRCHOW—Bright carmine, overlaid with orange-scarlet.

RUBUS—A parti-colored variety, rosy-red, shading to white.

VON HOCHBERG—Extra large beautifully formed trusses, the ideal crimson Phlox; richest of its color.

Special Offer THE ENTIRE FORTY-ONE VARIETIES OF PHLOX OFFERED ON THIS PAGE, COSTING \$5.70, SENT FOR ONLY \$4.50.

BEAUTIFUL CANNAS

Cannas are called the poor man's Orchid because one may possess a perfect riot of color in his yard or garden for the minimum of both outlay and labor. They grow rapidly and bloom luxuriantly throughout a long season, requiring merely ordinary hoeing and weeding, and they always respond to plenty of water. Soak the ground thoroughly. Planted in beds of any formal shape, in rows or in front of porches and foundation walls, their rich, tropical foliage and gaudy bloom will repay their care and the insignificant trouble of winter storage.

NOVELTIES IN CANNAS AND THOSE THAT ARE RARE

EUREKA—This is the only white flowering Canna that ever amounted to anything. It is a good grower, free bloomer and pure white in color; large flowers and truss. **35 cents.**

FIREBIRD—This is by all means the very best red flowered Canna; gigantic trusses of immense flowers with petals two and one-half inches to three inches and over across. The color is a clear, glistening scarlet without streaks or spots of any kind. Don't fail to try it. 4 feet. **35 cents.**

HUNGARIA—This Canna catches the eye insistently and demands attention. The petals are round and waxy, made up into big round trusses. Its color forcibly suggests the well-known "Paul Neyron" Rose, and is unquestionably the most attractive and fascinating pink Canna ever produced. 3½ feet. **30 cents.**

KATE F. DEEMER—The grand flowers open a rich oriole-yellow, which gradually gives place to a turkey-red in throat of the flower, this in striking contrast with the rest of the blossom, which turns almost white. Thus two colors of flowers will be on the same stalk at one time. This makes a fascinating combination, and is the most unusual of all Cannas. 4 feet. **25 cents.**

MRS. ALFRED F. CONRAD—A most remarkable variety, with exquisite salmon-pink flowers of largest size in erect and abundantly furnished heads. So freely produced as to keep up a superb showing of its fine bloom for months above the rich green foliage; extra fine. 4 feet. **30 cents.**

OLYMPIC—A captivating shade of orient-red with center flamed a lighter shade as though overcast with a sheen of silver; immense heads of gigantic flowers. Superb. 4 feet. **35 cents.**

PANAMA—The color is an attractive rich orange-red, with a well-defined edge of bright golden-yellow. The flowers are very large and the immense spread of the individual blooms coupled with its early free flowering habit makes this Canna noteworthy. **30 cents.**

QUEEN HELEN—Immense flowers that are as large as the Orchid-flowering Cannas. Color golden-yellow evenly and distinctly spotted red. This Canna ranks right up with King Humbert. We have no hesitancy in saying there is no better Canna grown. 4½ feet. **35 cents.**

ROSEA GIGANTEA—Extra large flowers, borne in such great abundance that the mass of color is truly amazing; a deep, rich rose, almost coral-carmine; soft and lovely; one of the most beautiful Cannas grown. 4 feet. **30 cents.**

SPECIAL—One Each of the Nine Newer Cannas, Costing \$2.85, Sent for Only \$2.35.

STANDARD VARIETIES OF CANNAS

15 Cents Each, Except Where Noted.

CALIFORNIA—A pure rich orange or old gold. No other Canna color like it. 4 feet.

CRIMSON BEDDER—Dazzling crimson-scarlet, well displayed above the foliage. A conspicuous bedder. 3½ feet.

DAVID HARUM—Bronze foliage, bright vermilion-scarlet, mottled with deep red, and with crinkly-edged petals. 3½ feet.

DUKE OF MARLBORO—One of the darkest flowered Cannas grown; rich crimson-maroon. 4 feet.

FLORENCE VAUGHAN—Rich golden-yellow, thickly peppered with bright red spots. 3½ feet.

GUSTAVE GUMPFER—Rich golden-yellow. Extra fine. **20 cents.**

GLADIATOR—A very showy bedding Canna, with large flowers of brassy-yellow, speckled in bright red. The long center petal and lower petals are a solid dark red, making a most striking contrast to the predominating yellow. 3½ feet. **20 cents.**

JEAN TISSOT—A rich shade of scarlet in large trusses. One of the brightest and best. 4 feet.

KING HUMBERT—In this grand Canna we have a combination of the highest type of flower with the finest bronze foliage. It has flowers as large as the Orchid-flowering Cannas. Six inches across, in trusses of gigantic size; of a brilliant orange-scarlet with bright red markings. The foliage is broad and massive, of a rich, coppery-bronze; bold and effective. "King Humbert" is the one ideal Canna. 4½ feet. **20 cents.**

MEPHISTO—A brilliant deep, rich red; a wonderfully satisfying Canna. 3½ feet. **20 cents.**

METEOR—Immense trusses of large, rounded flowers, well displayed above the massive foliage; brilliant crimson. Flowers keep well and are self-cleaning. 4 feet. **25 cents.**

PILLAR OF FIRE—Bright crimson-scarlet. Borne in erect spikes like blazing torches; fine. 6 feet.

RICHARD WALLACE—A light shade of canary-yellow, almost an ecru, with delicate flecks of red; a lovely Canna. 4 feet.

SECRETAIRE CHABANNE—A distinct and pleasing salmon; a fine bedder. 3½ feet.

WEST VIRGINIA—Intense crimson-scarlet with broad yellow edge. 3½ feet.

SPECIAL—The Fifteen Standard Cannas, Costing \$2.55, for \$2.10.



Canna Florence Vaughan.

GIANT ORCHID-FLOWERING CANNAS

A distinct race of Cannas noted for their immense Orchid-like flowers, often measuring six to seven inches across. The individual blooms of the Orchid-flowering Cannas are much larger than in the Truss-flowering Cannas. All of the Orchid-flowering Cannas are green leaved except New York and Wyoming. **Price, 20 cents each.**

ALLEMANIA—Ground color yellow, heavily dotted and overlaid with blood-orange. 5 feet.
AUSTRIA—Pure yellow with crimson markings in throat. A beautiful shade; the color of light. 4½ ft.
INDIANA—Glistening golden-orange, lightened by flecks of old gold and daintily flecked and penciled with deep rose. Single blossoms often seven inches across. 5½ feet.

PENNSYLVANIA—Intense vermilion-scarlet or pure red. The flowers are immense, often seven inches across. 5½ feet.

UNCLE SAM—The most stately of all Cannas; bears three or four enormous bunches of brilliant orange-scarlet flowers on each stalk. Received an award of merit from the Royal Horticultural Society of England. 6 feet.

SPECIAL—The Five Giant Orchid Cannas, Costing 75 Cents, for Only 65 Cents.

GREAT BARGAIN IN CANNAS

The entire Twenty-Nine Varieties of Cannas we offer in this catalog, costing \$6.15, for only \$4.50.

DOUBLE GERANIUMS The Best There Are

12 Cents Each, Except Where Noted; Any Five Priced at 12 Cents for 50 Cents.

ALPHONSE RICARD—A most beautiful shade of bright vermilion; large flowers and enormous trusses; a grand variety.

AMERICAN BEAUTY—(New.) Same color as the famous American Beauty Rose. A very free bloomer. 15 cents.

BEAUTE POITEVINE—Beautiful shade of shrimp-pink, gradually shading to white; a universal favorite.

COMTESSE DE HARCOURT—Beautiful florets and enormous trusses of pure white. Stands the sun well.

E. H. TREGO—A beautiful shade of dazzling scarlet with a pleasing soft, velvety finish on a saffron ground. Excellent. The trusses are so freely produced as to nearly conceal the foliage.

HELEN MICHELL—(New.) The clearest possible shade of scarlet, borne on gigantic trusses. 15 cents.

HETERANTHE, or Double General Grant—Color of the flowers is a light vermilion-red of a most pleasing shade. The flowers are absolutely perfect in shape, contour and make-up, trusses exceptionally large and borne in immense spherical balls, often measuring eight inches in diameter. Is perfectly reliable as a bedding Geranium of the highest merit.

JEAN OBERLE—A most beautiful peach-pink color shading to hydrangea-pink. Superb. 15 cents.

JEAN VIAUD—This is the best large-flowering double pink Geranium in cultivation. The color is the richest deep pink, shading near the base of the petals to light pink, the base of the upper petals creamy-white.

JOHN DOYLE—Rich deep scarlet, exceptionally bright and effective.

LA FAVORITE—In this Geranium we believe we have the finest double white Geranium in cultivation. The flowers are borne in large trusses of the purest snow-white, retaining this pure whiteness even in the height of summer, and for winter blooming they are all that can be desired. Do not fail to add this charming variety to your collection.

MADAME BARNEY—A profuse bloomer; florets of enormous size; color a deep, pure pink. A perfect bedder. 15 cents.

MADAME JAULIN—A continual bloomer; color day-break pink, shading to a delicate peach-pink; enormous trusses.

MADAME LANDRY—A distinct salmon-pink with a slight scarlet shading. Enormous trusses and florets borne on long stems.

MARQUIS DE CASTELLANE—This is a deep solferino in color; has a splendid habit, and the color is decidedly unique and bright for a Geranium. An exceptionally striking variety.

MARQUIS DE MONTMART—This is known as the Blue Geranium; it is more strictly speaking a rich purple; a striking color. 15 cents.

MISS FRANCES PERKINS—A constant bloomer of a charming deep rose-pink color, with a distinct white throat; stands the climate well.

MRS. LAWRENCE—This is one of the finest Geraniums. The color is an artistic shade of bright satiny salmon-pink, slightly tinged white. 15 cts.

RED WING—Deep cardinal-red with a soft velvety sheen, unusually attractive. 15 cents.

S. A. NUTT—This is the darkest and richest Geranium known. It is very bright, dark, deep, rich, velvety maroon; an excellent bedder and a perfect pot plant. One that must find its way into every collection.

Single Geraniums

None Better than These Varieties

15 cents each. Will send four Single Geraniums, our selection of varieties, for 50 cents.

ALBION—One of the finest single whites. Pure in color; immense in size; circular form.

JACQUERIE—A most beautiful shade of deep carmine-red; immense trusses; fine bedder.

LAUBE—Enormous sized trusses, large, round florets, pure snow-white, retaining its pureness the entire season.

MADAME MOSNAY—A magnificent shade of red. Upper petals shaded violet to white center; unsurpassed.

MADMOISELLE ANASTASIE LECADRE—Rich crimson carmine-lake, shading through a maculated effect to a pure white center. Extra fine.

MRS. E. G. HILL—A profuse bloomer of a soft light salmon. Each petal bordered with rose-salmon. Exquisite.

TIFFIN—Of a very effective shade of rich glowing scarlet.

Sweet-Scented Geraniums

12 cents each; three for 30 cents.

LEMON—The foliage is pronouncedly lemon-scented.

NUTMEG—Foliage has true nutmeg fragrance.

ROSE—The famous sweet Rose-scented Geranium; very fragrant.

Ivy-Leaved Geraniums

These have a trailing habit, and are extra fine for basket, vase or porch-box work. 15 cents each; two for 25 cents; the five for 60 cents.

CAESAR FRANK—Color is a magnificent shade of soft rich crimson, with an exquisite shading of tender rose at the base of petals.

INCOMPARABLE—A glorious bright red.

JOAN D'ARC—Flowers perfectly double; color pure snow-white.

MRS. BANKS—Flowers large, semi-double; color a pleasing shade of bluish-white, upper petals feathered Neyron pink. Exceptionally strong and vigorous.

RYCROFT'S SURPRISE—Charming bright clear pink.

Pansy Geranium, Mrs. Loyal A Wonderful Plant

This new and wonderful Pansy Geranium is of the easiest growth, dwarf in habit, and literally covered with flowers all the time; and as it requires little or no attention, it is invaluable as a window plant. The coloring and markings of the flowers are most extraordinary—light pink, white, dark purple, black, etc., almost rivalling the Pansy in uniqueness of flower. It is this combination of coloring which obtained for it the popular name of Pansy Geranium. **Strong plants, ready to bloom, 20 cents each; three for 50 cents.**



Pansy Geranium.

Pelargonium, or Lady Washington Geraniums

The grandest of all flowering plants; do not resemble the common Geraniums in any particular, neither in foliage nor flower; more beautiful in every way. We here offer twenty distinct sorts, every one entirely different in color and every one a beauty. The Lady Washington Geraniums are the handsomest of all flowers—once seen, never forgotten.

Easter Greeting, or Ever-Blooming Set

These are the very latest varieties and are known as the Ever-blooming Lady Washingtons. Do not fail to try these grand varieties.

Price, 35 cents each; any four for \$1.10.
The Nine Novelties for \$2.25.

DOROTHY—It is a perpetual blooming variety, usually commencing to bloom in December or January, and continuing throughout the spring and summer. The throat and edges of the petals are pure white, each shaded toward the center with rich carmine-pink, with a glowing crimson blotch on each. We have always been unable to supply the demand, but now we have a fine stock of plants to offer.

EASTER GREETING—This new ever-blooming Pelargonium was shown at the Mannheim horticultural exhibition in Germany. Planted out as a bedding plant and bloomed continually until late in the fall. It will prove the forerunner of a new race of ever-blooming kinds, as it rivals the Orchids in beauty. The following description is from the German introducer, Carl Faiss: "This new species is the earliest of all Pelargoniums, with enormous florets and clusters, having light green foliage and of dwarf, robust growth. It blooms from March until fall. The florets are fiery amaranth-red, with five large, regular shaped spots. The first and only kind to bloom as well bedded out as in pots, and to do so all summer."

GARDENER'S JOY—The ground color is apple-blossom pink, the two upper petals have blotches of carbon-brown, the florets are three and one-half inches in diameter and are joined to enormous clusters which rise above the beautiful foliage and remind one of a Rhododendron cluster. It is of a half dwarf nature and very sturdy. On account of its rapid, luxuriant growth it is a very profitable market variety.

GERMAN GLORY—This splendid novelty is quite remountant, florets and cluster very large; ground color, Cattleya-blue, very much like the Cattleya Orchid. The upper petals contain two large purple magenta-red spots, distinctly veined. An exceedingly beautiful and entirely new color in Pelargoniums. This kind has a very robust growth.

LUCY BECKER—This grand novelty is a sport of Easter Greeting, and is like it in everything but color, which is a rosy-pink. It is if anything even more free in bloom.

PRINCE BISMARCK—Immensely large flowers, strongly crimped, of fine shade, with from six to ten petals; color rich purple with velvety black blotches. Remarkably robust habit. The large clusters rise gracefully above the beautiful foliage. The blooming plant with its enormous flowers makes a striking impression.

SWABIAN MAID—This new sport of Easter Greeting has large, reddish-carmine flowers with five very regular black blotches bordered with purplish-carmine. Very effective coloring. Its habit, foliage, robust growth, and ever-blooming qualities are like its parent Easter Greeting, and can therefore be grown either as a pot plant or bedded out.

WOLFGANG GOETHE—Florets large and slightly crimped, ground color reddish-carmine; with five well-defined violet-black spots. Robust grower.

WURTEMBERGIA—Easter Greeting sport. Medium size florets of a bright carmine, with large velvety, sharply defined blotches. Has all the good qualities of its parent. Equally valuable bedded out or as a pot plant.

The Standard Set of Lady Washington Geraniums

The Standard Set of Pelargoniums, 25 cents each; any Six for \$1.25; the set of Twelve for \$2.75.

AMERICAN BELLE—A lovely American Beauty Rose shade with large black blotch.

BRIDEGROOM—Rosy-blush, with maroon shading. Beautiful crimped flowers.

CAPTAIN RAIKES—A grand ruffled or fringed variety; color bright red with lighter center with heavy maroon blotches on upper petals.

EMANUEL LIAS—Beautifully mottled rose and white, each petal elegantly fringed or crimped.

GLORIOSA—Beautiful pearly-white petals; solid blotch of lavender on upper petal.

LORD MAYOR TRELOAR—Bright rosy-red with a very effective maroon blotch on the upper petals; edge of petals lighter color, center of flower white.

MADAME THIBAUT (The New Double Pink)—The flowers are three inches in diameter, perfectly

double, of the brightest pure pink, beautifully ruffled edges; very free in bloom.

MADAME VIBERT—Blackish-maroon, bordered fiery-red, each petal edged with deep magenta.

MRS. ROBERT SANDIFORD (The New Double White)—Flowers are three inches across, of the purest snow-white and perfectly double and very free in bloom. You cannot imagine anything prettier.

SANDIFORD'S BEST—A beautiful shade of pink surrounded by a deep band of purest white, with a large white throat.

SPRINGBOK—Light scarlet, immense white center; large trusses, free flowering; an excellent variety.

TOMMY DODD—Immense showy trusses; lower petals soft blush, upper petals maroon and crimson.

Special Offer

THE ABOVE TWENTY-ONE CHOICE VARIETIES OF LADY WASHINGTON GERANIUMS, COSTING \$5.10, SENT FOR ONLY \$3.75. A GREAT BARGAIN.

Our Grand Garden Dahlias

No garden is complete without a show of these brilliant and stately autumn flowers, and nothing gives greater return for so little money and care. We offer dry bulbs or tubers, but if stock of these becomes exhausted, will send started plants. We grow and sell fifteen acres of Dahlias each year.

CACTUS DAHLIAS



Cactus Dahlia Flora.

So-called from their resemblance to Cactus flowers. They are characterized by long, narrow, pointed, tubular and twisted petals of graded lengths, giving the flowers a striking and attractive appearance. Grand for cut flowers. **Except where noted, 20 cents each. The entire set of seventeen Cactus Dahlias, costing \$4.95, for \$4.25.**

AMOS PERRY—The best bright scarlet Cactus to date. Color purest flaming scarlet, with long, narrow, twisted petals of irregular formation. The blooms are borne well above the foliage in the utmost profusion. Certainly a beauty.

AURORA—Very free flowering; reddish-apricot, suffused with flesh-pink, shading lighter at the tips. **25 cents.**

CHARLES CLAYTON—The strongest words of praise are not extravagant when applied to this wonderful new Cactus. It is the ideal in color, form, length of stem and general good habits, beyond which it would seem little could be hoped for. The color is a most intense crimson, so vivid as to dazzle the eye; superb.

COUNTESS OF LONSDALE—For perfection of bloom, erectness of stem, abundance of flower, this variety has never yet been equaled. On several of the plants we have counted over 150 perfect blooms on one plant. Is there any other garden flower that can equal it? The color is a rich salmon-pink, tinted apricot.

DAINTY—(New.) Lemon-yellow at center, tipped rose-pink. Very delicate. **25 cents.**

FLORA—The ideal white for cut flowers. Pure color and extremely free blooming. **25 cents.**

FLORADORA—Deep dark, rich wine-crimson, splendid shaped flowers on long, upright, wiry stems.

GOLDEN GATE—(New.) We claim for this that it is the finest, largest and best blooming Dahlia in existence. A beautiful dazzling golden-yellow. Will delight everyone. Be sure and try it. **50 cents.**

RHEINKONIG (Translated the Rhine King)—Pure snow-white flowers of splendid form; five inches and over in diameter, of fine lasting qualities when cut. A fine garden Dahlia. **25 cents.**

RUTH FORBES—(New.) A beautiful clear pink without shading; the nearest approach to A. D. Livoni in color yet obtained; superb. **35 cents.**

SPRINGFIELD—A new Dahlia of our own introduction. It is identical with Countess of Lonsdale except in two essentials. It has a darker stem and the flowers instead of being a salmon-pink as in Lonsdale, in Springfield are a rich amaranthine-red. Its beauty cannot be described. No Dahlia blooms freer, no Dahlia is as pretty as Springfield. It lasts longer cut than any Dahlia we know. **35 cents.**

J. H. JACKSON—This is without doubt the finest dark Cactus Dahlia. Its velvety black crimson-maroon shade is very striking. Large and perfect.

KALIF—(New.) The best red Cactus to date. O. K. in every way. A wonder. **50 cents.**

KRIEMHILDE—A most popular cut flower variety. Color a brilliant pink, shading to white in the center.

MRS. WARNAAR—(New.) Creamy-white, suffused with pink; large, elegant flowers. **50 cents.**

PRINCE OF YELLOWS—One of the best canary-yellows for cutting.

QUEEN OF HEARTS—(New.) The best white Cactus ever introduced. Pure white shading to lemon-yellow at base of the petals; very free bloomer. **35 cents.**

DECORATIVE DAHLIAS

These come next to the Cactus as a cut flower. They are also very showy in the garden, being unusually free bloomers. They are more formal in make-up than the Cactus Dahlias, but not so formal as the Show varieties, being a happy medium between the two. **Except where noted, 20 cents each. The entire set of sixteen Decorative Dahlias, costing \$4.25, for \$3.75.**

BLACK BEAUTY—Deep velvety maroon, the blackest of all Dahlias.

DELICE—Its beautiful soft yet lively color a glowing rose-pink, together with its shape, makes it one of the prettiest and most valuable of all Dahlias. **25 cents.**

FRANK L. BASSETT—Color bright royal purple, shading to lavender-blue, an extremely early and profuse bloomer.

GOLDEN WEDDING—A giant flower. A deep golden-yellow, the same as found in the Golden Wedding Chrysanthemum. A gorgeous variety for the garden or for cut flowers. **25 cts.**

HORTULANUS FIET—(New.) Salmon-pink, yellowish center; as large as Souv. de G. Doazon. Has taken many first prizes. **50 cents.**

JACK ROSE—A magnificent flower with perfect form. Color rich crimson-red with maroon shadings. Named for its counterpart among Roses, the famous "General Jack."

MADAME A. LUMIERE—Ground color white, suffused towards the ends of the petals with red, the tips pointed with bright violet-red.

MATCHLESS—Deep crimson, of large size; an early and late bloomer. This we consider one of the best ten Dahlias. Very showy in the garden.



Dahlia Floradora.

OUR GRAND GARDEN DAHLIAS—Concluded

MINNIE BURGLE—(New.) The best scarlet-red Decorative Dahlia ever introduced. This wonderful Dahlia is a California introduction and is the best of its color. The form is perfect decorative type, the petals being broad and flat; it has a perfectly full center and is a Dahlia that can be grown to an immense size with ordinary treatment. It was very prominent at the Panama-Pacific International Exposition where it was grown in masses around the Horticultural building. It shows finely under artificial light and for cutting purposes is unsurpassed. We were fortunate in securing a stock of the variety, and can highly recommend it to our customers. **50 cents.**

MONT BLANC—(New.) An early free continuous flowering creamy-white; large blooms on good stems. One of the most important cut flower kinds. **35 cents.**

MRS. J. GARDNER CASSATT—A new rose-pink Dahlia that has attracted a great attention. The flowers are of immense size. Said by many to be the finest of all deep pink Dahlias. **25 cents.**

PERLE DE OR—A splendid white variety particularly valuable for cutting. Extra.

PRINCESS JULIANA—(New.) Pure white, free flowering, the best white for cutting; prize winner. **35 cents.**

SOUVENIR DE GUSTAVE DOAZON—This is the largest of all Dahlias. A lovely shade of orange-red. A veritable giant among flowers.

WILLIAM AGNEW—Intense glistening crimson-scarlet, of large size and gracefully recurring form. The most popular standard red.

ZULU—The blackest of all Dahlias.

SHOW AND FANCY DAHLIAS

These are the old-fashioned Dahlias of our mothers' gardens. Perfect in shape and outline. Except where noted, **20 cents each.** The entire set of twelve Show or Fancy Dahlias, costing **\$2.55,** for **\$2.40.**

A. D. LIVONI—A splendid clear pink, beautifully quilled.

ARABELLA—Primrose-yellow, tipped and shaded old rose and lavender; very fine.



Show Dahlia, Dorothy Peacock.

CUBAN GIANT—Flowers of great size, measuring six inches across. Color dark, glowing crimson, shaded maroon. Magnificent. **25 cents.**

DOROTHY PEACOCK—The most exquisitely beautiful bright sea-shell pink Dahlia on earth. The flowers are of fine form, while the color is that beautiful live, clear pink that appeals to everyone. Whether as a plant in the garden or for cut flowers, this new Dahlia has been the delight and admiration of all who have seen it. **25 cents.**

GRAND DUKE ALEXIS—This is one of the most delicately beautiful of all Dahlias. Very large, perfect form, with long, thick quilled petals overlapping at the ends. White, slightly tinged and suffused delicate lavender. Etherially beautiful. **35 cents.**

LUCY FAWCETT—Sulphur-yellow, striped and spotted carmine-rose.

QUEEN VICTORIA—Pure canary-yellow. One of the freest bloomers. Good for cutting.

RED HUSSAR—Pure cardinal-red; fine.

ROBERT BROOMFIELD—Pure snow-white. Of large size. A very free bloomer. Grand for cut flowers. We recommend this variety.

SUSAN—A beautiful delicate soft shell-pink of splendid form. **25 cents.**

SYLVIA (or Dolly)—Flowers four to six inches in diameter; of fine form and full to the center, which is white, shaded to soft pink on the outer petals. In freedom of bloom next to the Countess of Lonsdale. A magnificent Dahlia.

VIVIAN—(New.) White, effectively edged rose-violet; one of the finest. **35 cents.**

PEONY FLOWERED DAHLIAS

A new family of Dahlias originating in Holland. The artistic flowers are very large and are best compared to the semi-double Peonies in form. The gayest of all Dahlias for coloring. Price, except where noted, **25 cents each;** the ten Peony flowered Dahlias, costing **\$3.60,** for only **\$3.10.**

ATTRACTION—(New.) Large flowers of an elegant lilac-rose; will be the attraction in any Dahlia garden. **50 cents.**

AVALANCHE—(New.) Pure white, the best white in this class.

BERTHA VON SUTTNER—Blush-rose tinted salmon-pink; fine.

CHATENAY—(New.) Color a lit-up pink like Chatenay Rose.

DR. PEARY—Dark mahogany shaded velvety crimson. Award of merit.

GEISHA—The pride of the Peony flowered Dahlias. This most sensational variety is the showiest and most attractive of this type in existence. The wonderful flowers are renowned for their excellent qualities; being exceptionally beautiful in color, perfect in form, grand in appearance and immense in size. The color of this acquisition is remarkable and attracts everybody's attention. It is a superb combination of brilliant scarlet and gold with an exquisite ring of rich, clear yellow at the center. Occasionally the first flower comes fully double, but all that follow show that beautiful golden center which combines to make this flower the most charming. Its form is very original, consisting of peculiarly twisted and curled petals. The effect of these phenomenal flowers is most pleasing, giving this variety the supreme place as the showiest Dahlia in existence. **50 cts.**

JOHN WANNAMAKER—(New.) This grand new Dahlia was awarded first prize for the best pink Dahlia of any class by the American Dahlia Society at the New York exhibition. Has flowers seven and one-eighth inches in diameter. Clear pink. A wonderful flower. **50 cents.**

QUEEN WILHELMINA—The flowers of this grand variety are snow-white, with a center of golden-yellow. They look like huge butterflies on the plant. They are so light and airy. Extra fine.

SHERLOCK HOLMES—(New.) A lovely shade of mauve; this is known as the Blue Dahlia. **35 cts.**

YELLOW KING—(New.) "The finest Peony Dahlia ever shown" was the report of the jury last year. Clear yellow, large, elegant flowers. **50 cents.**

Century Dahlias

This is an entirely new race of Single Dahlias. We consider today that the new Century Dahlias occupy first place where beauty of coloring and artistic effect is desired. Owing to their immense size, long stems, graceful carriage, combined with their purity of color, or the blendings of colors, shades and tints, they entirely outclass all other Dahlias for cut flowers. Keep each variety when cut in a separate vase. **Price, except where noted, 25 cents each; four Century Dahlias, costing \$1.00, for 85 cents.**

CRIMSON CENTURY—Deep, rich velvety crimson, shaded maroon, with rose halo around yellow disc.

FRINGED CENTURY—Intense rosy-crimson with lighter edges, fringed or cleft petals; blooms all summer; fine for cutting.

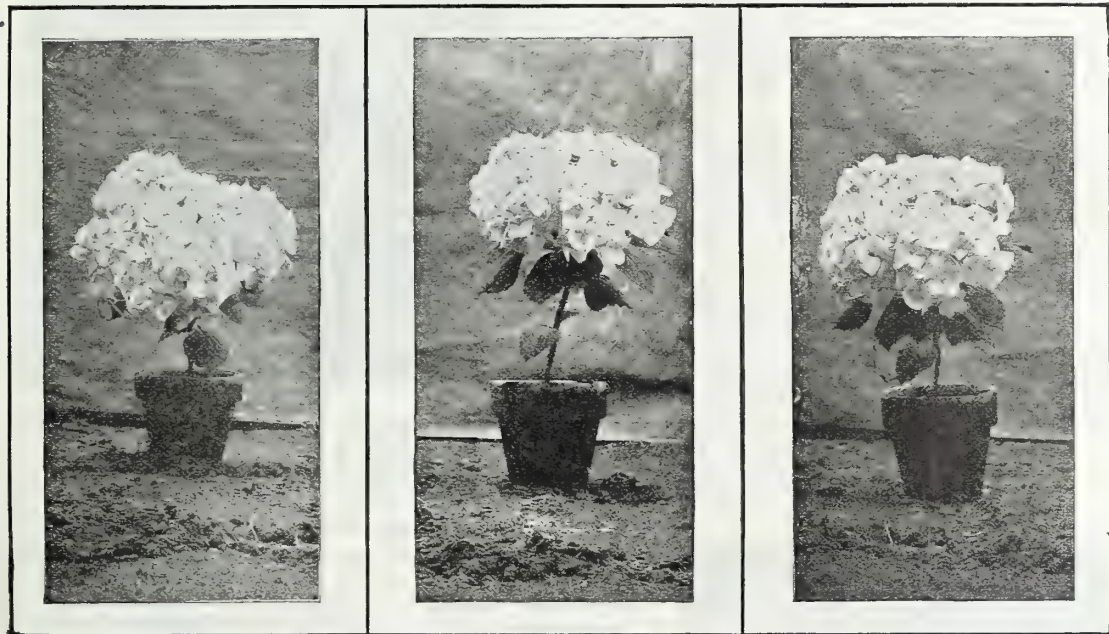
PINK CENTURY—Of a clear rose-pink color with long stems; a beauty.

VARIEGATED CENTURY—This, next to Geisha, is the gayest of all Dahlias. Dark oriental red with yellow tips and markings. A superior variety. Very showy.

Special Dahlia Offer No. 62 The entire 59 distinct varieties of Dahlias as catalogued, costing, if ordered singly, \$16.65, sent for a remittance of \$13.50 net.

New French Hydrangeas

Let us tell our friends that these new French Hydrangeas are the most meritorious plants brought out in years. They have enormous trusses of bloom that completely hide the plant. They are half hardy and may be planted in the latitude of Philadelphia and in the Gulf and Pacific States. They are also fine as house plants, blooming in the spring time about Easter. When kept at a temperature of seventy degrees out of doors they bloom about June. **Fine young plants, 20 cents each; strong plants, 40 cents.**



AVALANCHE—A splendid large white, which has made a reputation for itself during the past two seasons. An easy variety to force.

BOUQUET ROSE—Large trusses of well-formed flowers, rosy-amber, turning to bright pink; has proven a special favorite in the New York market this season.

E. G. HILL—This is the newest one and the very best, and is by far the very best pink that we have yet tried; trusses of immense size. Color a most pleasing shade of baby pink that does not fade. Growth vigorous, foliage large and attractive. It is one of the easiest to force into bloom during the spring, coming into flower early.

GENERAL DE VIBRAY—A favorite wherever seen. Very large heads of bright rose-colored flowers. A splendid early forcing variety.

Mlle. RENEE GAILLARD—Very large panicles of milky-white, irregularly dentated flowers, which is certain to become popular; it is entirely distinct. One of the best growers of Hydrangeas says that this variety should really have been awarded the silver medal given to Mme. Emile Mouillere last year as the best white.

MME. MAURICE HAMAR—A delicate flesh-rose color; a vigorous grower, the individual flowers as well as the trusses being very large; one of the easiest to force. Early.

MME. E. MOUILLERE—This has been the favorite white variety in the New York market this year; very free flowering, of good size and form. Awarded silver medal at the National Flower Show at Boston last year. A great favorite with English growers, one London grower known to us handling over thirty thousand of this variety alone.

MOUSSELINE, The Famous Blue Flowered Hydrangea—With us a beautiful plumbago-blue. The introducer describes it as a beautiful mauve-rose with cream-colored center; the flower heads are large and held erect; a decided acquisition. If you desire a beautiful deep blue Hydrangea flower get this one.

OTAKSA—The well-known forcing Hydrangea; flowers large, of a beautiful unique pink.

Special Offer No. 51 The entire set of Nine New French Hydrangeas in young plants, costing \$1.80, for only \$1.50 net. The 9 Hydrangeas in strong plants, costing \$3.60, for \$3.00.

CARNATION (The Divine Flower) PINKS

For beauty of flower and color, ease of culture, certainty and freedom of bloom, together with exquisite fragrance, this is well called the "Divine Flower." Plants in the open ground or in pots quickly make large specimens, and when brought indoors in the fall produce an abundance of flowers throughout the entire winter. Carnation blooms are expensive; don't buy them—grow them yourself. Pinch the plant back frequently during the summer season. In the fall bring indoors, place in a four or five-inch pot, keep in a temperature of forty to fifty degrees at night, and they will yield an immense number of flowers with splendid stems, as fine as those sold by florists. If not pinched in they will bloom profusely during the summer. **We offer the finest varieties in existence.** Your order is incomplete without some Carnations.

Excelsior Collection of Choice Carnations

10 cents each; set of Eight Excelsior Carnations, postpaid, for 75 cents

- BENORA**—The ground color is the faintest blush, lightly penciled in soft pink. The bloom is fluffy in appearance, exquisitely beautiful in form. One of the grandest of all Carnations.
- CHAMPION**—This is by far the darkest Carnation ever seen, and at the same time the most abundant bloomer. Brilliant dark red, shaded with richest maroon, fringed petals, nearly every flower being on a long stem. This variety surpasses in richness of color the most perfect Jacqueminot Roses.
- GLORIOSA**—This variety has been greatly admired wherever it has been seen for its desirable color, being a beautiful light pink satin color; flowers large size and very freely produced. Plant of grand habit and vigorous growth. It is a superb variety.
- GOOD CHEER**—One of the most fragrant Carnations we have seen. Color a clear, bright, glowing scarlet; a most continuous bloomer and distinct in color from any other sort offered. Greatly admired by all who have seen it growing here.
- HERALD**—One of the grandest of all Carnations for the garden, a dazzling red color that nothing surpasses.
- MATCHLESS**—Largest flowers of the purest immaculate white; large sized blooms. Valuable for garden planting and for pot culture. Very sweetly scented with that delightful old-fashioned clove fragrance.
- ROSETTE**—No other Carnation we know of equals this fine dark rose colored variety; very fragrant.
- SENSATION**—Certainly a grand pink Carnation of the largest size and deliciously scented.



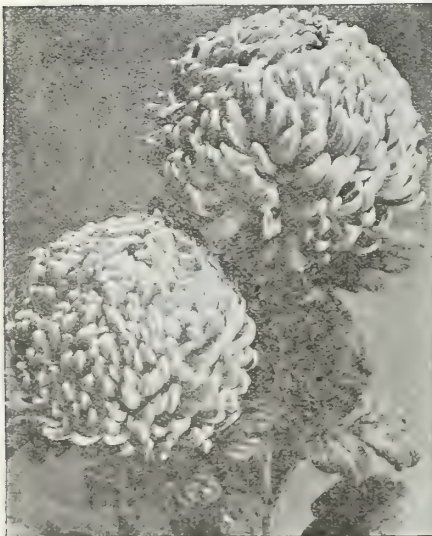
Carnation Flowers.

SET OF PRIZE WINNING "MUMS"

The following varieties are the Cream of all the "Mums" to date

12 cents each, except where noted.

Special Offer Any Five priced at 12 Cents for 50 Cents, Any Six Priced at 15 Cents for 75 Cents. The Entire "Prize Winning" Set of Forty Choicest Varieties, Costing \$5.44, for Only \$4.50.



"Mum" Marigold.

- BLACK HAWK**—An extra fine deep crimson variety of the largest size; none finer of its color. 15 cents.
- BRONZE BEAUTY**—Beautiful bronze color; reverse yellow. 15 cents.
- CANARY BIRD**—Rich golden-yellow; extra. 12 cents.
- CHARLES RAGER**—Pure white, incurved. Perfect flower. 12 cents.
- CHIEFTAIN**—The most popular pink; good in every way. 12 cents.
- CHRYSOLORA**—The best yellow for early October. 15 cents.
- CLEMENTINE TOUSET**—The most wonderful of all white "Mums." Pure snow-white, often flushed pink; of immense size. 12 cents.
- COLONEL D. APPLETON**—One of the best yellows for commercial and exhibition use. 12 cents.
- DOLLY DIMPLE**—A fine large built yellow variety. Extra. 15 cents.
- DR. ENGUEHARD**—Bright rose-pink; extra fine. 15 cents.
- EDA PRASS**—No pink "Mum" has beaten Eda Prass. 12 cents.
- GOLDEN EAGLE**—Very intense yellow, wide petals, incurved form, one of the finest. 15 cents.

SET OF PRIZE WINNING "MUMS"—Concluded.

GOLDEN GLOW—Bright yellow, good stem and foliage; a crackerjack. **12 cents.**
GOLDEN QUEEN—The best yellow variety for early October. None better. **20 cents.**
GOLDEN TANGO—A tango-yellow colored variety. **20 cents.**
GOLDEN WEDDING—Nothing finer among yellows; shines like burnished gold. The standard for measuring yellows; of mammoth size. **20 cents.**
HARVARD—Japanese reflexed, very dark crimson; extra. **15 cents.**
H. W. BUCKBEE—A lovely shade of pink and lilac. **12 cents.**
L'AFRICANE—Thought by many to be the best red "Mum." **15 cents.**
MARIGOLD—As a golden-yellow is unsurpassed both as to size and color. A monster flower. **25 cents.**
MAJOR BONNAFFON—One of the very best deep golden-yellow Chrysanthemums; beautiful flower, both in form and color; incurved. **15 cents.**
MAUD DEAN—The old standby pink; hard to beat. **12 cents.**
MILLICENS RICHARDSON—A glorious red flowering "Mum;" large bloom. **15 cents.**
MISS FLORENCE PULLMAN—Many think this superb white cannot be beaten. **12 cents.**
MISS MINNIE BAILEY—One of the grandest all pink Chrysanthemums. In finish it is exquisite, showing not the slightest trace of coarseness. **12 cents.**
MISTLETOE—Blush-white; late flowering. **12 cents.**

MRS. HENRY ROBINSON—Incurved white; a splendid variety. **12 cents.**
MRS. JEROME JONES—One of the finest white Chrysanthemums ever raised; flowers of exquisite form and finish; grand. **12 cents.**
MRS. WEEKS—The largest and grandest of all white "Mums." **12 cents.**
OCONTO—Large white blooms; on strong stems. **12 cents.**
PACIFIC SUPREME—This grand variety has literally leaped into popularity. Flowers are so large as to startle you. The color shades from lavender-pearl to the richest pink. **15 cents.**
RAMAPO—Rich golden-yellow, a first-class flower in every respect. **12 cents.**
ROBERT J. HALLIDAY—This is a glorious flower, of burnished yellow. **12 cents.**
ROI DE ITALIA—Flowers of mammoth size and deep golden-yellow; really a wonder. **12 cents.**
ROMAN GOLD—A very intense yellow, showing bronzy tints in the depths of the petals, hence the name. **15 cents.**
SILVER WEDDING—White with a slight pink tinge, ball shaped; extra fine. **20 cents.**
TINTS OF GOLD—Has the coloring of a beautiful golden sunset. **15 cents.**
UNAKA—A fine incurved bloom of a pleasing shade of pink. **12 cents.**
WHITE BONNAFFON—Incurved white; still largely grown for its many good qualities. **12 cents.**
YELLOW MRS. JONES—Deep golden-yellow, of immense size. Extra. **12 cents.**

Early Large Flowering Chrysanthemums

So many persons have asked for varieties of Chrysanthemums that would flower before frost comes in the fall. We here offer the very best early "Mums," so you can see them flower in the garden. **Price, 20 cents each; any three for 50 cents; the six for 90 cents.**

ADVANCE—The earliest flowering large white; has been had in bloom in July.
EARLY SNOW—The earliest of all white "Mums." Superb.
ESTELLE (or Polly Rose)—Pure snow-white; literally covers the plant.

GLORY OF THE PACIFIC—A lovely shade of brightest pink; large and fine.
MONROVIA—By far the best; very early; yellow, rich and fine.
OCTOBER FROST—Purest snow-white; fairly glistens in its purity.

Ostrich Plume Chrysanthemums

Below we offer a grand collection of these Chrysanthemums. The term "Ostrich Plume" is applied to this type on account of the feathery growth with which the petals are thickly covered. **Price, 20 cents each; the three for 50 cents.**

AUDREY—(New.) Pure snow-white; Ostrich Plume. Elegant.

ENFANT DES MONDES—Pure white, the petals covered with hairs.

LOUIS BOEHMER—A most beautiful shade of lavender-pink.

Anemone Flowered Chrysanthemums

The Anemone flowers consist of one or more rows of flat or tubular ray florets, with shorter quilled or tubular disc florets of the same or distinct color; are being grown in sprays for artistic floral arrangements. **20 cents each; the four for 65 cents.**

BESSIE FLIGHT—Bright rosy-pink; center full.
GARZA—Purest white with golden-yellow center; rays very broad.
PRINCESS—This charming variety has strap shaped

ray florets instead of semi-tubular pure white with golden center.
YELLOW GARZA—Like Garza, except the entire flower is golden-yellow.

Single Flowering Chrysanthemums

20 cents each; the three for 50 cents.

CEDDIE MASON—A fine scarlet-crimson color; extra.

GOLDEN MENSA—Golden-yellow, of exceptional merit.

MENSA—One of the largest whites; produced freely on long stems.

Hardy Pompon Chrysanthemums

These beautiful varieties are again very popular for outdoor bedding purposes. They are quite hardy, and with but a slight covering of leaves or coarse stable litter during the winter will take care of themselves after once planted, and produce an abundant, almost lavish, profusion of bloom; and the plants lend a coloration to the garden just at a time when other plants have been destroyed by frost and are looking their worst. Frost does not materially affect the flowering, and it will frequently happen that an armful of flowers can be cut after a sharp frost. **Price, 15 cents each; any four for 50 cents; the set of thirteen for \$1.35.**

AUNT MARY—Old rose color.
AUTUMN QUEEN—Magnificent pink.
BABY—Deep golden-yellow; covers the plant.
DIANA—Snow-white; very free.
EUGENE LANGAULET—Golden-yellow.
FAIRY QUEEN—A beautiful Enchantress-pink.
GOLDEN CLIMAX—Deep golden-yellow.

HELEN NEWBERRY—A glorious white variety.
INGA—Bright red; extra.
LILLIAN DOTY—Flowers beautiful shell-pink.
SOURCE d'OR (Source of Gold)—This is also known as Frank Wilcox; bronzy-yellow.
RHODA—Rosy-lake or red.
WESTERN BEAUTY—Rosy-pink; extra.

Hardy Large Flowering "Mums"

The majority of Chrysanthemums are hardy south of the Ohio river and many are hardy in the northern states, as far as the plant is concerned, but they must flower before early frosts to be of service. The varieties offered below generally flower from the last of August to the fifteenth of October. **Price, 20 cents each; three for 50 cents; the set of seven for \$1.00.**

AUTUMN GLOW—Fiery terra cotta or rosy-crimson.
EXCELSIOR—Rich fine yellow.
GLORY OF SEVEN OAKS (Carrie)—Deep golden-yellow; a beauty.

INDIAN—A fine shade of Indian-red.
JACK FROST—Snow-white; very free flowering.
OLD LAVENDER—A beautiful shade of lavender.
SUNSHINE—Bronzy-yellow; large flower.

Flowering Begonias

These Begonias are fine for house culture, as all will flower during the dark days of winter. **Price, except where noted, 15 cents each; four priced at 50 cents.**

ALBA PICTA—Long, pointed, slender leaves, thickly spotted silvery-white; foliage small, elegant; lovely pink flowers.
ARGENTEA GUTTATA—Lovely green foliage, with spots of silvery-white.

CORALLINE LUCERNE, The Wonderful New Flowering Begonia—This new Begonia has simply taken everybody who has seen it by storm. There was not a single lady or florist who visited our greenhouses the past spring that did not purchase this Begonia after they had seen it in flower. It certainly is a wonder. The blooms last from a month to six weeks, and are borne in immense clusters, almost hiding the plant. The color is bright coral-red, changing to a delicate pink. It is past the power of speech to describe it. A wonder. **Fine plants, 25 cents.**

GRACILIS LUMINOSA—Bright scarlet, so bright as to be luminous.

GLOIRE DE CHATELAINNE (New Everblooming Flowering Begonia)—This new Begonia is undoubtedly the freest blooming variety known. It is of easy culture, low, bushy habit and literally covered the entire year with a wealth of bright pink flowers with yellow stamens. It well merits the name of Ever-blooming Begonia. This variety is especially suited for florists, being of the Chateleine type of Begonia and one that can be handled by everyone. **20 cents.**

PICTA ROSEA—Bright, silvery-pink flowers. Extra fine.

PRESIDENT CARNOT—Upper side of foliage deep green, under side blush-red; flowers beautiful coral-red.

RUBRA—Has strong, slender branches, gracefully drooping under heavy waxen leaves and pendent panicles of coral-colored flowers as large as a hand. Medium-sized plants are frequently seen with more than twenty such panicles at a time. **20 cents.**

ROBUSTA—Bright rose and pure white. Coral-red buds. This is a very desirable variety.

SANDERSONII (The Coral Begonia)—One of the best flowering Begonias. Flowers are of a scarlet shade of crimson, borne in profusion for months at a time. Resembles coral.

THURSTONII—Metallic-green leaves, with shell-pink flowers.

VERNON—A bedding Begonia, deep rose flowers.



Flowering Begonia.

Special Offer The Twelve Choice Flowering Begonias, costing \$2.00, for \$1.60.

Surprise Collection Only \$1.00, By Express at Purchaser's Expense

We usually have at the end of the selling season a number of choice plants that we have grown a surplus of. To those who will send us a dollar, we will, after June 1, 1917, send a fine lot of plants that will be a surprise to you. If your order goes by express, we can send many more plants than if it goes by mail. So send us a dollar, and after June 1, we will send you the Surprise Collection of plants. The selections to be strictly our own. We sold over one thousand of the Surprise Collections last June, and everyone was pleased with them.

TENDER PLANTS Plants in this List Will Not Stand Frost



Asparagus Plumosus Nanus, Lace Fern.

Asparagus Plumosus Nanus The Lace Fern.

This graceful climber has to a great extent taken the place of the once popular Smilax in all fine decoration. It possesses the advantage of being much more graceful—its foliage being finer than that of the most delicate Fern—and it will last for weeks after being cut, the whole plant being of a bright, cheerful green. Excellent house plants, succeeding under almost any conditions; by pinching back may be grown as a plant. **12 cents each for fine plants; large, strong plants, 40 cents each.**

Asparagus Sprengeri

The Emerald Feather Fern.

A most desirable species, especially useful to grow as a pot plant for decorative purposes or for planting in baskets or vases. The fronds are frequently four feet long, of a rich shade of green, and most useful for cutting, retaining their freshness for weeks after being cut. It will make an excellent house plant, as it withstands dry atmosphere and will succeed in almost any situation. **12 cents each, three for 30 cents; strong plants, 40c.**

Brugmansia, or Angel's Trumpet

Here is a plant for the masses. It grows easily, blooms freely, and the flower is something to be proud of. The Brugmansia blooms indoors in winter and in the garden in summer. The plant has large, tropical leaves, with blooms eight inches long by six inches wide at the mouth, resembling a trumpet, hence the name, "Angel's Trumpet." Pure white in color and as fragrant as a Jasmine. **Fine plants, 25 cents.**

New Giant Coleus, Christmas Gem

(Brilliancy, or Dr. Ross.)

Leaves immense, eight to twelve inches long, looks like a Rex Begonia, and is just as beautiful. Cannot be excelled as a pot plant. The name aptly describes the appearance of this variety, which belongs to the giant-leaved section; of strong, vigorous habit, growing from two to three feet high, with leaves often nine to ten inches long, which are of bright carmine, shading off to a deep maroon, the margin being yellow and green, the whole leaf having a rich velvety luster. **20 cents; three for 50c.**

The Wonderful New Coleus

Trailing Queen and Trailing Beauty

These Coleus are an entirely new break, as no one ever before heard of a Coleus that trailed. They both have glorious foliage, **The Queen** having a large distinct center of bright pink or red, with a

broad border of emerald-green. In **The Beauty**, the foliage is a rich golden-yellow, often changing to pure white. No plants are more suitable or showy for hanging baskets, window boxes, vases or pot culture than are these two trailing Coleus. Put several plants in a basket or pot and see how lovely a plant may become. **20 cents each; the two for 30 cents.**

Coleus—General Assortment

These are all good bedders, standing the hot sun without losing their color. **8 cents each, ten for 65 cents; the entire twenty-one varieties for \$1.20.**

- ACME**—Bronze, red center, edged green.
- ADMIRATION**—Deep claret-red, edged green and yellow.
- BECKWITH GEM**—Dark velvety maroon, bordered fiery-red, edged green.
- CHICAGO BEDDER**—Yellow, mixed with pea-green.
- EMPRESS OF INDIA**—Bronze-red, golden-yellow edge.
- FIREBRAND**—Brilliant dark red; extra.
- FIRECREST**—Carmine-crimson, bordered scarlet.
- GLORY OF AUTUMN**—All the colors of autumn leaves.
- HERO**—Very dark, almost jet black.
- JOSEPH'S COAT**—An intermingling of many colors.
- MAY LEVERING**—Spotted and striped with maroon, green, red and yellow.
- MRS. BARR**—Red, yellow and green, fringed edge.
- QUEEN OF THE WEST**—Creamy-white and oxide-green, margin bright yellow.
- QUEEN VICTORIA**—Yellow and bronzy-red.
- RED CLOUD**—Dark red of royal hue.
- SENSATION**—Crimson-maroon, center bright red.
- SETTING SUN**—Velvety red, bordered golden-yellow.
- SPOTTED GEM**—Spotted yellow, green and red.
- VERSCHAFFELTI**—A rich velvety crimson.
- YEDDO**—Green with broad band of lemon-yellow.
- YELLOW BIRD**—Clear bright yellow.

Crotons

Nothing can excel the beauty and richness of coloring that is found in this class of plants. They are beautiful pot plants for the conservatory, making very handsome specimens for decorative and exhibition purposes. They are used extensively as bedding plants, for which purpose they are exceptionally well adapted. They should be planted in full sun, in a position where they can be more liberally supplied with water, which develops the most wonderful coloring in the foliage. Undoubtedly the most interesting and showiest bedding in our Springfield yards the past few years was made with this plant. They are fine for basket or vase work. Where we used to sell dozens we now ship thousands. Leave the selection of varieties to us. We can supply twelve choice kinds. **Fine plants, 20 cents each; three for 50 cents; twelve for \$1.75.**

Beautiful Dwarf Ornamental

Otaheite Orange

This valuable and distinct variety of the Orange family is a dwarf, compact grower, with glossy deep green foliage, which has a decided odor of the Orange Tree of Florida, and is exceedingly floriferous, producing a wonderful profusion of pure white flowers of the most delicious fragrance, identical with the much-sought-for blooms of the Southern Orange groves. Otaheite fruits immediately after flowering, bearing fruit about one-half the size of the ordinary Orange, retaining in a marked degree their sweetness. This unique Orange cannot be equalled as a winter-blooming pot plant for house culture. Requires but little sunlight, and flowers and fruits when but twelve to fifteen inches high. As a pot plant this lovely dwarf Orange is one of the most novel and beautiful that can be grown. With a couple of plants you can have an abundance of the far-famed delicate and fragrant Orange blossoms. We have grown a large stock of clean, vigorous plants of this beautiful Orange that will bloom and fruit at once. We commend it to our friends as a novelty of sterling worth and merit. **Fine plants, 20 cents each; strong plants, 35 cents each; extra large, strong plants, ready to bloom and bear profusely, 60 cents each.**

TENDER PLANTS—Continued.

Fuchsia, or Ladies' Eardrops

Price, 15 cents; the set of six for 75 cents.

BLACK PRINCE—This is, without question, the very finest Fuchsia grown for the amateur to cultivate. It makes a shapely bush, is robust in growth, free from disease and insects, and is probably the freest in blooming. We have seen specimen plants six feet in height and four feet across loaded with thousands of bright buds and blossoms of a beautiful waxy carmine or pink color. Certainly a plant of easy culture.

LITTLE BEAUTY—Red sepals, sky-blue corolla, so free as to almost hide the plant.

LORD BYRON—Red sepals, corolla of the richest royal purple, so free in flower as to almost hide the plant.

MONSTROSA—Of the largest size; scarlet sepals, double snow-white corolla.

SPECIOSA—Habit erect and compact, presenting a decidedly neat and attractive appearance as a pot plant, the fine star-shaped flowers are produced in profusion, and begin when plants are quite young. The flowers are three inches or more in length; tubes and sepals bright rose, corolla brilliant carmine; it blooms quite freely.

WHITE BEAUTY—Red sepals, pure white corolla.

Oleanders

These old-fashioned shrubs are becoming immensely popular again. We are growing and selling them by thousands. No plant makes more handsome specimens in tubs for the veranda or yard. Can be wintered in the cellar. **Except where noted, 15 cents each; the set of five Oleanders for 75 cents.**

LUTEA—Has double primrose-yellow flowers of a lovely shade, also fragrant. Scarce.

ROSEA—Has double pink flowers. The old favorite. Very sweet.

ROSEA VARIEGATA—Foliage is green, deeply edged with yellow; pink florets. **20 cents.**

LILIAN HENDERSON—Has double white flowers of the largest size. Fragrance like the old double pink. Scarce. **20 cents.**

RUBRA—The crimson-flowered variety. **20 cents.**



Violet Plant.

Leopard Plant (Farfugium Grande)

A decidedly striking and effective plant. Is also known as the Leopard Geranium. Fine for house culture; easy to grow. Also fine out of doors, hardy as far north as Tennessee. Leaves ten to twelve inches across, distinctly marked with creamy-white and yellow spots. **40 cents each.**

The Wonderful New

Lemon Ponderosa

Our New Ponderosa Lemon is what we claim for it. Largest freest-blooming, fruiting and most delicious of all Lemons.

Nothing that has ever been brought to our notice in the plant line has caused half the commotion that this wonderful Lemon has. It is a true ever-bearing variety. On a plant six feet high no less than eighty-nine of the ponderous Lemons were growing at one time. It was a beautiful sight to see. The tree was blooming, and at the same time had fruit in all stages of development, from the size of a pea up to the ripe fruit, showing it to be a true ever-bearer. Fruit has been taken from this tree weighing over four pounds. The Lemons have very thin rind for such large fruit. It is the juiciest of all Lemons, makes delicious lemonade, and for culinary purposes cannot be excelled. We have the entire stock of this Ponderous Lemon, and guarantee the trees to produce the same large fruit. No budding or grafting necessary. Ponderosa Lemon is sure to become popular when it is known. It fruits when quite small, and makes a lovely house plant. Everybody can grow his own lemons; it will fruit freely each year. **Thrifty young plants, 20 cents each; strong one-year-old plants, many of which will fruit this year, 35 cents; strong two-year-old plants, 60 cents each.**

Beautiful and Fragrant Violets

Of all the delightful perfumes that of Sweet Violets is the most delicate and pleasing. If grown in the house for winter flowers they should be kept at a low temperature, as they will not bloom freely where it is too warm. If left in the open ground during the winter, protect with a covering of leaves.

Double White Perpetual-Flowering Violet, SWANLEY WHITE, or Queen of Fragrance—Of all the white Violets this is the best, either for pot culture in the house or bedded out. In pots it grows luxuriantly and is loaded with flowers. It is not an uncommon sight to see as many as fifty large flowers open at once, presenting a beautiful sight, their delicious perfume filling a whole room. **15 cts.**

LADY HUME CAMPBELL—A true ever-bloomer. This is one of the finest of all double blue Violets. It is simply wonderful in the number of beautiful flowers it produces. In color it is a shade of the richest intense blue. It is a charming contrast with the white variety. **15 cents.**

New Imperial or Parma Violet

This is, without question, the largest, richest colored and most highly perfumed of all the single flowering Violets. It blooms very freely, literally bending the plant with its lovely blue flowers of the largest size. Its blossoming season is longer than any other Violet. **25c; the three Violets for 45 cts.**

VELVET SOD LAWN GRASS

Composed of a variety of fine, dwarf, close-growing grasses, which, on properly prepared, finely pulverized ground, will produce very quickly a neat velvety lawn and permanent sod. Has given universal satisfaction for the past twenty-five years. **30 cents per quart.**

Do not forget to send for our book
"PEONIES FOR PLEASURE"

It tells all about a great collection of these wonderful flowers. Write for it today.

Our Fall Catalog of Dutch Bulbs

and Everything for Fall Planting will be mailed all our customers about September 1st. If you do not get a copy drop us a card.

Garden Implements

RUBBER PLANT SPRINKLER—Indispensable for floral work and window gardening. Used to apply Thompson's Rose Nicotine. Invaluable when once tried. Used for dampening clothes or sprinkling in any way. **\$1.25.**

TROWEL, SOLID STEEL—Absolutely the best Trowel in the world. One solid piece of steel, and will outwear several of the ordinary sort. **75 cents, prepaid.**

EXCELSIOR WEEDER—A very useful little tool for weeding seed beds, stirring the ground, etc., **25 cents, postpaid.**

TENDER PLANTS—Continued.

Ruellia Mokoyana

This is a charming indoor plant for culture in pots or may be used in vases and baskets; of bushy spreading habit and finely marked leaves, which are beautiful olive-green, delicately veined with silver and rich purple underneath. A neat and handsome plant, always bright and pretty. The flowers are exceedingly beautiful, trumpet shaped, and of a rosy-lavender color, almost covering the plant in their great profusion. **15 cents each.**



Ruellia Mokoyana.

Ever-Blooming Tritoma Pfitzerii

The greatest bedding plant ever introduced, surpassing the finest Cannas for attractiveness and brilliancy, equal to the Gladiolus as a cut flower, and blooms incessantly from June until November. Plants perfectly hardy in open ground all winter south of Philadelphia. Further north they must be protected or wintered in the cellar like the ordinary Tritoma. Just bury the roots in sand; nothing more is required. Should be planted out very early in the spring; and will commence growth and bloom at once, growing larger and finer every day. Plants show six to twenty grand flower stalks all the time, each holding at a height of three to four feet a cluster of flame-colored flowers of indescribable beauty and brilliancy. Each cluster keeps perfect several weeks, and when it fades several more are ready to take its place. Fall frosts do not kill it or stop its blooming, and it is as brilliant as ever long after other garden flowers have been killed. For cutting it is unsurpassed, and the beautiful long spikes keep several weeks in water. **Strong plants that will bloom the first summer, 20 cents; three for 50 cents.**

Sansevieria Zeylanica Zebra Plant.

A beautiful plant, specially adapted for the decoration of drawing rooms and halls, as it stands dust and drought with impunity and requires scarcely any water. The leaves are beautifully striped crosswise, with broad white variegations on a green ground. It is a rare and beautiful plant, which should be abundantly grown for positions out of the reach of sunshine, where other plants will not thrive. It can be placed in any position in any room and do well. It has singular beauty for decorative purposes which other plants do not possess, and it is useful both in winter and summer. For vases and baskets it is a fine center piece, and grows splendidly out of doors during summer. **Fine plants, 15 cents.**

CAPITOL PLANT FOOD

The essence of plant life, fine for living plants, odorless. If you want to see your plants hump, try this Capitol Plant Food. We recommend it especially for plants grown in the house. So you test this food at small cost to you. We offer a trial size, mailed with directions how to use, for **30 cents, postpaid.** Will feed fifty plants one time and show you how it works. **Larger package, making 160 pints, only 50 cents, postpaid.**

Emperor Pansies

Our Emperor Pansies are the best the world produces. They are the choicest large-flowering sorts, both of European and American growers. It has been our aim to make this the finest strain of this favored flower in existence. **5 cents each; six for 25 cents; 40 cents per dozen; thirty for \$1.00, net.**

Peperomia Muscosa Or Watermelon Begonia

This is also known as the Silver-leaved Begonia. Here is a most beautiful plant for pot culture; easy to grow and thrives anywhere; leaves deep olive-green, distinctly marked with silvery-white. Thick and waxy-like; leaves distinctly variegated white and green, and have the appearance of being powdered with frosted silver. **15 cents.**

Chinese Hibiscus

Price, except where noted, 15 cents each; any four for 50 cents. We have large plants of Hibiscus, ready to bloom, for 35 cents.

SINENSIS GIGANTEUS—This is a plant for house cultivation during winter or summer, or for planting outside during summer. It blooms at all times of the year. The plants branch freely and flower profusely, commencing to bloom when not more than a foot high. As a specimen plant for large pots it has an equal only in the Brugmansia. Its flowers are of enormous size, often eight to ten inches across, opening flat, and of such vivid crimson-scarlet color that they can be seen from a long distance like a flaming torch. They can be wintered in the cellar or pit with perfect safety, and if one does not care to grow them all winter, one should have one or two for summer display. **20 cents.**

GRANDIFLORUS—Rich, glossy, cut-leaved foliage, literally covering the plant with scarlet-crimson flowers.

SUB-VIOLEACEOUS—Flowers of enormous size, beautiful carmine, tinted with violet. Probably the largest flower of the Hibiscus family, and an unusually free bloomer. We take great pleasure in recommending this fine plant.

DOUBLE CRIMSON—This grand variety has immense flowers of the richest crimson; combined with glossy foliage, renders it the best of all.

CARMINIATUS PERFECTUS—Full, round flowers of perfect shape and of a rich, soft carmine-rose, with a deep crimson eye; fully six inches in diameter.

VERSICOLOR—A variety combining in its flowers all the colors of the whole family, being handsomely striped crimson, buff, rose and white. Flowers eight inches in diameter.

SPECIAL OFFER—We will send the entire set of seven distinct kinds of Hibiscus, including Peachblow, for **\$1.00.**

New Pink Hibiscus, "Peachblow"

The flowers are double and from four to five inches in diameter, of a charming, rich, clear pink color, with small deep crimson center. It is one of the freest flowering plant novelties recently offered. The color is an entirely new and beautiful shade, and it blooms abundantly and continuously during the summer and fall months. Large plants two and three years old make a magnificent show. It will give general satisfaction to those who grow it, either in pots or planted out in the garden. It blooms well in the winter in the greenhouse or in any sunny window. **25 cents; strong, fine plants, 50 cents.**

THOMPSON'S ROSE NICOTINE

THOMPSON'S ROSE NICOTINE is put up in sixty-cent (makes one and one-half gallons spray) and eighty-five-cent (makes six gallons) cans, and the **FUMIGATOR** is put up in twenty-five cent packages. The Fumigator can be used to fumigate plants to kill insects. Can only be sent by express at above prices; we prepay expressage.

TENDER PLANTS—Concluded

In this list we do not give extended descriptions, but our customers will find many valuable plants embraced. These are suitable for house and garden culture.

	Each	Each
ACALYPHA SANDERI—The Comet plant.....	15c	
ACALYPHA TRICOLOR—Fine bedding plant...	15c	
ACALYPHA TRIUMPHANS—Gorgeous foliage, fine bedder.....	15c	
ALOYSIA CITRIODORA—LEMON VERBENA—The most fragrant foliage of any plant.....	10c	
ALYSSUM—Giant double-flowered. Pure white flowers.....	10c	
BROWALLIA GIGANTEA—Flowers intense indigo-blue.....	10c	
CRAPE MYRTLE—Three colors, pink, crimson and purple.....	15c	
CUPHEA PLATYCENTRA, or Cigar Plant.....	10c	
CYPHERUS ALTERNIFOLIUS, the Umbrella Plant—A handsome pot plant, useful in vases, etc.	10c	
EUPHORBIA SPLENDENS, or Crown of Thorns	20c	
GENISTA, or Gold Shrub—Golden-yellow flowers	15c	
IMPATIENS, or Sultana—Six distinct colors. (Six for 50 cents.).....	10c	
JASMINE MALAYAN, or Confederate Jasmine.....	15c	
JASMINE GRAND DUKE OF TUSCANY—Double white flowers.....	25c	
(Strong two-year-old plants, 50 cents.)		
JUSTICIA, the Pink Brazilian Plume Flower...	15c	
LANTANAS, or Shrubby Verbenas—Five separate colors.....	10c	
LANTANA, WEeping—Fine for baskets and vases; lavender flowers.....	10c	
MYRTLE, SWEET, German, or the Jew, or Bride's Myrtle—The leaves are very fragrant.	25c	
PLUMBAGO CAPENSIS—Sky-blue flowers.....	25c	
PETUNIAS—Double-flowering; four colors. (Four for 50 cents).....	15c	
PRIMROSE, New Baby Malacoides—Light pink flowers.....	15c	
PRIMROSE, CHINESE—Three colors, white, pink and red.....	15c	
PRIMULA OBOVATICA GRANDIFLORA—Free bloomer.....	10c	
SALVIA SPLENDENS—Brilliant scarlet.....	8c	
SALVIA LE PRESIDENT—Rich scarlet flowers	8c	
SALVIA SPLENDENS ALBA—Pure white.....	8c	
SALVIA SPLENDENS VARIEGATA—Variegated red and white.....	8c	
SALVIA MRS. PAGE—A perfect sheet of scarlet (Salvias, 75 cents per dozen.)	8c	
SAXIFRAGA SARMENTOSA, or Strawberry Geranium.....	10c	
SELAGINELLA—Low-growing fern-like Moss; elegant.....	15c	
VERBENAS, Mammoth-Flowering—All colors. (Six for 50 cents).....	10c	
VASE PLANTS—A fine assortment. (6 for 50c.)	10c	

TENDER VINES AND CLIMBERS

These make a rapid growth and bloom throughout the summer; are very showy.

The Wonderful Giant Moonflower

(Ipomea Maxima.)

A Giant in Growth and Flower and Wonderfully Fragrant. This grand new Moonflower is a decided improvement over the old well-known variety Ipomea Grandiflora. The flowers are more than twice the size of the old variety, oftentimes measuring from six to seven and one-half inches across, and are produced in such wonderful profusion that they completely cover the vine with a veil of glistening white. Its growth is very rapid when planted in good rich light soil, nothing to equal it as a tender vine for porch and lattice shading. **Fine plants, 20 cents each.**

New Moonflower, HEAVENLY BLUE—This makes a splendid companion plant to the White Moonflower. It is equally rapid in growth, and a much freer blooming variety than the white one. The blooms come in clusters of five to twelve, and at

times almost hide the vines. The flowers are the most heavenly blue, with reddish-purple rays, and six inches across. Nothing is more beautiful. **12 cents.**

ANTIGONON LEPTOPUS, or the "Queen's Wreath"—Produces rose-colored flowers in racemes two feet long; beautiful. **12 cents.**

BOUGAINVILLEA SANDERIANA—The Chinese Paper Plant. Lovely clear lavender flowers. **25 cts.**

GERMAN, or PARLOR IVY—A rapid-growing plant, well adapted for training in the parlor. Leaves glossy green and flowers yellow, in clusters. **10 cents each.**

MADEIRA VINE—White flowers; exquisitely fragrant. **6 cents; two for 10 cents.**

SMILAX—A lovely house vine. **8 cents.**

TRADESCANTIA, or WANDERING JEW—Fine for baskets. Two distinct kinds. **10 cents.**

VINCA MAJOR VARIEGATA—Fine for baskets and vases; green and white foliage. **12 cents; large, strong plants, 35 cents.**

TENDER BULBS

Tuberous-Rooted Begonias

SINGLE FLOWERING—White, yellow, crimson scarlet, orange and pink. **10 cents; three for 25 cents; seven for 50 cents.**

DOUBLE FLOWERING—White, yellow, crimson, scarlet, orange and pink. **15 cents; three for 40 cents; six for 75 cents.**

CRISPA—Giant blossoms of enormous size, with elegant fringed petals, with crisp or curled like appearance. Red, white, yellow, orange and pink. **15 cents; three for 40 cents; five for 60 cents.**

CRISTATA—New crested or plume-like petaled Begonias of great beauty; red, white, orange, yellow and pink. **15 cents; three for 40 cents; five for 60 cents.**

Calla Lilies

Black Calla, ARUM SANCTUM—This is the famous Black Calla; it grows so very easily and produces Calla Lily-shaped flowers that in color are coal-black. This Lily produces the blackest flower of any plant in existence. It is simply jet black. Stock is scarce. **25 cents each.**

Calla Ethiopica, EGYPTIAN LILY—This is the well-known Egyptian Lily, or Lily of the Nile, with large white flowers, broad foliage, and it will prosper under very adverse circumstances. **Plants to bloom next winter, 15 cents; strong blooming bulbs, 25 cents each.**

New Dwarf Calla, LITTLE GEM—This Calla only grows about eighteen inches high, and is the freest blooming of all the Callas. The bloom is pure white. The following facts will convince anyone of its great superiority over the old sort. Of dwarf habit. The same plant will grow and bloom for years, and the quantity of bloom which a good plant will produce is astonishing. A large plant is hardly ever without one or more flowers. All in all, it is one of the most desirable plants we ever offered. **20 cents; three for 50 cents.**

Golden Yellow Calla, RICHARDIA ELLIOTTIANA—It has the same habit of growth as the ordinary white variety, with flowers of same size and shape, but of a rich, clear, lustrous golden-yellow color. **Blooming bulbs, 30 cents.**

The New Godfrey Calla Lily, "DEVONIENSIS"—Undoubtedly the finest thing ever sent out in the Calla line, and quite indispensable. Blooms all winter. Compared with the ordinary Calla, it gives three blooms to one; is snow-white and perfect in form. Blooms on very small plants, though it attains to a very large size with very large flowers. **Blooming bulbs, 35 cents each.**

Spotted Calla, RICHARDIA ALBA MACULATA—Plant with beautiful spotted leaves. It flowers abundantly during the summer months when planted out in the open border. It makes a fine plant for the center of vases. The flowers are shaped like those of a Calla, and are pure white, shaded with violet inside. Keep dry in the winter, and start in the spring like a Dahlia. **Blooming bulbs, 15 cents, two for 25 cents; larger size, to produce a dozen blooms, 25 cents.**

SPECIAL OFFER No. 50—The Six Calla Lilies, Costing \$1.40, for \$1.15 Net.

GLADIOLI

Their easy culture appeals to all, and the freedom from disease and insect pests is another great asset. It associates so well with all garden flowers, but above all is the decorative possibilities both as a cut flower subject and also in the garden. Our collection we here offer are unsurpassed and will be a source of great delight to all who plant them. The flowers last a long time when cut. Do not be stingy in planting Gladioli, but plant by the dozen, or even by the hundred.

Special Offer The entire forty-one varieties of choicest Gladioli, costing \$3.52, sent for only \$2.75. A great bargain, and you cannot beat this set of Gladioli no matter from whom you buy.

- AMERICA**—Too much cannot be said of this beautiful dainty pink, tinted lavender. It is sold by the millions to florists who use it for cut flowers. The flowers are of immense size and of wax-like texture. **6 cents each; 50 cents dozen.**
- ANNIE WIGMAN**—Light yellow, with pronounced dark crimson blotch; superb. **8 cents each; 50 cents dozen.**
- APOLLO**—A very large wide open flower. Color a deep begonia-rose, almost scarlet, with delicate white markings in the throat. New and fine. **15 cents each; \$1.50 dozen.**
- AUGUSTA**—Opens delicate pink, changing to pure white. If cut just as the first bud begins to open and kept inside it opens pure white with blue anthers. Largely used by florists for cut flowers. **6 cents each; 50c dozen.**
- BARON JOSEF HULOT**—One of the finest deep violet-blue Gladioli, with well opened flowers. **6 cents each; 50 cents dozen.**
- BRENCHELEYENSIS**—Intense vermilion-scarlet, very brilliant. **6 cents each; 50 cents dozen.**
- CANARY BIRD**—Fine lemon-yellow; strong spike. **10 cts. each; \$1.00 dozen.**
- CHICAGO WHITE**—A fine white variety with lavender stripes on lower petals. From seven to eight flowers open at one time. **7 cents each; 65 cents dozen.**



Gladiolus Mrs. Frank Pendleton.



Gladiolus Europa.

- COLUMBIA** — Light orange-scarlet freely blotched and penciled with bluish-purple. Throat freely mottled. **10 cents each; \$1.00 dozen.**
- ELECTRA**—Bright and pleasing brick-red; one of the earliest varieties. **15 cents each; \$1.50 dozen.**
- EMPRESS OF INDIA**—A rich dark velvety crimson, shaded royal purple. Certificate of merit from Haarlem and London. **8c each; 80c doz.**
- EUROPA**—A very fine snow white Gladiolus, of perfect form, with many pure white blooms open at once. The formation is close and compact, making a magnificent spike of wide open flowers. **12 cents each; \$1.25 dozen.**
- FAUST**—Wine-red, immense flower; extra. **5c each; 50c dozen.**
- FRED WIGMAN**—Bright red with yellow throat. **8c each; 50c doz.**
- GLORY OF HOLLAND**—A new white with slight tinting of bluish-pink and anthers of delicate lavender; blooms large and gracefully set on a tall spike. **6 cents each; 50 cents dozen.**
- GOLDEN KING**—A brilliant golden-yellow, with intense crimson blotch in throat, making a striking contrast; one of the best. **15 cents each; \$1.50 dozen.**
- GOLDEN WEST**—One of the best exhibition varieties on account of its distinctive markings, the color being a clear orange-scarlet, the lower petals blazed with golden-yellow faintly suffused with violet shadings. The individual flowers are of large size and seem to stand out boldly, making it very noticeable in any collection. **8 cents each; 80 cents dozen.**
- HALLEY**—A most attractive early blooming sort, with large well-opened flowers of delicate salmon-pink, flowers well placed on long graceful spikes; a most beautiful variety. **5c each; 50c dozen.**
- HOLLANDIA**—A dainty Gladiolus with beautiful shadings of apricot; very fine in combination with Baron Josef Hulot. **5 cents each; 50 cents dozen.**
- LE PACTOLE**—A beautiful shade of yellow with large dark blotch. **5 cents each; 50 cents dozen.**
- LILY LEHMAN**—This is the lily-flowering Gladiolus because the flowers resemble the Lily. A pure glistening white with just the faintest tinge of pink on tips of the petals; matchless in form and color. **7 cents each; 65 cents dozen.**
- MAY**—A noble white variety, lightly flecked crimson; fine for forcing. **7 cents each; 65 cents dozen.**
- MEADOWVALE**—White with lilac throat, a very pretty white flowering Gladiolus. **7 cents each; 65 cents dozen.**
- MRS. FRANCIS KING**—The most beautiful "Besnard shade" of flame-pink, immense flowers on a spike growing four feet high, with from eighteen to twenty flowers, six to eight of which are open at one time; a magnificent variety. **6 cents each; 50 cts. doz.**
- MRS. FRANK PENDLETON, JR.**—Bright rose-pink on a pure white ground. A giant blotch of richest blood-red on lower petals; as showy as any Orchid. No grander variety in existence. Awarded the highest honors of the American Gladiolus Society. Always a prize winner. **15 cents each; \$1.50 dozen.**
- NIAGARA**—A light Crocus or primrose-yellow, slightly tinted with rose-pink in throat; large open flowers on a strong spike. For color, texture and keeping qualities this Gladiolus is one of the very best. **10 cents each; \$1.00 dozen.**
- ORION**—Light rose with dark blotch; a superb variety. **5 cents each; 50 cents dozen.**
- PANAMA**—The companion to America, which has become very popular. A perfect Hermosa-pink in color with wide open wax-like flowers; one of the best of the clear pinks; many awards. **8 cents each; 80 cents dozen.**

GLADIOLI—Concluded.

PEACE—A grand white flower with delicate lilac feathering in the throat of two of the petals; flowers correctly placed on a tall, graceful spike. **10 cents each; \$1.00 dozen.**

PINK BEAUTY—Rosy-pink with large dark blotch; ten days earlier than any other Gladiolus; invaluable for this reason as a cut flower. **6 cents each; 50 cents dozen.**

PINK PERFECTION—In color a true La France pink, the softness of coloring and magnificent texture of the blooms make it one of the choicest of the new varieties; large open flowers on a strong spike. **15 cents each; \$1.50 dozen.**

PRIMULINUS HYBRIDS—These hybrids gained by crossing the species Primulinus with the Ganadavensis type, have retained all the daintiness and graceful form of the Primulinus parent, even to the "hood" formed by the drooping of the upper petal, and have an added beauty of exquisite coloring, from the softest primrose to a beautiful rose. **6 cents each; 50 cents dozen.**

PRINCEPS (Known as the **Thousand Dollar Gladiolus**)—Large Amaryllis-like flowers of a rich dark scarlet, with deep shadings in throat and magnificent large white blotches on lower petals, probably the most showy of all sorts as to size and beauty. **7 cents each; 65 cents dozen.**

QUEEN WILHELMINA—Beautiful soft pink; a most charming variety. **10 cents each; \$1.00 doz.**

QUEEN OF THE WHITES—Pure white, extra fine. **10 cents each; \$1.00 dozen.**

RUFFLED GLORY (Or Kunderdi Glory)—Each petal is exquisitely ruffled or fluted. Beautiful creamy-apricot with delicate tint of pink and

fine markings of bright red on lower petals. It has received many certificates and awards. We give this first place. **10 cents each; \$1.00 dozen.**

SCHWABEN—This is the strongest growing and largest flower of all the yellow Gladioli. A clear citron-yellow with Aster-purple tongue on lower petals. Buds sulphur-yellow. The name "Schwaben" was given this because the airship of that name passed over Paris the day the certificate of merit was awarded it. **12 cents each; \$1.25 dozen.**

TACONIC—Bright lively pink, flecked and striped with shades of the same color; very beautiful. **10 cents each; \$1.00 dozen.**

WAR—Deep blood-red, shaded crimson black; very tall and conspicuous. This is probably the best Gladiolus of this beautiful shade of red. Try it. **15 cents each; \$1.50 dozen.**

WHITE EXCELSIOR—A very fine large-flowered white of the "America" type; clear throat; many flowers open at one time. **8c each; 80c dozen.**

WILLY WIGMAN—Large wide open flower, bloom of a beautiful blush tint with long bright red Tulip blotch on lower petal; one of the most attractive Gladiolus on the market; spike of very graceful habit and the effect of the crimson on the cream petal is most pleasing. **7 cents each; 65 cents dozen.**

OUR GLADIOLUS MIXTURE

Our Gladiolus mixture is unsurpassed, combining every conceivable color in this fine flower. Do not fail to try this mixture, it will not disappoint you. **4 cents each; 40 cents per dozen; \$3.00 per hundred.**

AMARYLLIS FORMOSISSIMA—Flowers are rich, dark scarlet. **25 cents.**

AMARYLLIS EQUESTRE (The Eagle Lily)—Color deep brick-red; extra fine. **25 cents.**

AMARYLLIS JOHNSONII—Dark red with a delicate white feather in each petal. **50 cents.**

CYCLAMEN PERSICUM, or Persian Violet—Fine for house culture; blooming in the winter. **15 cts.**

GLOXINIAS—Our strain is the best on the market. Start the bulbs at the beginning of summer in a warm place. All colors. **10c each; three for 25c.**

LILY, Milk and Wine—Flowers three to four inches in diameter. Striped white and carmine. **25 cts.**

FAIRY LILY—Bears a great profusion of delicate pink flowers; very free bloomer and easy to grow; it is a wonder. Try a few bulbs in a pan and you will never be without them. **10c each; three for 25c.**

THE WHITE JAPANESE SPIDER LILY—The florets are disposed in rays and resemble an immense spider. Of large size, pure white and deliciously fragrant. **blooming bulbs, 25 cents.**

MONTBRETIAS

Small bulbs that produce Gladioli-like flowers in the greatest profusion. The bloom and bloom spike resemble a Gladiolus, but the displays are entirely

different, opening up an entirely new field in colors. They are used abroad by the hundreds of millions. They are cheap, try them. Everybody can grow them. **The six Montbretias for 15c; per hundred, \$2.00.**

ETOILE DE FEU (Star of Fire)—Vermilion and scarlet.

FIRE KING—Bright scarlet; elegant; distinct.

GERBE D'OR (Golden Sheaf)—Golden-yellow; extra.

METEOR—Rich crimson; very striking.

ROSEA—A clear rose, yellow throat.

TRANSCENDENT—Dark orange, golden throat; superb.

TIGRIDIAS (Tiger, or Shell Flower.)

These gorgeous summer-flowering bulbs look well associated with Gladioli, Lilies and kindred stock; grow about one and one-half feet high, and flower freely throughout the summer. They require the same treatment as Gladioli, and should be lifted in autumn and dried off in the same way.

CONCHIFLORA—Golden-yellow, spotted crimson.

PAVONIA GRANDIFLORA—Bright crimson, center spotted with yellow.

ROSEA—Rose-pink, with yellow variegated center. **6 cents each; the three Tigridias for 15 cents.**

HARDY VINES AND CLIMBERS

Large Flowering Clematis

JACKMANII—This is perhaps the best known of the fine perpetual Clematis, and should have credit for the great popularity now attending this family of beautiful climbers; free in growth, abundant bloomer, producing flowers until frozen up. Flowers large, of an intense violet-purple; remarkable for their velvety richness. **50 cents.**

BANGHOLM BELLE—This is the finest of all white Clematis. Flowers large, of a beautiful creamy-white. **50 cents.**

DUCHESS OF EDINBURGH—This is, without doubt, the best of the double whites. Very free flowering; fragrant. **50 cents.**

VILLE DE LYON—The color is a bright rosy-red, entirely distinct from any other sort. A persistent bloomer and strong grower, with large flowers. **50 cents.**

GIpsy QUEEN—A unique shade of Clematis, a pretty lavender-pink, a fine contrast to the strong-colored sorts. Rapid in growth and slender, graceful habit. **50 cents.**

SIEBOLDI—A lovely shade of lavender; very beautiful and distinct. **50 cents.**

SPECIAL OFFER—The set of six distinct large-flowering Clematis for \$2.50; any three for \$1.35. This is a bargain, as the roots are large and strong. The best you have ever seen.

CLEMATIS PANICULATA—Covered in August and September with a sheet of clustered snow-white bloom of the most delicious fragrance. An arbor

or portico over which this Clematis is trained is a wall of white for the time being, and it blooms when nearly all other vines have ceased blooming. Perfectly hardy; grows rapidly. **Fine vines, 15 cents, two for 25 cents. Strong two-year field plants to bloom this year, 35 cents each.**

AMPELOPSIS VEITCHII (The Boston Ivy)—Clings firmly to any wall, building or tree. Green leaves in summer, changing to red in the fall. **10c each, 2-year-old plants, 25c; 3-year-old plants, 40c.**

CINNAMON VINE—Bears white flowers with fine cinnamon fragrance. **5 cents each; six for 25 cts.**

ENGLISH IVY—This climber is in great demand for covering walls. Plant in the least exposed situation. **15 cents; three for 35 cents.**

The Wonderful JAPANESE KUDZU VINE (Jack and Bean Stalk Vine)—This is the most rapid-growing vine that anyone knows of. By measurement it has been known to grow twenty feet in a week. The foliage is large and tropical. It is entirely hardy. Everyone has trouble in getting nursery-grown plants of this to grow. We have prepared and offer pot grown plants, the kind that have the crown to the plant and ball of earth to the roots, and you try to stop them growing and see if you don't run into a snag. This is proving a great forage plant in the south. All kinds of stock prefer it to hay or other coarse feed. Try it. **20 cents each; three for 50 cents.**

DUTCHMAN'S PIPE (Aristolochia Siphon)—A very rapid-growing hardy climber. The flowers are long and shaped like an old Dutch pipe. **50 cents.**

HARDY VINES AND CLIMBERS—Concluded.

Honeysuckles

AUREA RETICULATA (Golden Leaved)—A variety with beautiful variegated foliage of yellow, white and pink. **10 cents.**

CHINESE EVERGREEN—Sweet-scented. Blooms nearly all the season; deliciously fragrant; flowers buff, yellow and white. **10 cents.**

HALL'S JAPAN—Sweet-scented. This is the most consistent bloomer of the class, being literally covered all summer with beautiful yellow and white flowers; very fragrant. **10 cents.**

SCARLET TRUMPET, or RED CORAL—A rapid grower, bright red with trumpet-shaped flowers. This is the old, well-known variety. **15 cents.**

YELLOW TRUMPET—Golden, trumpet-shaped flowers; fragrant. **15 cents.**

The set of Five Honeysuckles for 50 cents.

CHINESE MATRIMONY VINE—Pale purple flowers, followed by scarlet berries. A rapid and desirable climber. **10 cents.**
CHINESE WISTARIA—Desirable for porches, trellises, etc., and when in full bloom is truly magnificent. It flowers in early spring, in long, drooping racemes, resembling in size and shape a bunch of grapes. **15 cents; large plants, 40 cents.**

Lathyrus (Hardy Everlasting Pea.)

One of the best and most desirable flowering hardy climbing plants, attractive both in flower and foliage, growing to a height of eight to ten feet, and producing clusters of large flowers the entire summer; fine for cutting, lasting well. **15 cents each; the two for 25 cents.**

LATIFOLIUS RUBRA—Deep rosy-red.

LATIFOLIUS ALBA—Pure white.

HARDY BORDER PLANTS AND BULBS

Artemisia Lactiflora

This comparatively new introduction from China is a most effective flowering plant, with erect stems three and one-half to four and one-half feet high, clothed with elegantly cut dark green foliage and terminated by panicles of Hawthorne scented, creamy-white Spirea-like light and graceful flowers. It is at its best from the latter part of August to the end of September, and is particularly valuable on this account, being unlike any other plant in bloom at that time. **25 cents each.**

Daisies, Burbank's Shasta

The Shasta Daisy is one of the most marvelous productions in the flower line that has ever been brought to the notice of floriculturists. It is the first of a new type which has been obtained by hybridization and rigid selection through a series of years. Its first qualification is extreme hardiness. Second, it is perennial, blooming better and more abundantly each season. Third, it is not particular as to soil. Fourth, it blooms for several months. Fifth, the flowers are extremely large and graceful, averaging about four inches in diameter, with petals of the purest glistening whiteness, which are borne on single, long, stiff, wiry stems. Sixth, the blooms when cut remain perfectly fresh and in good condition for two weeks or more. No other flower can compare with it in usefulness.

We have two kinds of Shasta Daisies, **KING EDWARD** and **ALASKA**—15 cents each; the two for 25 cents.

Hardy Begonia, Evansiana

Think of it! a Hardy Begonia, one that stood twenty degrees below zero last winter, and came up and bloomed all summer. Another thing in its favor, it requires shade to grow in, at least partial shade. So many persons write us asking for plants suitable for shady places. Well, Begonia Evansiana will fill the bill. It is a wonderful, beautiful Begonia, having pendulous flowers in large racemes almost covering the entire plant. Color a sparkling pink that is simply entrancing. Everybody will want a hardy Begonia. It is also fine for pot culture. **Price for plant or bulbs, to bloom this summer, 25 cents; three for 60 cents.**

Delphinium or Larkspur

Indispensable to the herbaceous garden, their long, showy spikes of flowers persist from June till frost and furnish the most satisfactory blues to any color scheme.

AMOS PERRY—Rich rosy-mauve, flushed sky-blue, dark eye. **40 cents.**

ANDREW CARNEGIE—Enormous flowers, double soft lilac with blue center; extra. **50 cents.**

BELLA DONNA—Pure sky-blue; white bee; fine for cutting. **30 cents.**

CAPRI—Delicate lavender-blue, pure mauve center, inside of petals shaded pink; very attractive. **60c.**

FORMOSUM—A lovely celestial blue. **20 cents.**

KING OF DELPHINIUMS—One of the finest Delphiniums, with flowers of enormous size. Dark gentian-blue with royal purple center; white bee; extra. **75 cents.**

LAMARTINE—A glorious plant for the border. Deep Prussian-blue shaded indigo-blue. Extra. **35 cents.**

LIZE VAN VEEN—Pure Cambridge-blue, shaded with porcelain-blue; white bee. **40 cents.**

LORENZO DE MEDICI—Double pink flowers, suffused with porcelain-blue; extra handsome. **\$1.00 each.**

MADAME VIOLET GESLIN—Very bright blue, light mauve center. **50c.**

MRS. CREIGHTON—Deep Cornflower-blue with glistening dark plum center; brown bee. **40c.**

MRS. J. S. BRUNTON—Flowers of the finest porcelain-blue, produced in immense quantities on long graceful spikes. **40 cents.**

MOERHEIM—Pure snow-white. Elegant. **50 cents.**

PERSIMMON—Sky-blue, light canary-yellow center; sulphur bee. Elegant. **50 cents.**

QUEEN WILHELMINA—Soft lavender-blue, flushed with rose. White bee. Very conspicuous. **35 cents.**

QUEEN OF THE LILACS—Rich lilac with white eye, giving it a very striking appearance. **60 cents.**

REV. E. LASCELLES—One of the finest Larkspurs with bold spike and large double flowers, with white and blue center. Award of merit. **75c.**

SPECIAL OFFER—The Seventeen Grand Varieties of Delphiniums, embracing a wide range in colors, costing \$7.50, sent for only \$6.50.

IRIS—The Rainbow Flower

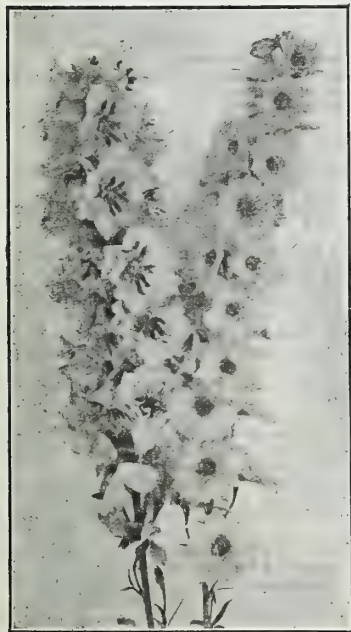
The Iris are fast coming into favor. They are entirely hardy and increase rapidly when planted in a flower garden. By planting the different families of Iris you will have bloom from the tenth of May till the middle of July. To get the best results Iris are planted in the fall, although they can be planted any time in the spring of the year.

Iris Kaempferi—Japanese Iris

The improved forms of this beautiful, perfectly hardy flower, producing a dozen flower spikes, each spike bearing from two to four enormous blossoms 8 to 10 inches across, are not outrivalled by any flower in existence. They are of the most delicate and beautiful colors, markings and combinations. We offer two choice varieties, **20 cents each; the two for 35 cents.**

GEKKI-NO-NAMI (Moonlight on Waves)—Large double white, center gold and yellow. Some sell this under name of Gold Bound. Six petals.

HANA-AOI—Silvery gray, heavily veined and marked with dark blue, shaded lilac. Six petals.



King of Delphiniums.

HARDY BORDER PLANTS AND BULBS—Continued.

Iris Germanica—German Iris The "Fleur de Lis" of France

No other flower has so many combinations of color, especially of the delicate and unusual shades, and the name Rainbow Flower is most fitting. They are absolutely hardy, as beautiful in form, texture and coloring as any Orchid, and many are delightfully fragrant. They are not particular as to soil, will grow where anything will, but do better in well-drained locations. There is nothing prettier than this German Iris, blooming from May 10th to June 10th. The colors are gorgeous and they completely hide the plant. **The entire nine, costing \$2.20, for \$1.65.**

FLORENTINA ALBA—Creamy-white, faintly flushed lavender; fragrant and early. This is the Orris root of commerce, being used for the manufacture of toilet powder. The roots are delicately perfumed. **15 cents.**

HONORABLE (Sans Souci)—Standards golden-yellow, falls rich mahogany-brown; very effective. **15 cents.**

INNOCENZA—Standards and falls ivory-white; crest rich golden-yellow; a very delicate and showy flower. **25 cents each.**

MADAME CHEREAU—Standard and falls white, elegantly frilled with a wide border of clear blue; very beautiful. **15 cents.**

MRS. NEUBRONNER—Very deep golden-yellow. Extra. **35 cents.**

MAORI KING—Standards rich golden-yellow; falls velvety crimson margined gold. Very brilliant. **50 cents.**

PALLIDA DALMATICA, or Heavenly Blue—Standard delicate lavender; falls clear deep lavender; flowers very large and extra fine. **25 cents.**

PURPLE PRINCE—Standard intense deep violet-blue; falls velvety dark purple; exceedingly rich and striking. **15 cents.**

QUEEN OF MAY—A lovely shade of rosy-pink, tinted with lilac; beautiful. **25 cents.**

HARDY LILIES

LILIUM AURATUM (Golden-Rayed Queen of Lilies)—This is the grandest Lily grown, and a never-failing delight. The perfume is exquisite—light, yet penetrating. Also known as the "Gold Banded Lily from Japan." **30 cents.**

CANDIDUM (The Ascension Lily)—The well-known hardy garden Lily. Snow-white, fragrant blossoms. One of the best. **20 cents.**

GIGANTEUM (The Bermuda or Easter Lily)—Pot and treat the same as for Hyacinths. Each bulb will give from six to twelve flowers, in many cases many more. The flowers are fully six inches in length, of the purest white and of the most delicious fragrance. **Fine bulbs, 25 cents.**

LANCIFOLIUM RUBRUM—A beautiful bright rose spotted with a dark velvety crimson. **25 cents.**

LANCIFOLIUM ALBUM—Very fragrant; large flowers; a pure white, with a green band running through the center of each petal; one of the best. **25 cents.**

TIGRINUM FLORE PLENO (The Double Tiger Lily)—Bright orange, spotted black and very double. **25 cents.**

TIGRINUM SIMPLEX (The Single Tiger Lily)—This is a great favorite. There is no better Lily grown. **20 cents.**

SPECIAL OFFER No. 39—This set of seven lovely Hardy Lilies, all distinct, costing \$1.65, sent for only \$1.35.



Iris Honorable.

Lily of the Valley

The Lily of the Valley is one of those delicate, sweet little flowers that not only easily wins our love, but keeps it forever. Put four or five or a half dozen pips or bulbs in a pot, and in about four or five weeks they will flower. In the spring transfer them to the garden. **Fine pips, 5c; 40c dozen.**

ACHILLEA, BALL OF SNOW—Pure white flowers in immense clusters; fine for cemetery planting. **10 cents each; three for 25 cents.**

AQUILEGIA, or Columbine—All colors. **10 cents.**

CAMPANULA, or Canterbury Bells—Three colors. **15 cents each; the two for 25 cents.**

COREOPSIS LANCEOLATA GRANDIFLORA—Golden-yellow, invaluable for cutting. **10 cents; three for 25 cents.**

DICENTRA SPECTABILIS, or Bleeding Heart—**20 cents each; three for 50 cents.**

DIGITALIS (Foxglove)—Gloxinia-like flowers; four separate colors. **10 cents; four for 35 cents.**

EULALIA JAPONICA ZEBRINA (Hardy Grass)—Striped across the leaves; fine plume. **15 cents.**

EULALIA JAPONICA VARIEGATA (Hardy Grass)—Striped white and green; bears elegant plumes. **15 cts.**

EULALIA GRACILIS UNIVITATA (Hardy Grass)—Makes immense clumps; very graceful. **15 cents.**

FORGET-ME-NOT (Myosotis Palustris)—Everybody's favorite. **10 cents.**

FUNKIA SUBCORDATA GRANDIFLORA (The White Plantain or Day Lily)—Pure white, lily-shaped fragrant flowers. **20 cents.**

FUNKIA MEDIO VARIEGATA—Green and white foliage with lavender flowers. **20 cents.**

GAILLARDIA GRANDIFLORA (Blanket Flower)—Center dark red-brown, petals marked with rings of brilliant crimson-orange and vermilion. **10c; three for 25c.**

HOLLYHOCKS, MAMMOTH DOUBLE FLOWERING—We offer four colors. Will bloom the first year. **20 cents; four for 60 cents.**

HEMEROCALLIS FLAVA (The Lemon Lily)—This is entirely hardy, and bears flowers of a lemon-yellow color. Very desirable. **15 cents.**

HIBISCUS CRIMSON EYE—Belongs to the family of Malvows; flowers six inches across; color pure white with pronounced eye of deep crimson. **10 cents.**

HIBISCUS MEEHAN'S MALLOWS—We have two colors, Pink and Red, of this handsome hardy perennial, bearing large extremely showy flowers. **20 cents each; the two colors for 30 cents.**

HYACINTHUS CANDICANS—Large spikes of pure white. The hardy Hyacinth. **6 cents; five for 25 cents.**

LOBELIA CARDINALIS (Cardinal Flower)—Rich fiery cardinal flowers; strong plants, often producing ten to eighteen spikes, twelve to twenty-four inches long. **15 cents.**



Lilium Auratum (Gold Banded Lily).

HARDY BORDER PLANTS AND BULBS—Concluded.

PLUMBAGO LARPENTAE, or *Lady Larpent*—Deep royal blue flowers. This is an elegant plant. **10 cts.**
HARDY SCOTCH, or **SWEET MAY PINKS**—These are the pinks of our mothers' gardens; all colors. **10 cents; three distinct colors for 25 cents.**
NEW HARDY SCOTCH PINK, "**HER MAJESTY**"—Pure white flowers; fine for cemetery. **10 cents; three for 25 cents.**
PLATYCODON GRANDIFLORUM (*Bush Clematis*)—A free-flowering plant covered with flowers that resemble somewhat the Clematis; two colors, deep blue and pure white. **10 cents each; the two for 15 cents.**
PYRETHRUM—Handsome garden flowers, like huge daisies. **15 cents.**
RUDBECKIA LACINIATA (*Golden Glow*)—Grows six to eight feet high, bearing hundreds of double yellow blossoms; it is very desirable. **10 cents; three for 25 cents.**
RUDBECKIA PURPUREA—The great purple cone flower. **25 cents.**
SAGE, **HOLT'S MAMMOTH**—A variety of unusual substance, strong flavor and superior quality. **10 cents; three for 25 cents.**

STOKESIA CYANEA, or **CORNFLOWER ASTER**—Grows eighteen to twenty-four inches high. Two kinds of flowers, of lavender-blue and pure white, four to five inches in diameter, borne from June to October. **15 cents; two for 25 cents.**
HARDY BLUE SALVIA (*Caryopteris Mastacanthus*)—A grand plant bearing rich lavender-blue flowers. Be sure and try this plant. It will please you. **10 cents.**
SWEET WILLIAM—A Fine Collection of all Colors—White, scarlet, maroon, pink, red on white ground, violet on white ground, Holborn Glory or Auricula-flowered. **10 cents; three for 25 cents; seven for 50 cents.**
VALERIANA—Garden Heliotrope. Entirely hardy, very showy plant; lavender flowers; very fragrant. **15 cents.**
VIOLET, **HARDY DOUBLE ENGLISH**—A perfectly hardy double Violet; a beautiful blue color. **20 cents; three for 50 cents.**
YUCCA FILAMENTOSA (*Spanish Dagger*)—Blooms every year, bearing long stalks surmounted with large umbels or heads of white flowers. **10 cents.**

HARDY DECIDUOUS SHRUBS

The Ever-Blooming Butterfly Bush

(*Buddleia Variabilis Magnifica*)

It was a matter of some thought before this highly desirable plant was finally christened with the common English name by which it goes. Several years ago there were imported from Europe some plant novelties and this one was among them. We observed it carefully for a season and were charmed with its beauty, ease of culture and free flowering habit. The name Butterfly Bush was applied to it because it seems to attract butterflies in large numbers. Particularly we notice that it is not alone the common little yellow species of butterfly, but also the large and gorgeously colored butterflies that swarm about it as though vieing with it in brilliancy of color. This shrub from a young plant set out either in the spring or fall, will mature to full size the first summer, producing a handsome bush, which the first year often maintains a height of four feet. It produces long, graceful stems, which terminate in tapering panicles of beautiful lilac-colored flowers that are of miniature size and borne by the hundreds on a flower head which is frequently ten inches long. A single plant the first season will throw out as many as fifty flower spikes, which increase greatly in number during succeeding years. The year after planting, it generally commences to flower in June and continuing each season until severe frosts nip it. The foliage and blooms are exceedingly fine. The shrub is rather semi-herbaceous, by which we mean in some latitudes it will die down to the ground and while perfectly hardy, we recommend covering the roots with manure, leaves or other suitable materials as winter approaches, as this will produce a heavy growth the following season. This shrub is very desirable as an individual specimen in the lawn and garden, or placed promiscuously in the shrubbery border. **Fine plants, 20 cents; three for 50 cents.**



Buddleia Variabilis Magnifica (Butterfly Bush)

Deutzias

Their fine habit, luxuriant foliage and profusion of bloom render them among the most beautiful of shrubs. They flower the latter part of June.

DEUTZIA CRENATA (FL. PL.)—Flowers double white, tinged with rose. **15 cents; two-year plants, 40 cents.**

DEUTZIA GRACILIS—Dwarf habit. Covers itself with pure white bell-shaped flowers. **15 cents each; strong plants, 40 cents.**

DEUTZIA GRACILIS ROSEA—Same as above, but pink flowers. **15 cents each; strong plants, 40 cents.**

DEUTZIA LEMOINEI—Habit dwarf and free flowering; double white flowers. **15 cents each; two-year plants, 40 cents each.**

DEUTZIA PRIDE OF ROCHESTER—Large double white flowers. **15 cents; two-year plants, 40 cents.**

SPECIAL OFFER No. 51—Five Deutzias for **65 cents.**

AZALEA MOLLIS—The most brilliant and showy of all hardy shrubs, exceeding even the Rhododendron, and entirely hardy without protection in all situations. The bloom, which varies in color from the intense rosy-crimson to lemon-yellow, literally covers the compact, spreading plant, forming a huge bouquet, and which remains in perfection for a long time in May and June. Massed they produce an effect that is actually brilliant and dazzling. These plants ready to bloom. **50 cents.**

BUXUS (*Ornamental Box*)—*Sempervirens*—Useful for edging and bordering walks, etc. A handsome shrub with deep green foliage. This is not as dwarf as the *Sempervirens Nana*, but we find it so much more vigorous and hardy that we advise planting this and trimming to height required. **5 cents each; 50 cents per dozen, postpaid. By express, purchaser to pay expressage, \$3.00 per hundred.**

CALYCANTHUS FLORIDUS (*Carolina Allspice* or *Sweet Scented Shrub*)—A most desirable shrub. The wood is fragrant; flowers of a rare chocolate color, having a peculiar agreeable odor that is very penetrating. They blossom in June and at intervals afterwards. **Fine plants, 15 cents; strong two-year-old plants, 35 cents.**

CYDONIA JAPONICA (*Japan Quince*)—Has bright scarlet flowers in great profusion in early spring; one of the best shrubs. **Fine plants, 25 cents.**

FORSYTHIA VIRIDISSIMA—A fine hardy shrub, leaves and bark deep green; flowers golden-yellow. Blooms earliest of all shrubs before the foliage comes. **20 cents; two-year size, 40 cents.**

HARDY DECIDUOUS SHRUBS—Continued.

Hibiscus Syriacus (Althea or Rose of Sharon)

Also known as the Hollyhock shrub, belongs to the Mallow family. These are the most beautiful shrubs we have in our collection. The flowers are of large size, very double and full of various brilliant and striking colors. They bloom freely during August and September, when scarcely any other shrub is in bloom. We offer nine of the very choicest varieties as follows:

ANEMONEFLORA—Largest of all Althea bloom; double wine-red.

BOULE DE FEU, or Ball of Fire—Double red.

COELESTE—Single sky-blue; extremely showy.

JEANNE D'ARC—Double snow-white.

MONSTROSA—Semi-double white; red center.

PAEONIFLORUS—Double pink.

RUBUS—Single red; a striking variety.

VIOLET CLARE—Double violet; very popular.

SNOWDRIFT (Totus Albus)—Single pure white.

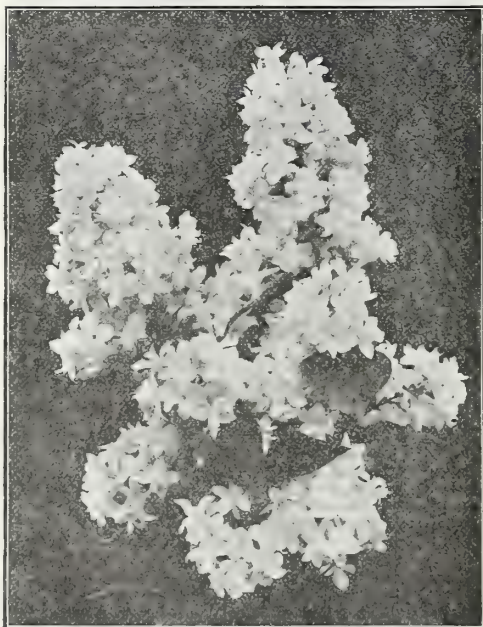
Fine plants, 15c each, the nine for \$1.10. In two-year plants, 25c each, the nine for \$2.00.

New Hydrangea "Hills of Snow"

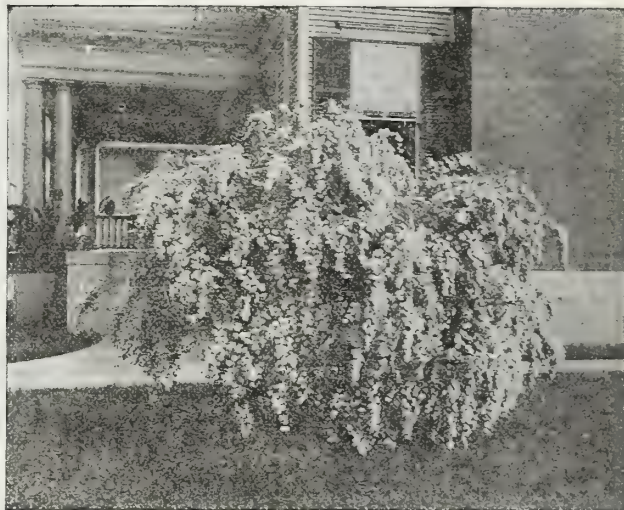
This is the great new hardy shrub that has come to gladden our yards and gardens. We place it first and foremost of all shrubs. It makes a perfectly round, symmetrical bush that is covered from June to August with handsome large pure white flowers. Be sure and plant this new hardy shrub, it will please you greatly. **Young plants, 15 cents each; strong two-year-old plants, 40 cents.**

Hydrangea Paniculata Grandiflora

A great favorite, and there is nothing finer or more showy, whether for planting in large masses in parks or for single plants on the smallest lawns. Blooms profusely from July until frost, in immense white panicles, tinted with pink and then with brown in the fully matured flower. The plant should be cut back each spring fully one-half of the past season's growth, as the flowers are much finer if the plant is treated in this manner. The flowers are much finer and larger if grown in a good, rich soil, but the plant is so hardy and so easily grown that success is almost certain in any kind of soil and in any situation. **Young plants, 15 cents. Strong flowering plants, for immediate effect, two years old, 40 cents.**



Lilac Madame Casimir Perier.
(See description page 39.)



"Bridal Wreath" Spirea.

Jasmine Primulinum

(New.) This is a grand new hardy Jasmine of bushy growth; star-shaped yellow flowers. Try this plant. **20 cents.**

Kerria Japonica (Corchorus)

A slender, green-branched shrub with globular, yellow flowers from July to October; fine plants. **25c.**

Lonicera Grandiflora

(Upright or Bush Honeysuckle)—A beautiful shrub, producing large, bright red flowers striped with white; blooms in June. **25 cents.**

Lonicera Tartarica

(Tartarian Honeysuckle)—This Honeysuckle also grows in a bush form, bearing beautiful pink flowers which contrast beautifully when planted with Grandiflora, blooming at the same time. **25 cents; the two Bush Honeysuckles for 40 cents.**

Rhus Cotinus (Purple Fringe or Smoke Tree)

A much admired shrub for its curious fringe or 'hair-like' flowers that cover the entire plant, giving it the appearance of being enveloped in smoke. **25 cents.**

Spirea (Meadow Sweet)

These are beautiful shrubs of the easiest culture. Their blooming extends over a period of three months. **One-year, 15 cents each; strong two-year-old plants, 35c each.**

ANTHONY WATERER—This beautiful gem makes a low, compact bush and is covered nearly the whole growing season with large umbels of deep crimson flowers which measure nearly a foot across. When scarcely three inches high it begins to bloom, and thereafter is seldom out of flower. As a pot plant or for growing in the open ground, nothing can equal it.

VAN HOUTTEI (Bridal Wreath)—Without doubt the very finest of all shrubs. With us in May and early June the plant is completely covered with a mass of large white flowers presenting a beautiful appearance. Named the "Bridal Wreath" on account of its long graceful sprays of pure white.

Syringa or Philadelphus (Mock Orange.)

These are invaluable shrubs, blooming in June. **CORONARIUS (Garland Syringa)**—Pure white flowers, highly scented. **20 cents; two-year plants, 35 cents.**

GRANDIFLORUS (Large-Flowered Syringa)—Has very showy large white flowers, delicate fragrance. **20 cents.**

MANTEAU D'HERMINE (Cape of Ermine)—Dwarf growth with long, slender branches densely covered from base to top with sweet-scented double flowers of creamy-white. In fact, the flowers are borne in such great profusion as to totally obscure the plant. **25 cents.**

MONT BLANC—The branches of this beautiful variety are covered with white flowers that are deliciously fragrant. A grand species. **25 cents.**

NOTE—The last two named Philadelphus are away ahead of the old varieties. Being dwarf, they are superb for hedge planting.

HARDY DECIDUOUS SHRUBS—Concluded.

Syringa or Lilac

Well known beautiful shrubs, indispensable in every collection. It is doubtful if anything in the whole range of flowering shrubs surpasses these in grace and elegance, or in hardiness and usefulness. As decorative plants on the lawn or in the border they are without a peer. All of the Lilacs are deliciously fragrant. **One-year plants of Lilacs, 12 to 18 inches high, 25c each; two-year plants, branched, 18 to 24 inches, 50c each; any nine Lilacs, in one-year-old plants, for \$1.75; in two-year-old plants, any nine for \$3.50.**

ALPHONSE LAVALLE—Double dark blue, shading to violet. Extra large panicles, beautiful.

CHARLES X—A strong, rapid growing variety with large, shining leaves, trusses large, rather loose; reddish-purple.

DR. STOCKHART—Single wine-red. Fine trusses.

JOSIKAE (Hungarian Lilac)—Fine, distinct species, dark, shining leaves and purple flowers in June after other Lilacs are done flowering. Extra fine.

MADAME CASIMIR PERIER—Very large, creamy-white; superb.

MADAME LEMOINE—A superb double flowering white variety; can't be beat.

MARIE LEGRAYE—Large panicles of single white flowers. The finest white Lilac.

MICHAEL BUCHNER—Very large, erect panicles of pale lilac; superb.

PERSICA, PERSIAN LILAC—A delicate purple of rare beauty; very fragrant, rare.

PRESIDENT GREVY—A beautiful blue. Individual flowers very double and very large. The panicle is magnificent; one of the finest Lilacs.

SOUVENIR DE LOUIS SPAETHE—Long panicles of large individual flowers, dark purplish-red; distinct. Superb.

VILLOSA—Color light pink, almost white; one of the latest to bloom; very showy.

VULGARIS (Common Lilac)—Bluish-purple flowers. A standard variety. Always good.

VULGARIS ALBA—Common white Lilac; very large trusses of cream-colored flowers. Extra.

Snowball—Viburnum

(*Viburnum Opulus Sterilis*)—(Guelder Rose)—A well known favorite shrub of large size, with globular clusters of pure white flowers. The Snowball of our mothers' gardens. Blooms in May. **One-year plants, 20 cents; two-year plants, 35 cents.**

Plicatum, Japanese Snowball

Handsome plicated leaves with globular heads of pure white flowers, early in June. No shrub is prettier. **35 cents.**

Weigelia—Diervilla

They produce in June and July superb large trumpet-shaped flowers that almost hide the plant. They are very desirable for the border or for grouping, and as specimens on the lawn. **One-year plants, 20 cents; strong two-year plants, 40 cents.**

CANDIDA—A vigorous, erect grower; flowers pure white and produced in great profusion in June, and the plants continue to bloom through the summer, even until autumn.

EVA RATHKE—A charming Weigelia flower, brilliant crimson. A beautiful distinct clear shade.

ROSEA—An elegant shrub with fine rose-colored flowers; erect compact growth. Blossoms in June.

ROSEA NANA VARIEGATA—Of dwarf habit and possessing clearly defined silvery variegated leaves. Flowers nearly white. It stands the sun well.

HEDGE PLANTS

We here name the most suitable plants for hedges.

Berberis—Barberry

(*Thunbergii*)—From Japan. A pretty species of dwarf habit. Small foliage changing to a beautiful coppery-red in autumn. A slower grower than the Privets, but needs no trimming and is a feast for the eye when full grown. **One-year plants, 20 cents each; \$2.00 per dozen; \$12.50 per hundred.**

Ligustrum—Privet

AMOR RIVER PRIVET (Amurensis)—This is a very graceful plant, requires little trimming. The leaf is small and rounded, plant branching, has not the stiff, formal effect that the California Privet has. This is the Amoor River Privet from

the north, and is hardy. **12 to 18 inches, 15 cents each; \$1.50 per dozen; \$10.00 per hundred.**

CALIFORNIA PRIVET OVALIFOLIUM—This makes when pruned a very formal hedge, will grow almost anywhere, thriving where other plants refuse to grow. **18 to 24 inches, 15 cents each; \$1.25 per dozen; \$8.00 per hundred.**

POLISH PRIVET (Ligustrum Polish)—This is a perfectly hardy Privet coming from Poland, Russia. Points of merit, vigorous, dense growth, dark rich foliage. Holds rich color to the end of the season. Tested and found hardy from Nova Scotia to British Columbia, from Saskatchewan to Mississippi. **20 cents each; \$2.00 per dozen; \$15.00 per hundred.**

CHOICE FLOWER SEEDS

Any Six Packets Priced at 5 Cents Sent for 25 Cents.

	Price per pkt.
Abrus Precatorius—West Indian Weather Plant.....	5c
Achillea, The Pearl—Hardy; pure white double flowers.....	10c
Ageratum—Imperial dark blue.....	5c
Ageratum—Imperial pure white.....	5c
Adlumia Cirrhosa—Allegheny Vine, or Mountain Fringe.....	5c
Agathea Celestis (Blue Daisy)—Hardy perennial.....	10c
Alyssum, Sweet—The old favorite; very fragrant.....	5c
Alyssum, Little Gem—New dwarf variety.....	5c
Ambrosia—Foliage and flowers very fragrant.....	5c
Anchusa Capensis—Cape Forget-Me-Not.....	5c
Antigonon leptopus, or Mountain Beauty.....	5c
Antirrhinum, Tall Mixed—Tall Snapdragons; all colors.....	5c
Antirrhinum, Dwarf Mixed—Dwarf Snapdragons; all colors.....	5c
Aquilegia, Double Mixed—All colors of Columbine.....	5c
Aquilegia, Single Mixed—All colors of Columbine.....	5c
Aristolochia Siphon—"Dutchman's Pipe," fine.....	10c
Arabis Alpina—Hardy white perennial.....	5c
Aster, Imperial Dwarf Mixture—All colors.....	10c
Aster, Dwarf Snowball—A pure white ball.....	10c
Aster, Dwarf Fireball—Brilliant scarlet.....	10c
Aster, Imperial Tall Mixture—All colors.....	10c
Aster, Hohenzollern Early Comet.....	10c
Aster, Giant Branching—Pure white.....	10c
Aster, Giant Branching—Clear pink.....	10c
Aster, Giant Branching—Darkest crimson.....	10c
Aster, Giant Branching—Light blue.....	10c
Aster, Giant Branching—Royal purple.....	10c
Aster, Giant Branching—Delicate lavender.....	10c

	Price per pkt.
Aster, Giant Peony-Flowered—All colors, mixed.....	10c
Aster, Giant Comet—All colors.....	10c
Aster, Yellow Queen—A fine sulphur-yellow color.....	10c
Aster, Queen of the Market—Earliest of all; five colors.....	10c
Aster, China or Common Mixed—In twenty colors.....	5c
Aster, Cocardeau or Crown Asters—All colors; mixed.....	10c
Arctotis Grandis—African Lilac Daisy.....	5c
Anemone (Wind Flower)—Hardy mixed colors.....	5c
Ampelopsis Veitchii—(Boston Ivy.) A hardy climber.....	5c
Balsam Apple—A rapid and pretty climber.....	5c
Balsam, Camellia-Flowered, Pink.....	5c
Balsam, Camellia-Flowered, Red.....	5c
Balsam, Camellia-Flowered, White.....	5c
Balsam, Camellia-Flowered—All colors, mixed.....	5c
Balsam, or Touch-Me-Not—Lady Slippers; all colors.....	5c
Bird of Paradise—Orange-red; flowers in clusters.....	5c
Calendula, or Pot Marigold, Mixed—All colors.....	5c
Ceropepis Grandiflora Lanceolata—Hardy yellow.....	5c
Campanula (Canterbury Bell)—Double mixed.....	5c
Campanula (Canterbury Bell)—Single Mixed.....	5c
Campanula, Cup and Saucer—Mixed.....	5c
Candytuft—Mixed colors.....	5c
Candytuft, Snow Queen—Pure white.....	5c
Candytuft, Giant Hyacinth-Flowered—Mixed.....	5c
Candytuft, New Dwarf Hybrid—Mixed colors.....	5c
Candytuft, Odorata, or Sweet-scented—Old favorite.....	5c
Cannas—The dwarf French ever-bloomers, mixed.....	10c
Carnations, King of the Scarlets—Glowing scarlet.....	25c

CHOICE FLOWER SEEDS—Concluded. Any Six Packets Priced at 5c Sent for 25c.

	Price per pkt.		Price per pkt.
Carnations, Giant Marguerite—Mixed colors.....	25c	Pansy, Striped and Mottled—Fine and exceedingly beautiful	5c
Carnations, Double Mixed—All colors.....	20c	Pansy, Violet Queen—White border, somewhat resembling	5c
Centaurea Imperialis—Mixed colors.....	5c	the fancy Geranium.....	5c
Centaurea Cyanus—Ragged Sailor, Cornflower, Blue Bottle,		Pansy, White Wings—White with black eye.....	5c
Bachelor's Button, mixed colors.....	5c	Pansy, Yellow Margined—A beautiful color, with margin or	5c
Centaurea Gymnocarpa—Dusty Miller.....	5c	belt of yellow.....	5c
Centaurea Candidissima—Dusty Miller.....	5c	Any six varieties of Pansies priced at 5 cents for	25c
Celostia Cristata, or Coxcomb—Glasgow prize dwarf variety	5c	Pansies, Extra Fine Mixed—All the preceding sixteen vari-	
Celostia Cristata, or Coxcomb—Tall mixed.....	5c	eties, mixed.....	10c
Celostia Cristata, or Coxcomb—Dwarf mixed.....	5c	Petunia, Grandiflora—The largest and best of all.....	15c
Centrosema Grandiflora (Butterfly Pea)—Hardy vine.....	10c	Petunia, Large-Flowered, Mixed.....	5c
Chrysanthemum Annual—Mixed colors.....	5c	Petunia, Howard Star—Velvety crimson, with star.....	10c
Chrysanthemum Annual, Morning Star—Yellow.....	5c	Perennial Phlox—Hardy; all colors; mixed.....	15c
Chrysanthemum Annual, Coronarium—Double white.....	5c	Phlox Grandiflora—Mixed large-flowering; all colors.....	5c
Cobea Scandens—Bell-shaped flowers; climbing.....	5c	Phlox Coccinea—Lovely scarlet Phlox.....	5c
Cosmos (Early Hybrids.) Mixed colors.....	5c	Phlox Cuspidata, or Star of Quedlinburg—Odd.....	5c
Cosmos, Giant Mixed—All colors.....	5c	Phlox Golden Harvest—Richest yellow.....	5c
Cypress Vine—Mixed seed; fine climber.....	5c	Phlox Snowdrift—Pure immaculate white.....	5c
Coleus—Finest mixed.....	10c	Phlox Pink Beauty—Large clear pink.....	5c
Cucumber, Wild—A rampant climber; fine for shade.....	5c	Phlox Nana Compacta—Dwarf; all colors.....	5c
Dahlias, Double Best Mixed—All colors.....	10c	Phlox Drummondii—Finest mixed.....	5c
Dahlias, New Century—All colors.....	10c	Poppy, the Shirley—New; very popular.....	5c
Dahlias, Cactus-Flowered—All colors.....	10c	Poppy, Snowdrift—Double; pure white.....	5c
Datura, or Horn of Plenty (Or Angel's Trumpet.) Mixed.....	5c	Poppy, Golden Gate—Lovely variegated colors.....	5c
Delphinium (Larkspur)—Annual mixed.....	5c	Poppy, Firedragon—Deep scarlet.....	5c
Delphinium (Larkspur)—Perennial mixed.....	5c	Poppy, Nudicaule, or Iceland Poppy—Yellow.....	5c
Dianthus, or Hardy Japanese Pink—All colors.....	5c	Poppy, Extra Fine Mixed—All colors.....	5c
Dictamnus Fraxinella (Gas Plant)—White flowers.....	5c	Poppy, Oriental—Hardy perennials; mammoth flowers.....	10c
Dolichos—Hyacinth Bean, or Scarlet Runner.....	5c	Portulaca (Rose Moss)—Double mixed; very bright.....	10c
Digitalis (Foxglove)—All colors, mixed.....	5c	Primula, or Chinese Primrose—Winter bloomer.....	15c
Double Daisy (Bellis Perennis)—Hardy; all colors.....	10c	Primula Obconica Grandiflora—Winter bloomer; mixed.....	10c
Daisy, Shasta—New, fine, large pure white.....	15c	Primula Forbesi (Baby Primrose)—Winter bloomer.....	15c
Eschscholtzia (California Poppy)—All colors, mixed.....	10c	Primula Veris Grandiflora (Cowslip)—Mixed colors.....	10c
Euphorbia Variegata, or Snow-on-the-Mountain.....	5c	Primula Vulgaris—The true yellow Primrose.....	5c
Forget-Me-Not, or Myosotis—Mixed colors.....	5c	Pink Picotee, or Hardy Pink—All colors.....	15c
Freesia—Pure white winter bloomer.....	5c	Pyrethrum (Feverfew)—Double white.....	5c
Gaillardia, or Blanket Flower—Mixed colors.....	5c	Ricinus (Castor Oil Plant)—Mixed.....	5c
Gourds, Ornamental—All kinds, mixed.....	5c	Rudbeckia Bicolor Superba—Hardy perennial; elegant.....	5c
Gypsophila (Angel's Breath)—Hardy; mixed colors.....	5c	Salpiglossis—All colors, mixed.....	5c
Godetia, or Satin Flower—Choicest varieties.....	5c	Schizanthus (Poor Man's Orchid)—Beautiful.....	5c
Helianthus, or Sunflower—Mammoth Russian.....	5c	Salvia Splendens (Scarlet Sage)—Deep scarlet.....	10c
Helianthus, or Sunflower—Globose Fistulosus.....	5c	Scabiosa, or Mourning Bride—All colors, mixed.....	5c
Helianthus, or Sunflower—Miniature.....	5c	Stokesia Cyanea (Cornflower Aster)—Hardy; elegant.....	15c
Hibiscus, Crimson Eye—Hardy; white, crimson eye.....	5c	Smilax—An elegant house vine.....	5c
Hibiscus Hybrida—Hardy; all colors mixed.....	5c	Stock, or Gillyflower—Dwarf German, all colors.....	10c
Hollyhocks, Mammoth Allegheny—Mixed colors.....	10c	Sweet William—Double giant-flowered; mixed.....	5c
Hollyhocks—Rainbow mixture of prize Hollyhocks.....	10c	Spencer Sweet Pea, Aurora—White and salmon.....	10c
Heliotrope—Very fragrant; all colors mixed.....	5c	Spencer Sweet Pea, Beatrice—White, pink and buff.....	10c
Ipomea, Heavenly Blue—The blue Moonflower.....	5c	Spencer Sweet Pea, Blue Jacket—A fine deep navy blue.....	10c
Ipomea Grandiflora Alba—The white Moonflower.....	5c	Spencer Sweet Pea, Countess Spencer—Soft rose-pink.....	10c
Kochia Scoparia—Summer Cypress; elegant bush.....	5c	Spencer Sweet Pea, Florence Nightingale—Lavender.....	10c
Kudzu Vine (Jack and the Bean Stalk)—Hardy vine.....	10c	Spencer Sweet Pea, Emily Eckford—Mauve.....	10c
Lathyrus, or Everlasting Pea—Hardy, very sweet, mixed.....	10c	Spencer Sweet Pea, King Edward—Scarlet.....	10c
Lavender—The old-fashioned Sweet Lavender.....	5c	Spencer Sweet Pea, Martha Washington—White, suffused	
Lobelia—The choicest mixed colors.....	5c	light rose.....	10c
Lantana, or Shrubby Verbena—All colors.....	5c	Spencer Sweet Pea, Mrs. Saukey—Pure white.....	10c
Lemon Verbena—Very fragrant; lemon-scented foliage.....	5c	Spencer Sweet Pea, Primrose Spencer—A creamy-yellow.....	10c
Marigold—Dwarf French mixed; all the good varieties.....	5c	Sweet Pea, Apple Blossom—Bright rosy-pink and red.....	5c
Marigold, Eldorado, or Dahlia-Flowered—Best of all.....	5c	Sweet Pea, Butterfly—White, edged lavender.....	5c
Mignonette, Giant Machet—Giant, fragrant flowers.....	5c	Sweet Pea, Blushing Beauty—A peach-blossom tint.....	5c
Mignonette Odorata, or Sweet Mignonette—All colors mixed	5c	Sweet Pea, Black Knight—Deep maroon.....	5c
Morning Glories (Convolvulus Major)—Common Morning		Sweet Pea, Blanche Ferry—Extra early pink and white.....	5c
Glory, mixed.....	5c	Sweet Pea, Captain of the Blues—Best blue to date.....	5c
Morning Glories, Japanese—All colors, mixed.....	10c	Sweet Pea, Coquette—Primrose-yellow, shaded lavender.....	5c
Morning Glories, Brazilian—Very remarkable; mixed.....	10c	Sweet Pea, Countess of Cadogan—Effect bright blue.....	5c
Mirabilis Jalapa, Marvel of Peru, or Four O'clock.....	5c	Sweet Pea, Dorothy Eckford—Grandest pure white.....	5c
Nasturtium, Dwarf Ladybird—Golden-yellow.....	5c	Sweet Pea, Dainty—White, with pink edges.....	5c
Nasturtium, Dwarf Chameleon—Crimson and bronze.....	5c	Sweet Pea, Firefly—Rich scarlet.....	5c
Nasturtium, Dwarf, Empress of India—Crimson-scarlet.....	5c	Sweet Pea, Gray Friar—Watered purple on white.....	5c
Nasturtium, Dwarf, Spotted King—Orange, spotted maroon		Sweet Pea, Hon. Mrs. Kenyon—Best yellow to date.....	5c
Nasturtium, Dwarf, Tom Thumb—All colors, mixed.....	5c	Sweet Pea, Janet Scott—The best pink; magnificent.....	5c
		Sweet Pea, Lady Grisel Hamilton—Best giant pink.....	5c
		Sweet Pea, Lottie Hutchins—Cream ground, flaked.....	5c
		Sweet Pea, Lovely—A beautiful shell-pink.....	5c
		Sweet Pea, Maid of Honor—White, edged with lavender.....	5c
		Sweet Pea, Majestic—Deep pink, wing deep rose.....	5c
		Sweet Pea, Mrs. Joseph Chamberlain—White striped rose.....	5c
		Sweet Pea, Prince of Wales—Brightest rose.....	5c
		Sweet Pea, Stella Morse—A true apricot shade.....	5c
		Sweet Pea, Salopian—The best dark red.....	5c
		Sweet Pea, White Wonder—Often 6 to 8 blooms on a stem.....	5c
		Sweet Pea, all of the above named sorts, per ounce.....	10c
		Sweet Pea, Best Mixture, per pkt., 5 cents; per ounce.....	10c
		Thunbergia (Black-Eyed Susan).....	5c
		Verbena, Odorata—Pure white.....	10c
		Verbena, Fine Mixed—All colors.....	5c
		Verbena, New Mammoth-Flowering—All colors.....	10c
		Violet, Mixed—All colors.....	10c
		Vinca Alba Madagascar (Periwinkle)—White.....	5c
		Vinca Rosea Madagascar (Periwinkle)—Rose.....	5c
		Wall Flower—Double mixed; all colors.....	5c
		Wild Flower Garden—Everything for a wild garden.....	5c
		Zinnia, Crested and Curled—All colors.....	5c
		Zinnia Elegans—Choicest double; all colors.....	5c
		Zinnia Plenissima—Double pink.....	10c
		Zinnia Plenissima—Double red.....	10c
		Zinnia Plenissima—Double rose.....	10c
		Zinnia Plenissima—Double white.....	10c
		Zinnia Plenissima—Double yellow.....	10c
		Zinnia Plenissima—Double; extra large.....	10c
		Zinnia, Tom Thumb—Dwarf, all colors.....	5c

GARDEN SET of GLADIOLUS

FOR DESCRIPTION AND PRICE
SEE FIRST PAGE

Pink
Beauty

America

Baron
Hulot

Mrs. Frances
King

Augusta

Annie
Wigman





ELLA V. BAINES'
Collection of
10 Giant Spencer
Sweet Peas

10 CTS. A PACKET OR THE
10 PACKETS FOR 75 CTS.